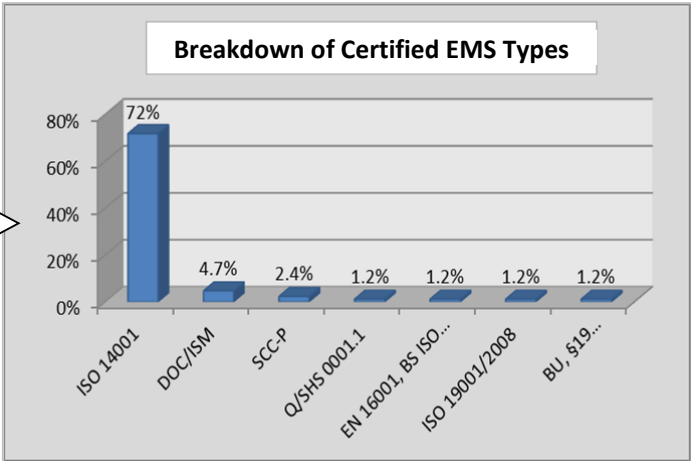
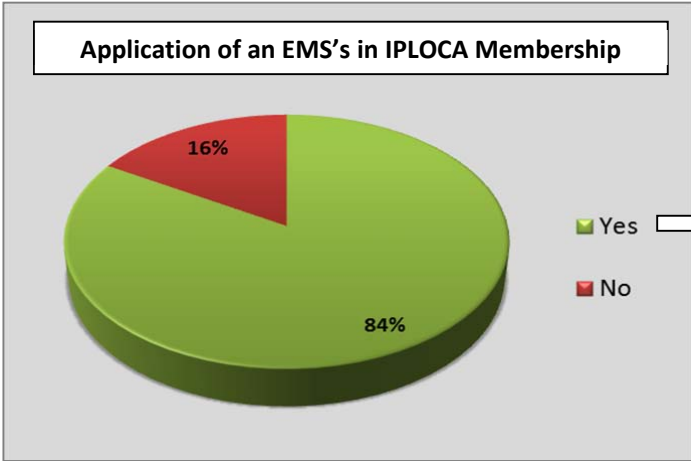




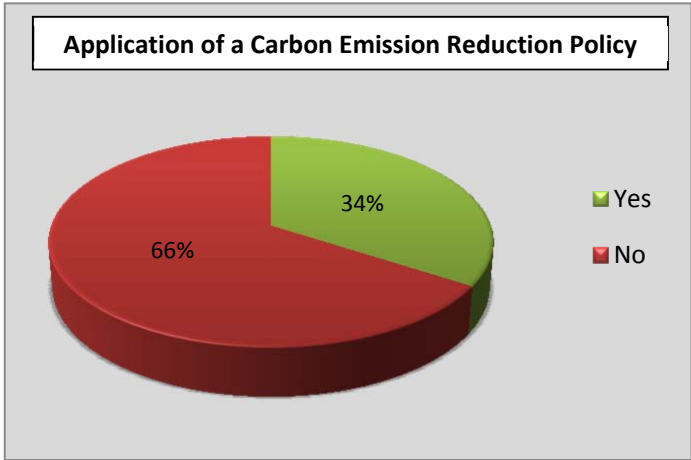
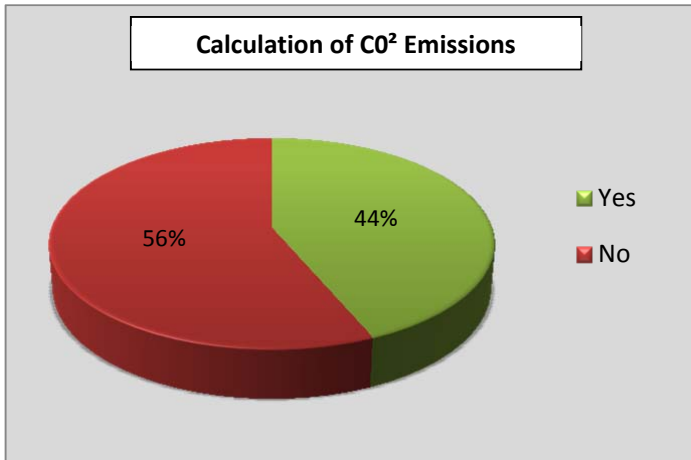
IPLOCA

**INTERNATIONAL PIPE LINE & OFFSHORE
CONTRACTORS ASSOCIATION**

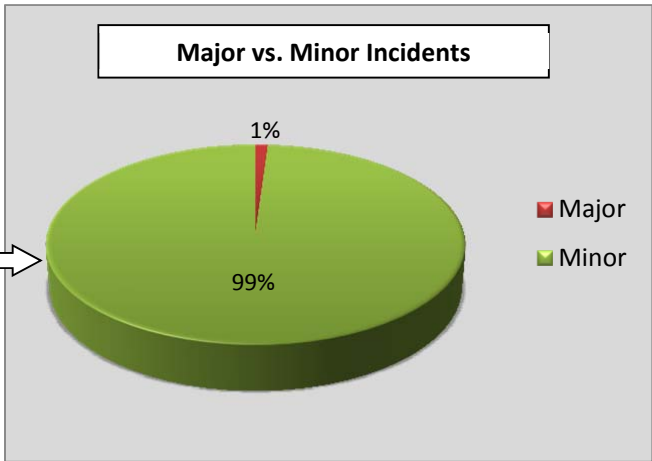
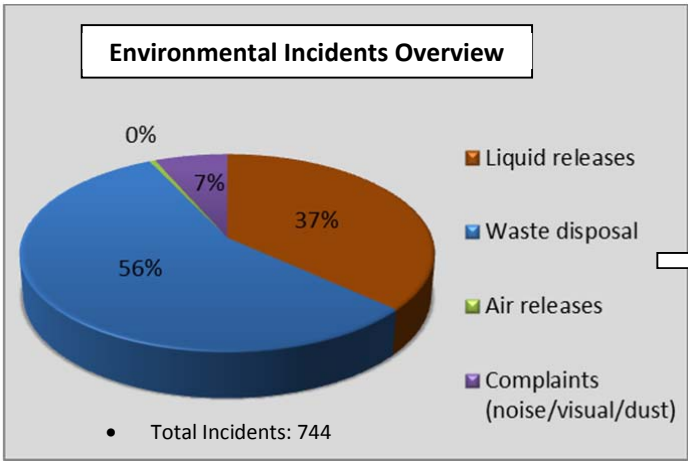
IPLOCA
Environmental Statistics Report
2011



A high adoption rate of EMS's exists within the ILOCA membership. The ISO14001 environmental management system certification has a 72% adoption rate; clearly a leading certification in the pipeline contractors industry



44% of the memberships choose to use CO² emissions as an indicator of their environmental performance, and 34% choose to apply a carbon emission reduction policy



Mitigation & Enhancement Methods

Below is an extract of various initiatives carried out by our members to mitigate, offset and enhance environmental incidents.

Waste Reduction	Air Releases
<p>Distribution of 100% recyclable aluminium bottles which can be refilled instead of using PET bottles</p> <p>Use of mulching process for timber cutting waste obtained during cleaning the ROW</p> <p>Waste management of drilling fluids (centrifugation / filter press...)</p> <p>Recovery of plastic materials and recovery of inert by crushing</p> <p>Capture and use of bio-gas produced by waste degradation for a bio-digestive slaughter house</p>	<p>Dust suppression by sprinkling of water</p> <p>Using soot particle filters and bio-diesel on machines</p> <p>Green-labelled cars, trucks have a Euro 5</p> <p>Dust suppression using STP-treated water</p> <p>Company equipment upgrades in order to reduce impact on environment (gas emissions)</p>
Habitat Preservation & Social Initiatives	Energy Efficiency
<p>Participation in the WWF Earth Hour</p> <p>Financing of different events connected to Bielik Eagle protection</p> <p>Installation of artificial supports to be used by storks for nesting in their habitat within the pipeline construction zone</p> <p>Spreading awareness of conservation of water and trees in print media as well as on bags distributed at work sites.</p> <p>Tree plantation at camp & site</p>	<p>Minimize electric power consumption by using frequency converter</p> <p>Installed various devices to regulate the driving speed to achieve a rational use of fuel</p> <p>Implementing an energy Management System according to ISO 16001 / BS ISO 5001</p> <p>Replacement the old asbestos roofing cover by a photovoltaic plant</p>
Management Initiatives	Liquid Releases
<p>Establishment of a Sustainability Task Force Committee.</p> <p>Hired 2 full time environmental coordinators</p> <p>Research and investment in alternative energy (bio-mass - photovoltaic - hydroelectric)</p> <p>Development and implementation of a manual on environmental protection</p> <p>All machinists received training on how to operate machines in an energy-saving and environmentally-friendly way</p>	<p>Initiatives toward minimization of generation of hazardous water</p> <p>Installation of filter systems for the cement unloading facility at Concrete Coating Plant</p> <p>Biodegradable materials in our dewatering systems (drains, tape, etc.).</p> <p>Multiple groundwater purifications systems & new groundwater infiltration system</p>



Chemin des Papillons 4
1216 Cointrin/Geneva
Switzerland
Tel. +41 22 306 02 30
Fax +41 22 306 02 39
www.iploca.com

Disclaimer

Whilst every effort has been made to ensure the accuracy of the information contained in this publication, neither IPLOCA nor any of its members past, present or future warrants its accuracy or will, regardless of its or their negligence, assume liability for any foreseeable or unforeseeable use made thereof, which liability is hereby excluded. Consequently, such use is at the recipient's own risk on the basis that any use by the recipient constitutes agreement to the terms of this disclaimer. The recipient is obliged to inform any subsequent recipient of such terms.