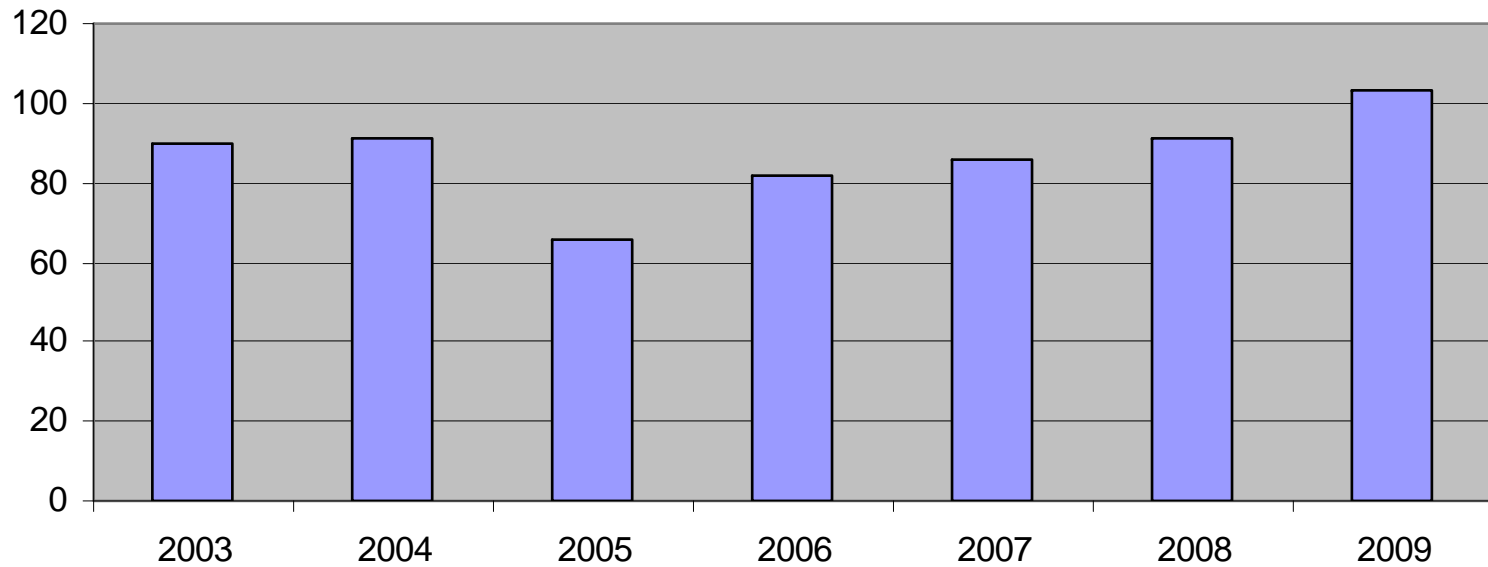




2009 Health & Safety Statistics

History of Statistics Returns

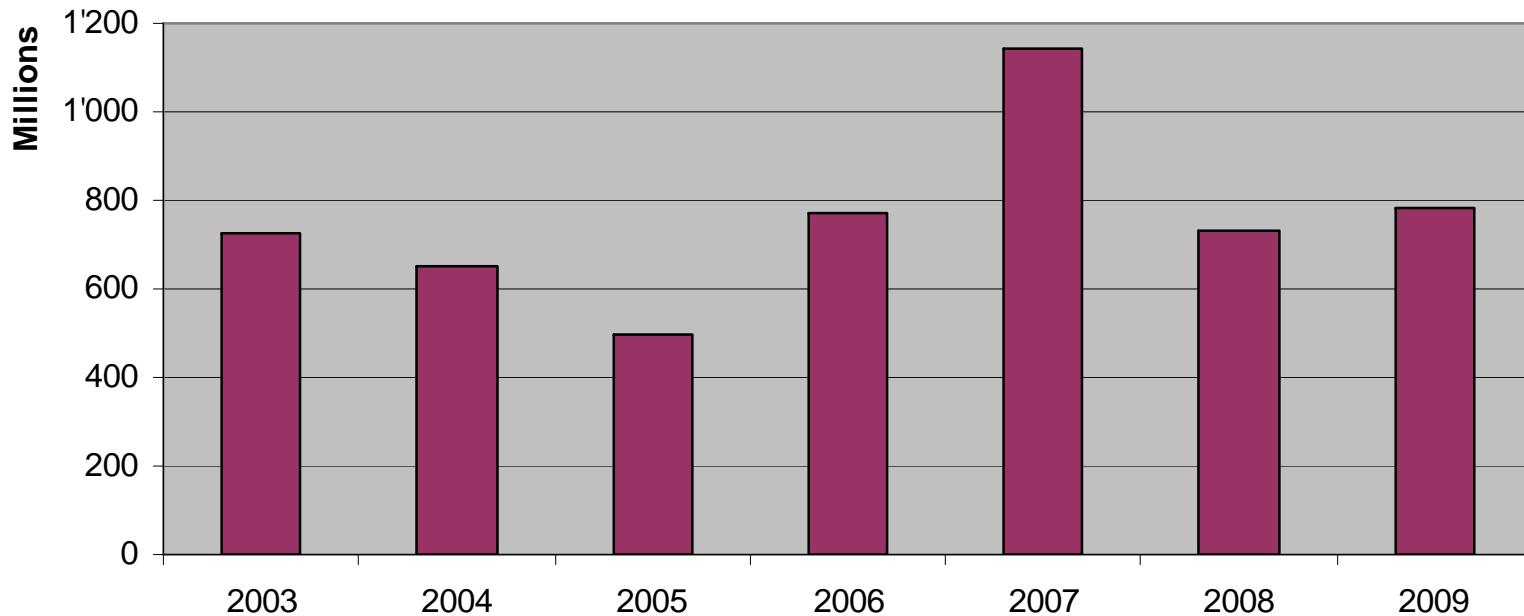


	2003	2004	2005	2006	2007	2008	2009
Submissions	90	91	66	82	86	91	103



2009 Health & Safety Statistics

History of Man Hours



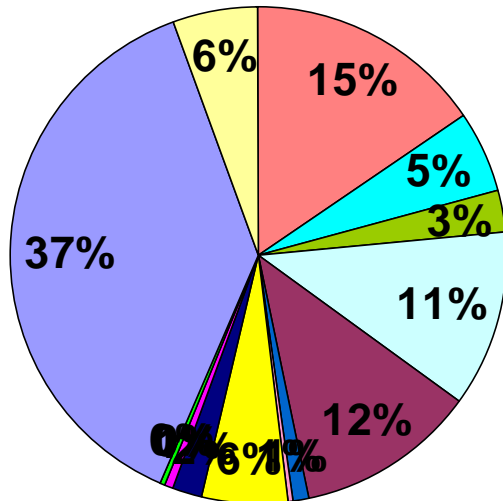
	2003	2004	2005	2006	2007	2008	2009
■ Man hours	724'382'240	650'132'559	499'169'602	773'954'572	1'141'168'919	731'262'014	783'347'961



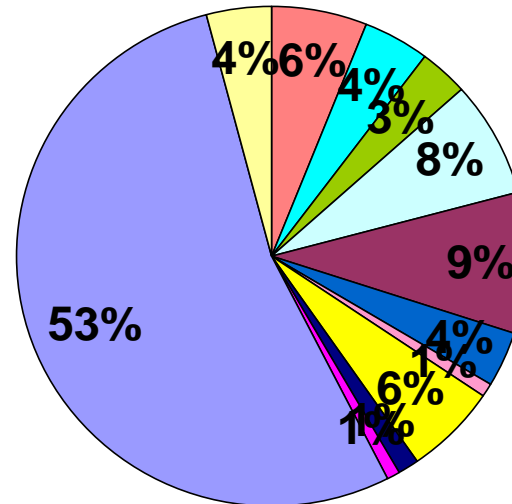
2009 Health & Safety Statistics

Accident breakdown

2008



2009

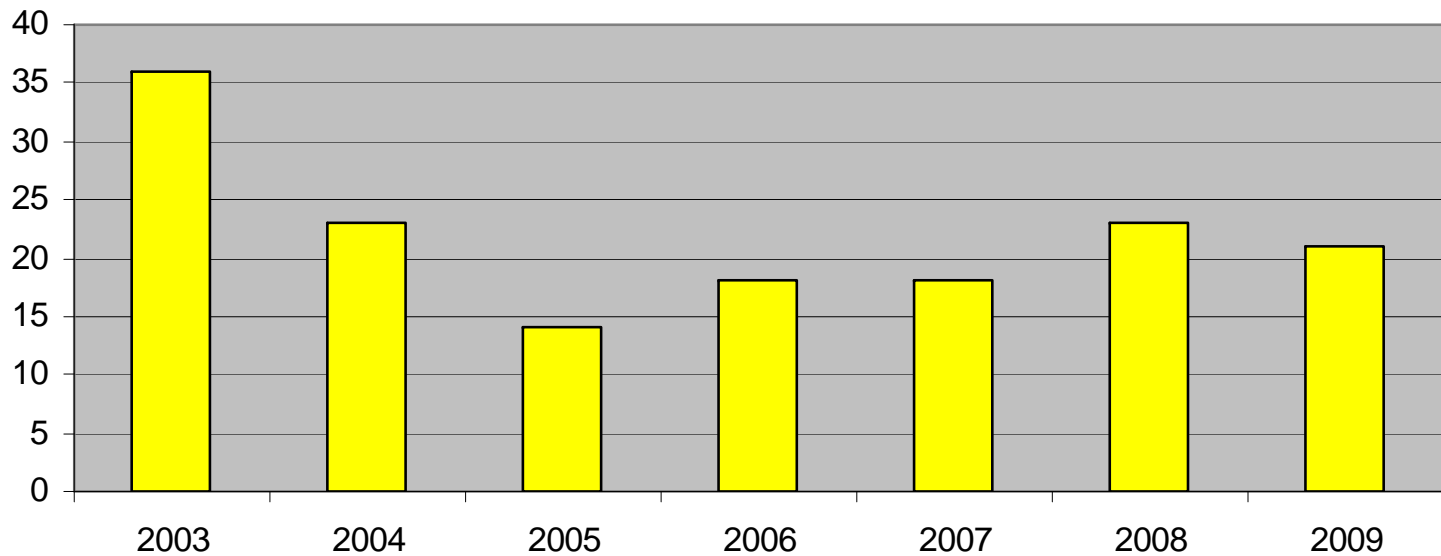


- Vehicle accidents
- Lifting Operations
- Work at height / scaffolding
- Hand tool
- Involving fall
- Excavation / Earth collapse
- Confined spaces
- Impact with construction equipment
- Welding operations
- Hazardous substances
- Road traffic accidents
- Others



2009 Health & Safety Statistics

History of fatalities

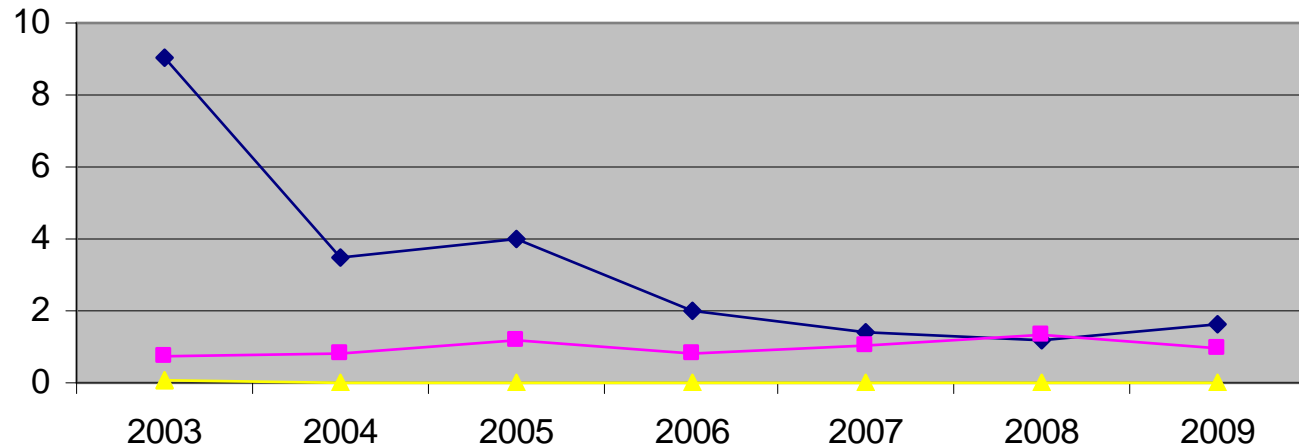


	2003	2004	2005	2006	2007	2008	2009
■ Fatalities	36	23	14	18	18	23	21



2009 Health & Safety Statistics

History of frequency rates



	2003	2004	2005	2006	2007	2008	2009
◆ LTI freq. rate*	9.039	3.456	3.980	2.004	1.398	1.175	1.598
■ RTA freq. rate **	0.768	0.829	1.176	0.780	1.041	1.339	0.931
▲ Fatality freq. rate	0.050	0.035	0.028	0.023	0.016	0.031	0.027

* LTI: Lost time injuries

** RTA: Road traffic accidents

Formula: LTI/RTA/FTL x 1,000,000 divided by total man-hours worked



2009 Health & Safety Statistics

Onshore > 1.5 Million M/Hrs/Year

- 57 Returns
- 32 Frequency Rate < 1
- 43 Reported 0 fatalities
- 610 Road traffic accidents
- 20 Fatalities



2009 Health & Safety Statistics

Onshore < 1.5 Million M/Hrs/Year

- 36 Returns
- 19 Frequency Rate < 1
- 36 Reported 0 fatalities
- 101 Road traffic accidents
- 0 Fatalities



2009 Health & Safety Statistics

Offshore

- 7 Returns
- 4 Frequency Rate < 1
- 6 Reported 0 fatalities
- 14 Road traffic accidents
- 1 Fatalities



2009 Health & Safety Statistics

Field Services & Special Contractors

- 4 Returns
- 4 Frequency Rate < 1
- 4 Reported 0 fatalities
- 4 Road traffic accidents
- 0 Fatalities