

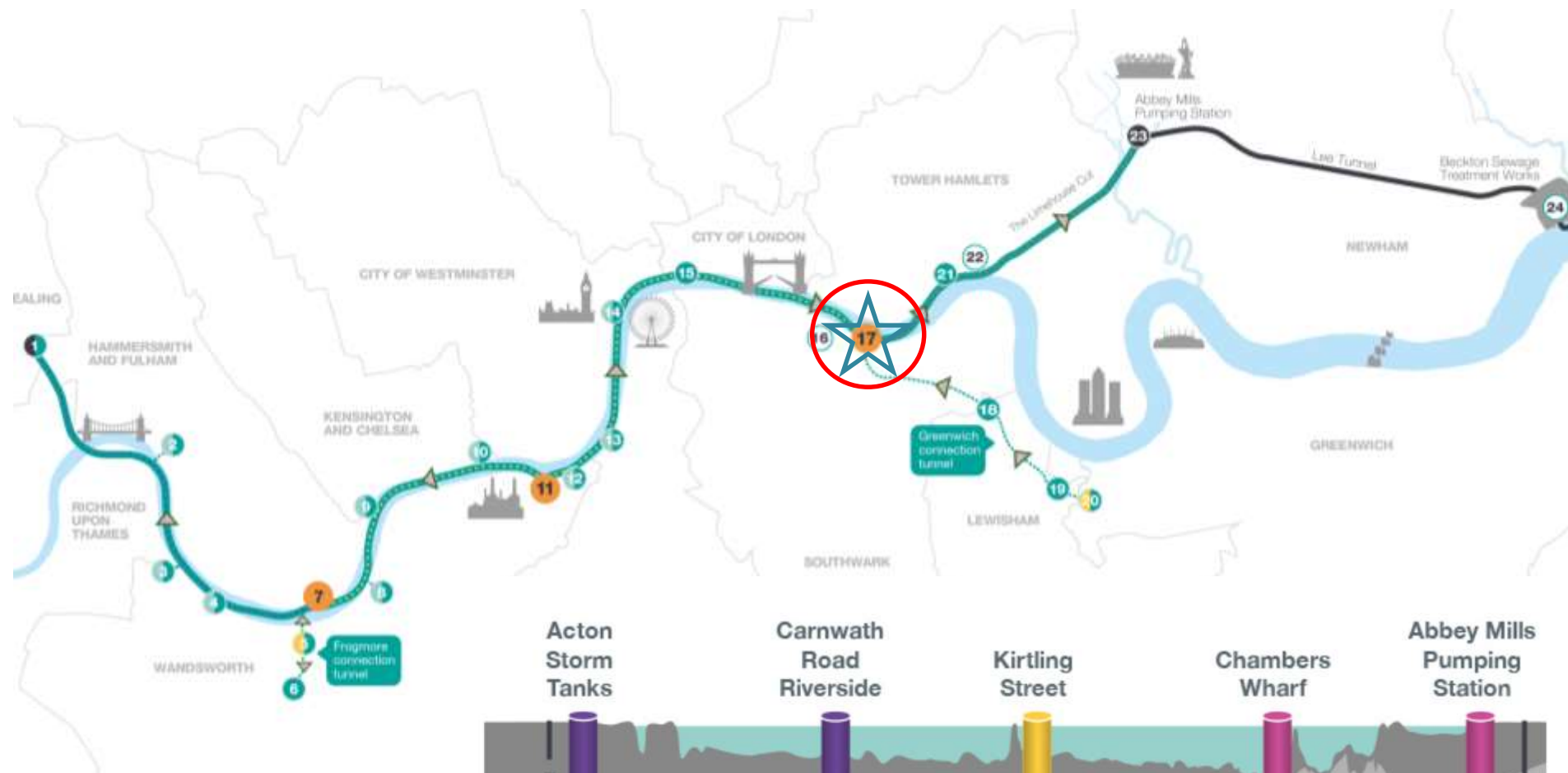


Tideway

IPLOCA Convention

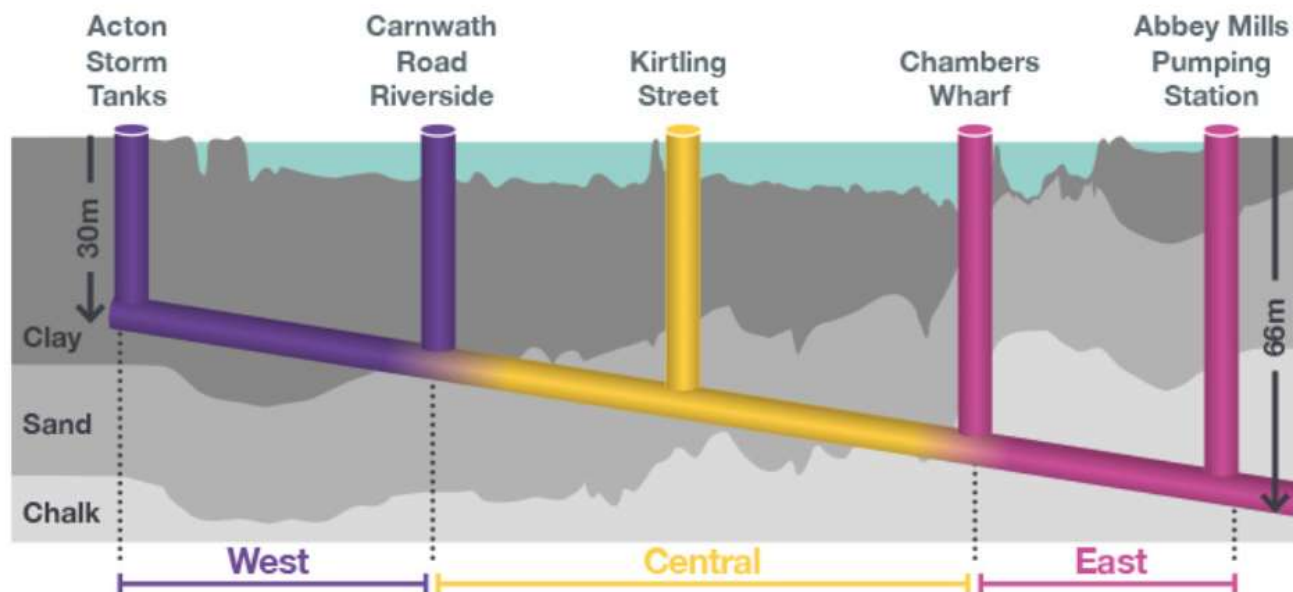
Jack Russell Archaeology Lead Tideway

13 September 2018



Map key

- Main tunnel drive tunnel site
- Main tunnel reception site
- CSO site
- Short connection tunnel drive site
- Long connection tunnel drive site
- System modifications
- Main tunnel
- - - Connection
- Lee Tunnel
- ▲ Proposed
- - - West work
- - - Central work
- - - East work



Pre-2014

- Desk Study and Building Recording for abandoned development
- Foreshore Surveys
- Monitoring test pits



2014/2015

- MOLA land-side Evaluation



2016

- MOLA Foreshore Survey
- MOLA Building Recording of river wall



2018

- MOLA excavation of main shaft



2017

- MOLA monitoring of land-side UXO and obstruction clearance



2016

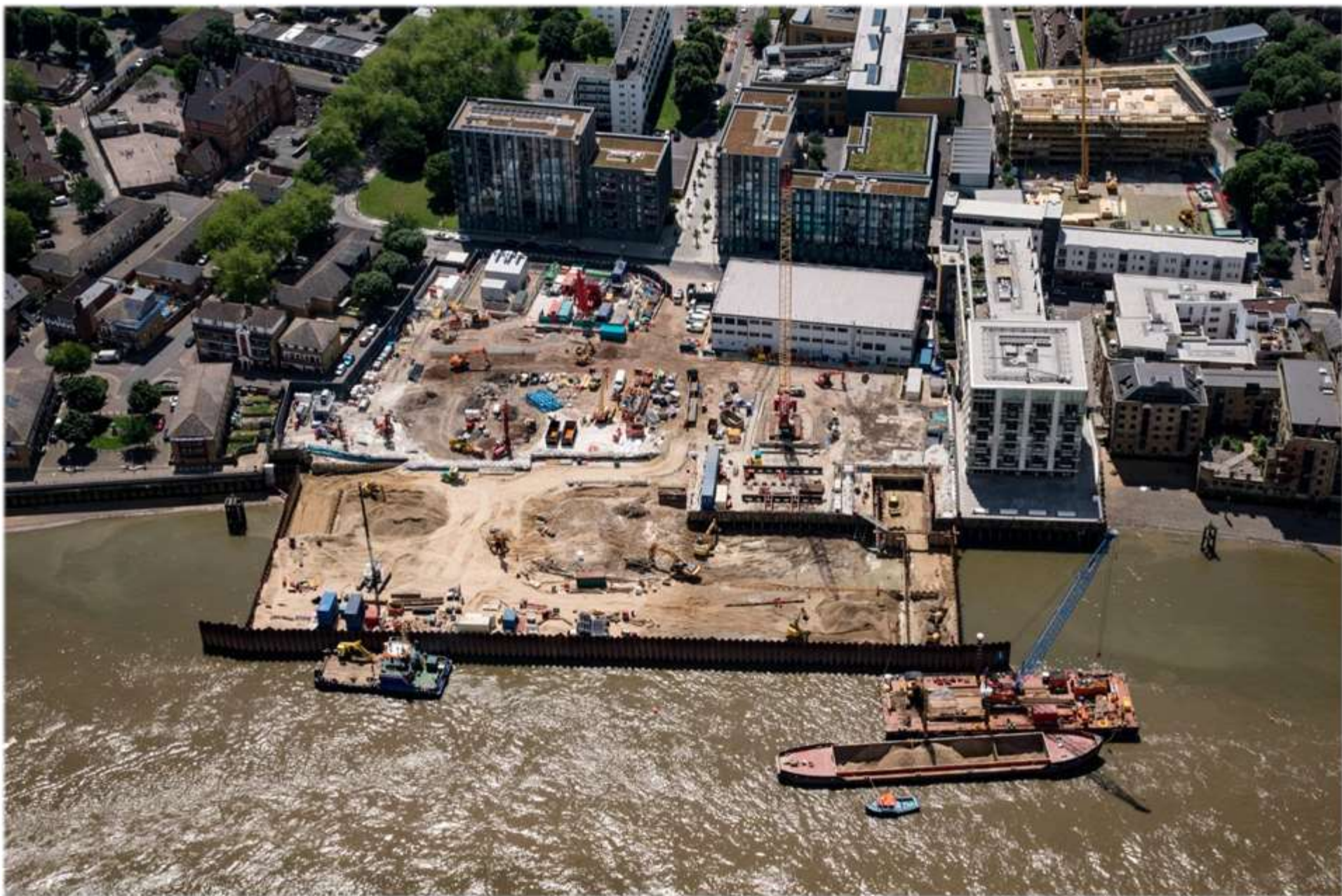
- MOLA monitoring of cofferdam installation on foreshore



CHAMBERS WHARF

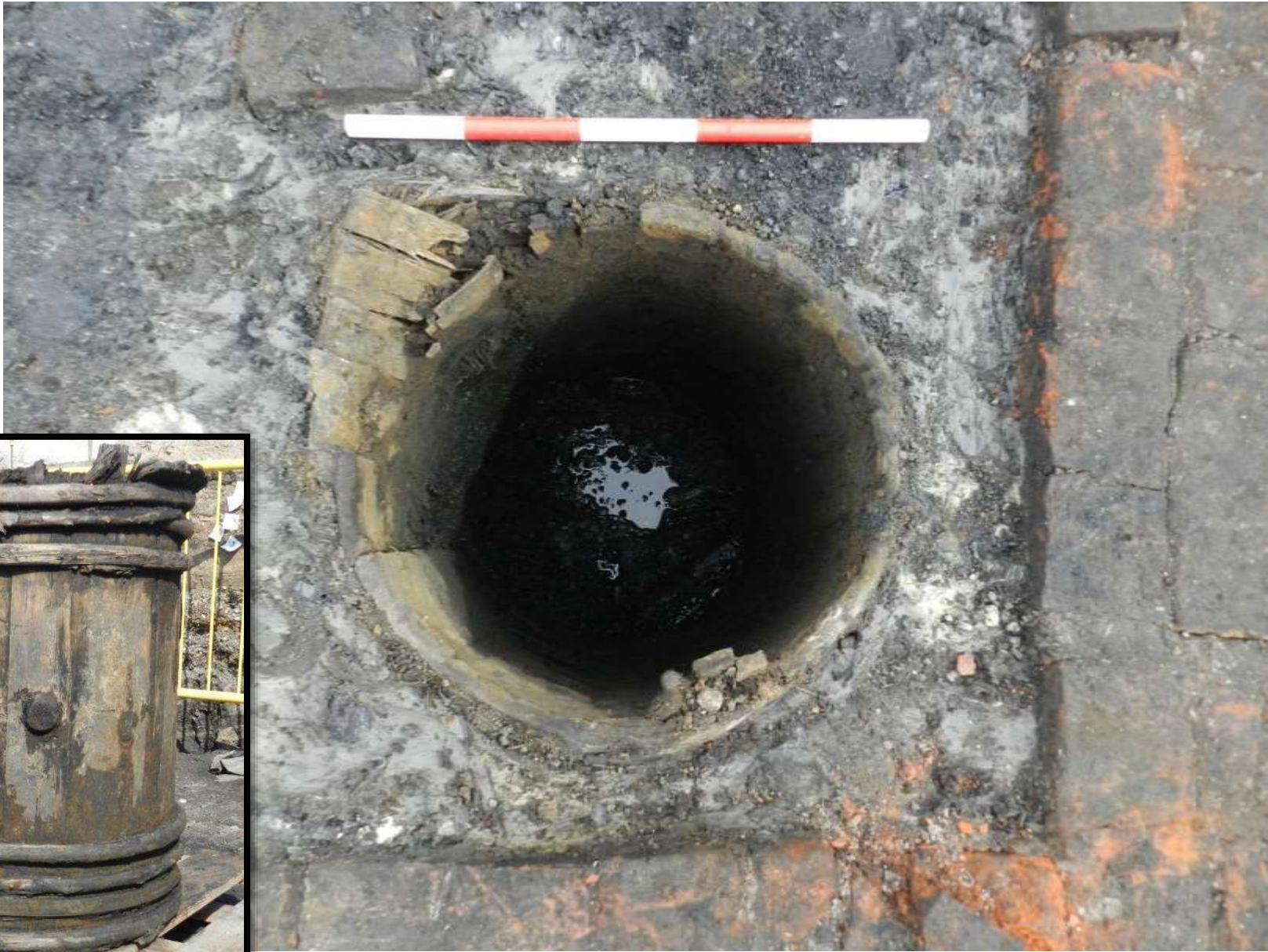


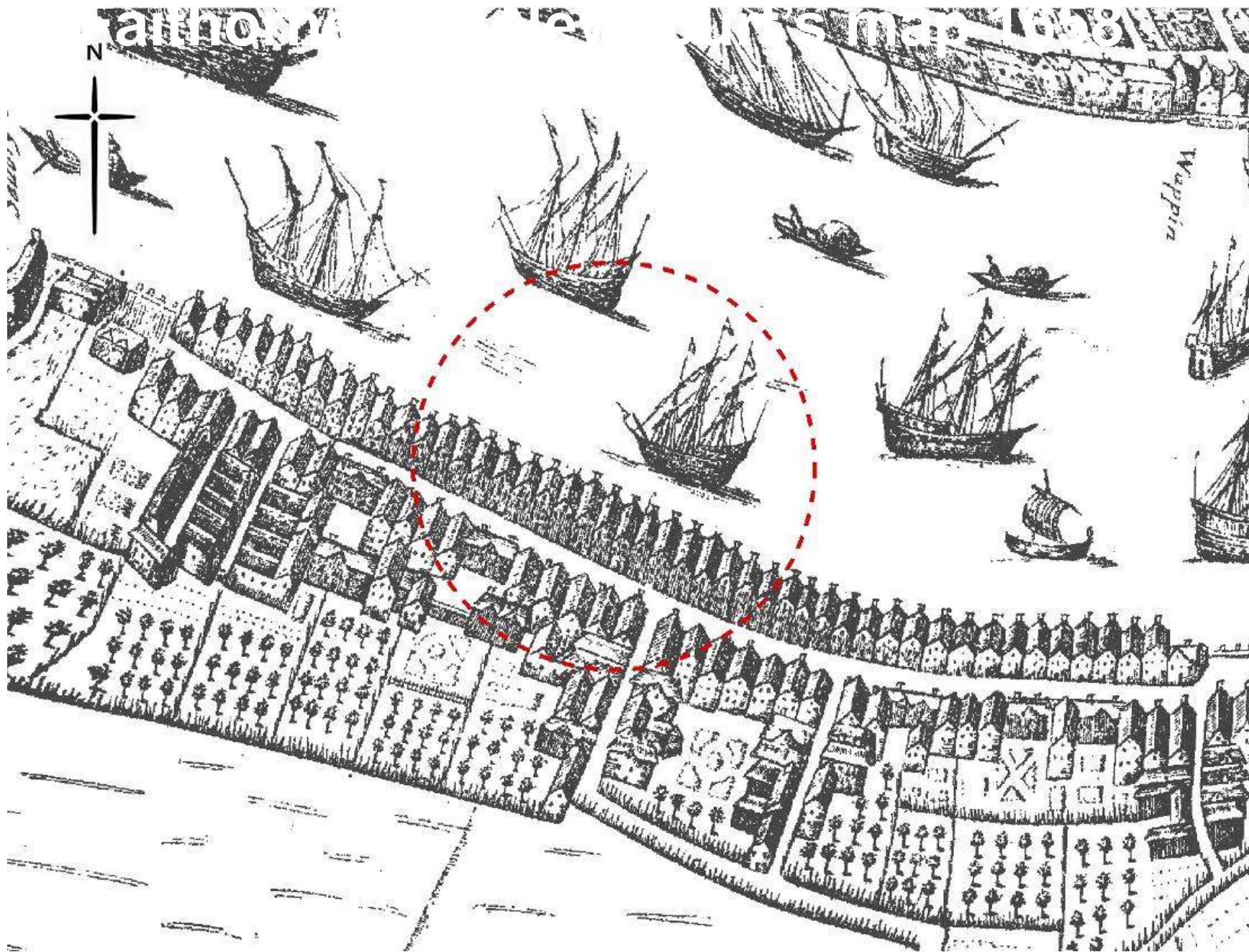










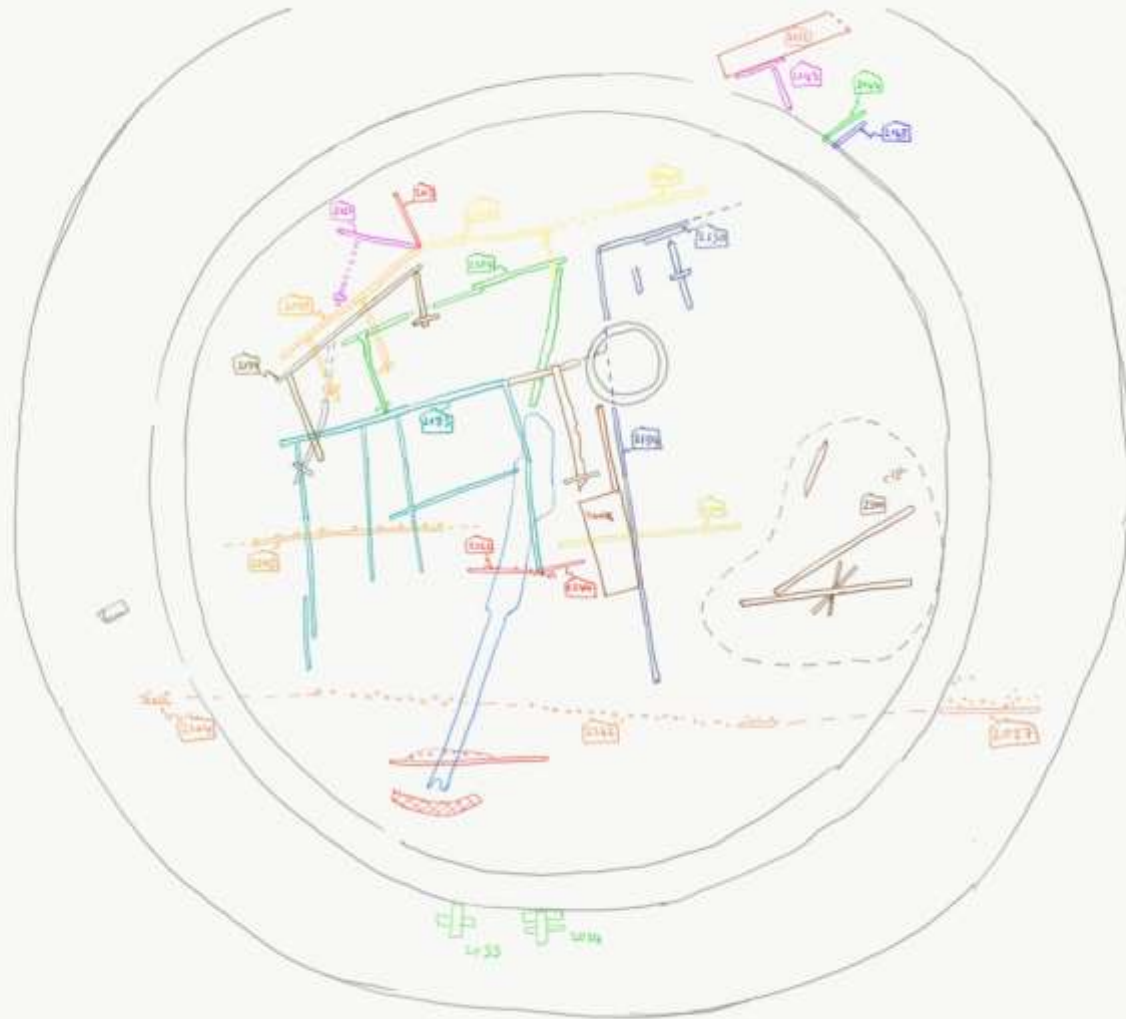




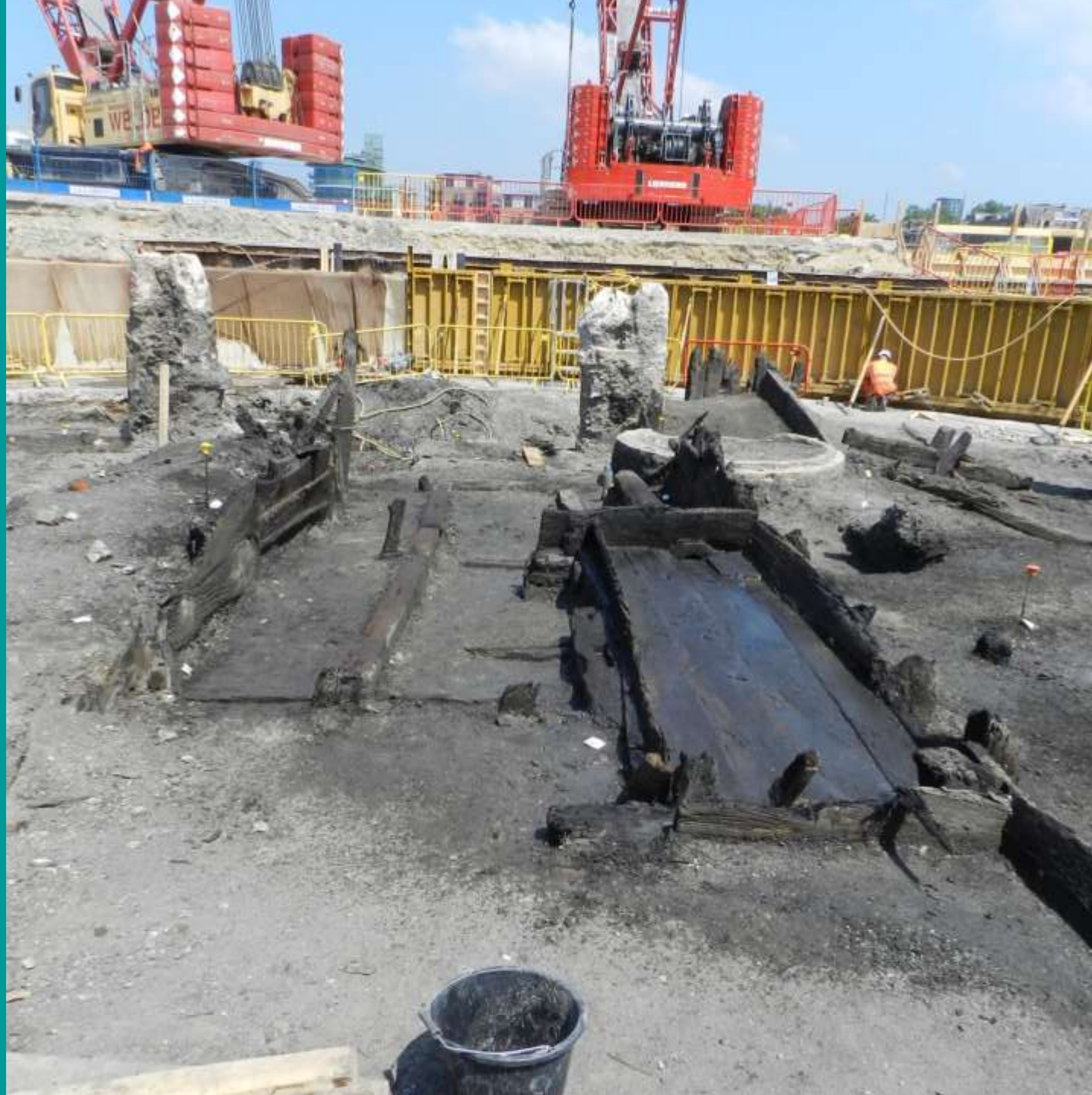
The 17th century remains



Plan of major structures and their preliminary phasing

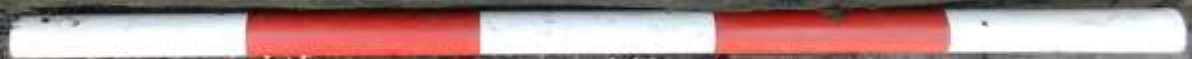








5126





Re-used ship rudder











Tel: 020 8981 2611

PLANT



hireexpress.com
981 2611



www.toolhire
Tel: 020 8981 2

Finds



Medieval structural remains











The shaft at the end of the archaeological excavations



Further work



- Processing, analysis, and eventually publication of results
- Archaeological excavation of a ventilation chamber next to the shaft, expected in 2019



www.tideway.london
helpdesk@tideway.london

