



2012 IPLOCA Environmental Statistics Report

Message from the HSE Committee

The IPLOCA HSE Committee has carefully reviewed the 2012 environmental statistics as received from its members. This is the 3rd year that these statistics were submitted. The Committee is pleased to note that the rate of response from members remains high, at almost 70%, providing valuable information to all our members.

We all know that our industry is placing stronger and stronger focus on the protection of our environment. However, the quantity and the quality of returns still need to be improved. The Committee will continue working on this objective and will request the commitment of all members to produce the most comprehensive and reliable report possible.

Introduction

With members in more than 40 countries, IPLOCA is proud to represent some 255 of the key players in the onshore and offshore pipeline construction industry worldwide.

IPLOCA recognises the pipeline industry's responsibility to the community regarding social and environmental protection and is committed to actively promoting the adoption of all practicable measures to ensure that pipeline planning, engineering and construction are conducted efficiently in a sustainable, social and environmentally responsible manner.

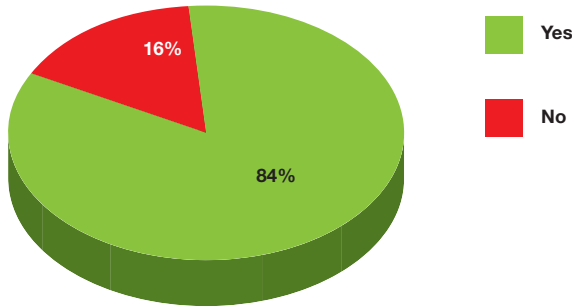
IPLOCA is always looking at new initiatives and established the Environmental Statistics Return Form in 2010.

The goal of this form is to respond to growing worldwide trends in environmental accountability. IPLOCA's hope is that this form will serve members who are already active in the environmental assessment domain, and serve as an example to those who have yet to undertake any such action.

We strongly encourage all Regular Members and Associate Members who have field construction activities to provide this information so that the entire membership can benefit from the aggregated information.

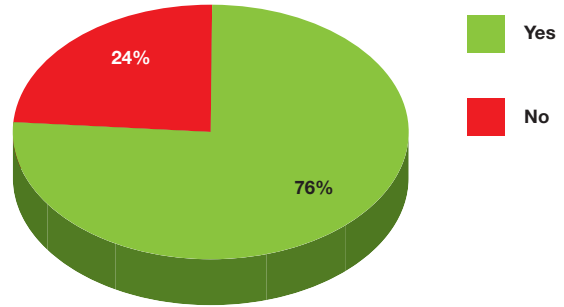
Environmental Management Systems

Application of an EMS by IPLOCA Members



A high adoption rate of EMS's exists within the IPLOCA membership.

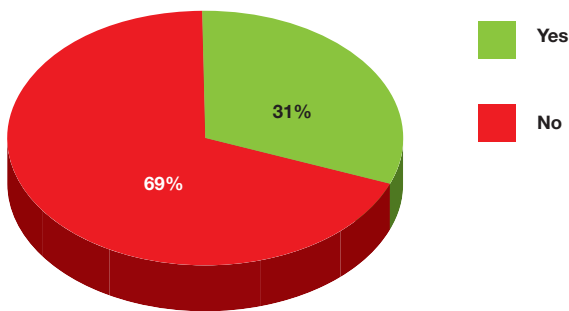
Application of ISO 14001 by IPLOCA Members



The ISO 14001 environmental management system certification has a 76% adoption rate - clearly a leading certification in the pipeline industry.

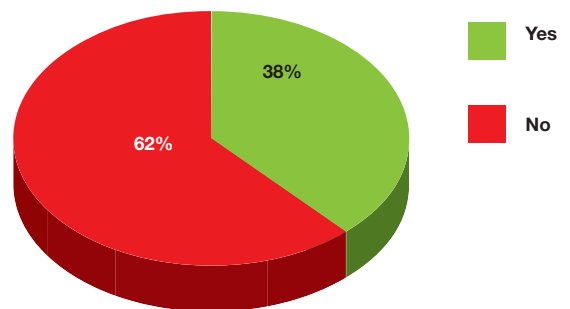
CO₂ Emissions

Calculation of CO₂ Emissions



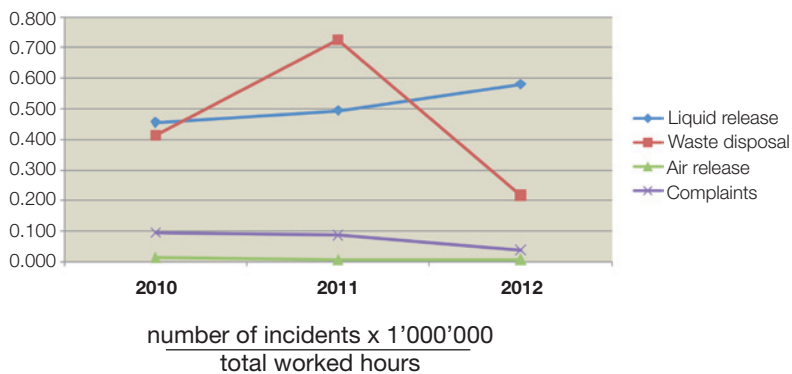
31% of the members choose to use CO₂ emissions as an indicator of their environmental performance, and 38% choose to apply a carbon emission reduction policy.

Application of a Carbon Emission Reduction Policy

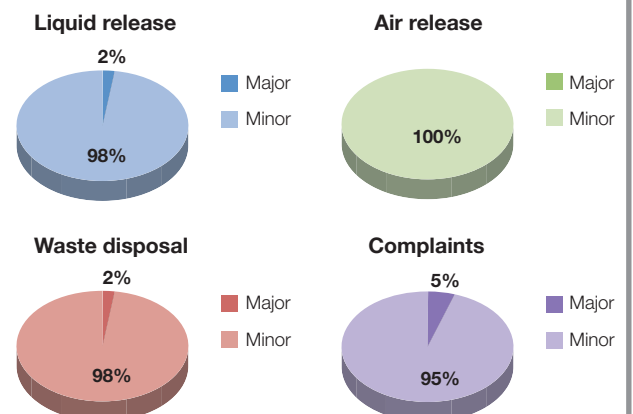


Incidents

Environmental Incident Frequency Rates (per million worked hours)



Major vs. Minor Incidents



For complete details on classification of incidents, please visit our website: www.iploca.com

Mitigation & Enhancement Methods

Below is an extract of various initiatives carried out by our members to mitigate, offset and enhance environmental incidents.

Waste Reduction

Implementation of environmental friendly waste management

Reduction of paper used in favour of electronic communications and duplex printing

Management of drilling fluids by centrifugation

Colour-coded waste bins for different waste types

Sewage treatment and disposal / Soil & Water contamination treatment

Installation of exhaust system units to sort 95% of the solid materials

Habitat Preservation & Social Initiatives

Plantation and regular participation in afforestation initiatives

Archaeologist/environmentalist services, liaison with fisheries and quarantine activities

E-news magazine to share environmental good practices with personnel

Partnership with natural resource groups for restoring trout streams, removing invasive species, and making financial donations to notable projects

Recycling of concrete and asphalt as raw material and using them in landfills

Air Releases

Implementation of effluent treatment plant to control road dust

Reduction of individual transports in favour of common transport

Application of particle filters on construction machines and use of bio fuel if possible

Replacement of engines/machines with the newer ones with significantly lower emission and fuel consumption

Limitation of CO₂ exhaust by reducing runtime of heavy equipment, and controlling vehicular speed

Dust suppression by spraying of water

Energy Efficiency

Shutting down equipment several times a day during non-active periods

Use of thermal water to heat buildings

Installation of solar panels and campaigns to use natural light

Pilot project to switch to hybrid vehicles

Management Initiatives

- Employee education/induction on ecological safety, native species, archeological, biological and paleontological restrictions
- Agreement with investor on environmental protection, and procurement of goods/services with low environmental impact
- ISO 26000
- Display of banners about “Ecological Golden Rules”, and posters related to waste management and energy consumption in the projects
- Development of an environmental program in order to get a real commitment from workers and their families
- Preparation of a documented Environmental Management System and its implementation

Noise Reduction

- Noise surveys
- Continuous noise monitoring and taking action when necessary

Liquid Releases

- Expansion of the use of non-water-polluting substances
- Installation of hydraulic hose testing facility to reduce hose bursts and eliminate oil spills accordingly
- Reinfiltration of extracted groundwater when applicable
- Innovation of sustainable pipeline for the preservation of biodiversity and wetlands, and water management
- Use of special settling basins to treat waste water after pressure testing

Carbon Reduction

- Diesel use for all mechanisms and construction equipment to reduce carbon emission
- Carbon compensation through the planting of trees /re-vegetalisation.
- “Carbon neutral at 2020” campaign
- Green house gas emission reduction program

Disclaimer

Whilst every effort has been made to ensure the accuracy of the information contained in this publication, neither IPLOCA nor any of its members past, present or future warrants its accuracy nor will they, regardless of its or their negligence, assume liability for any foreseeable or unforeseeable use made thereof, which liability is hereby excluded. Consequently, such use is at the recipient's own risk on the basis that any use by the recipient constitutes agreement to the terms of this disclaimer. The recipient is obliged to inform any subsequent recipient of such terms.