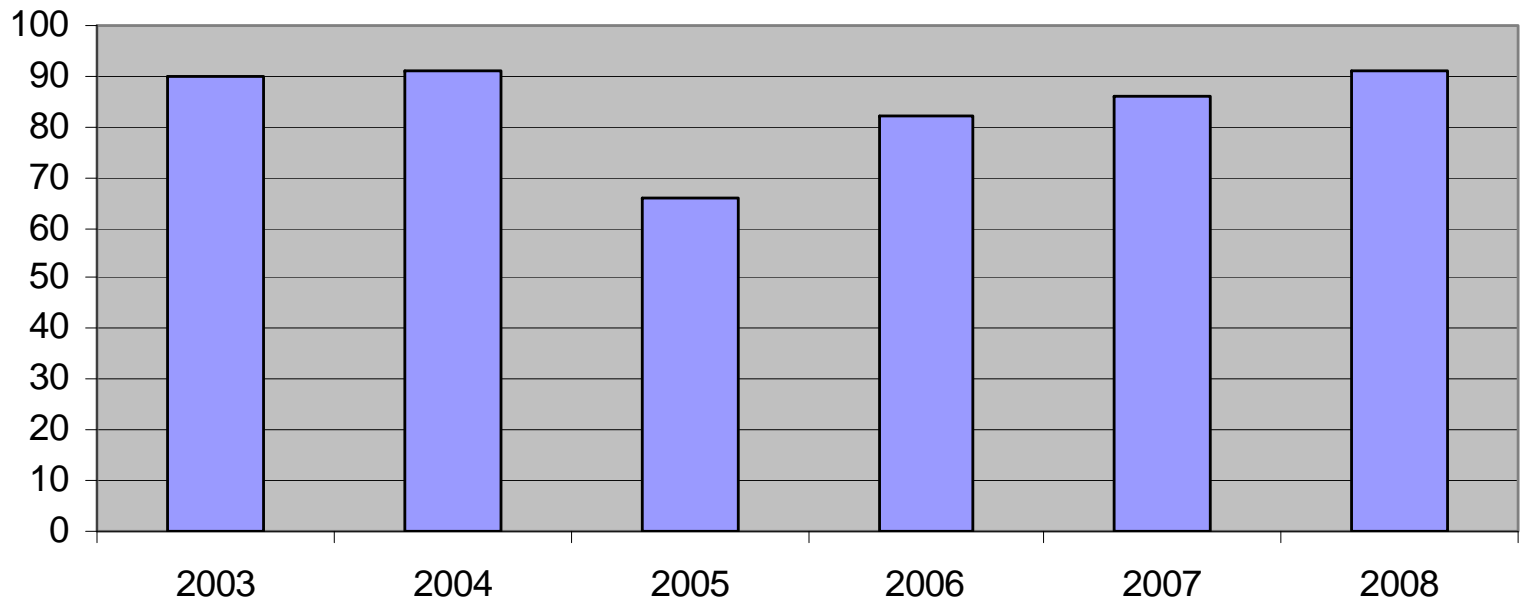




2008 Health & Safety Statistics

History of Statistics Returns

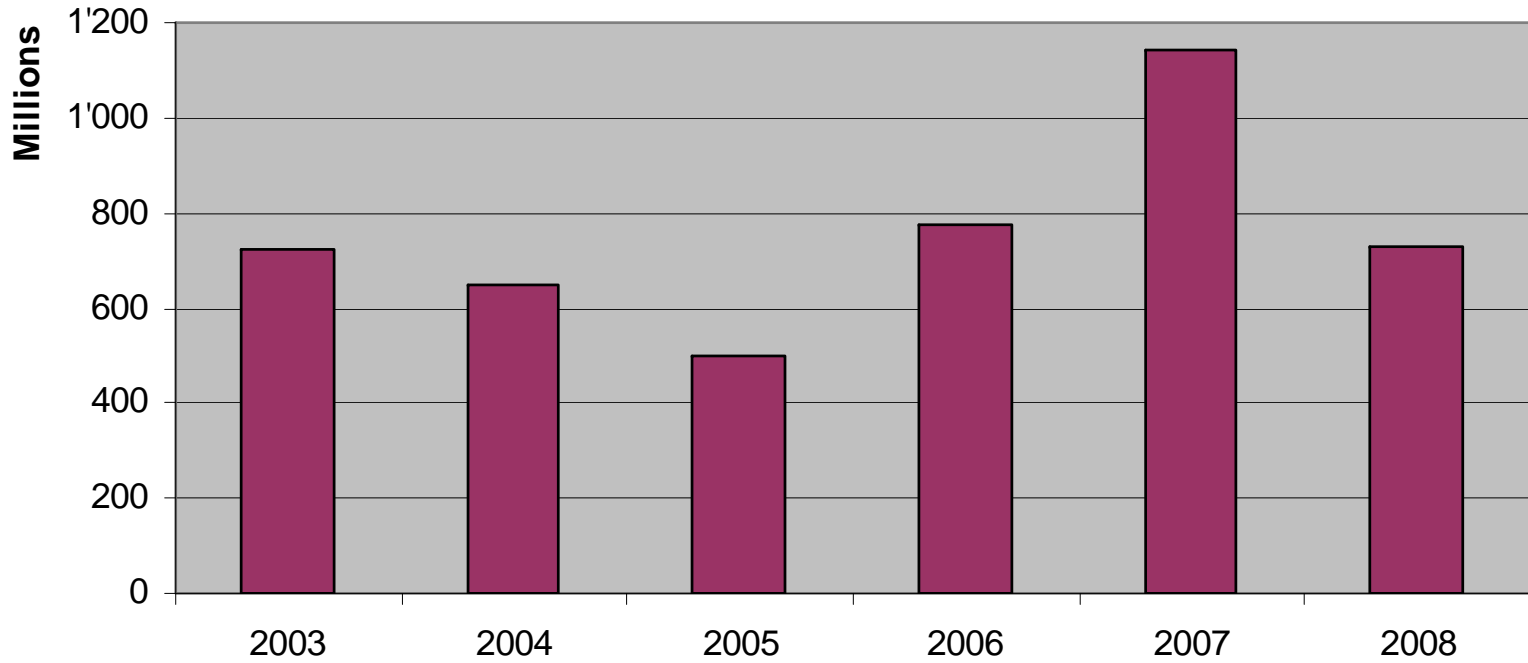


	2003	2004	2005	2006	2007	2008
■ Submissions	90	91	66	82	86	91



2008 Health & Safety Statistics

History of Man Hours



	2003	2004	2005	2006	2007	2008
■ Man Hours	724'382'240	650'132'559	499'169'602	773'954'572	1'141'168'919	731'262'014

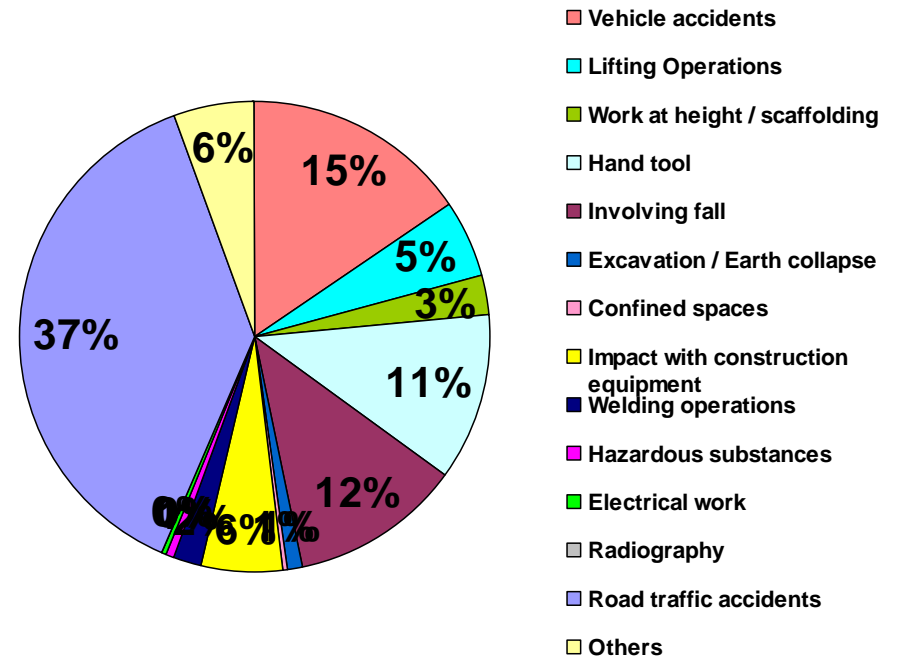
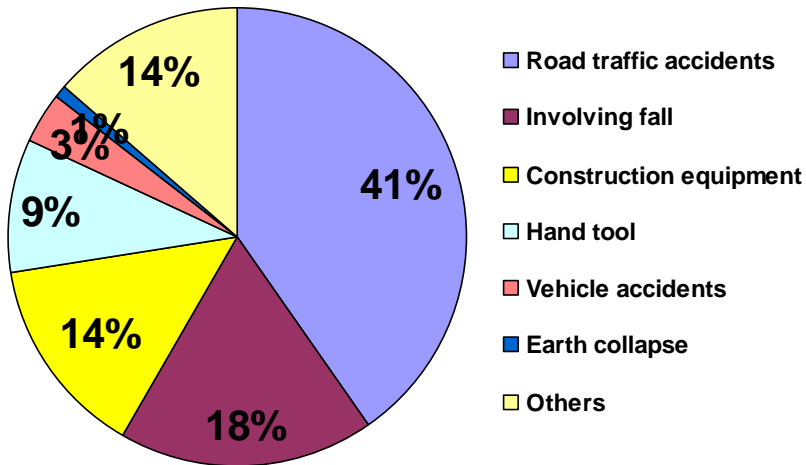


2008 Health & Safety Statistics

Accident breakdown

2007

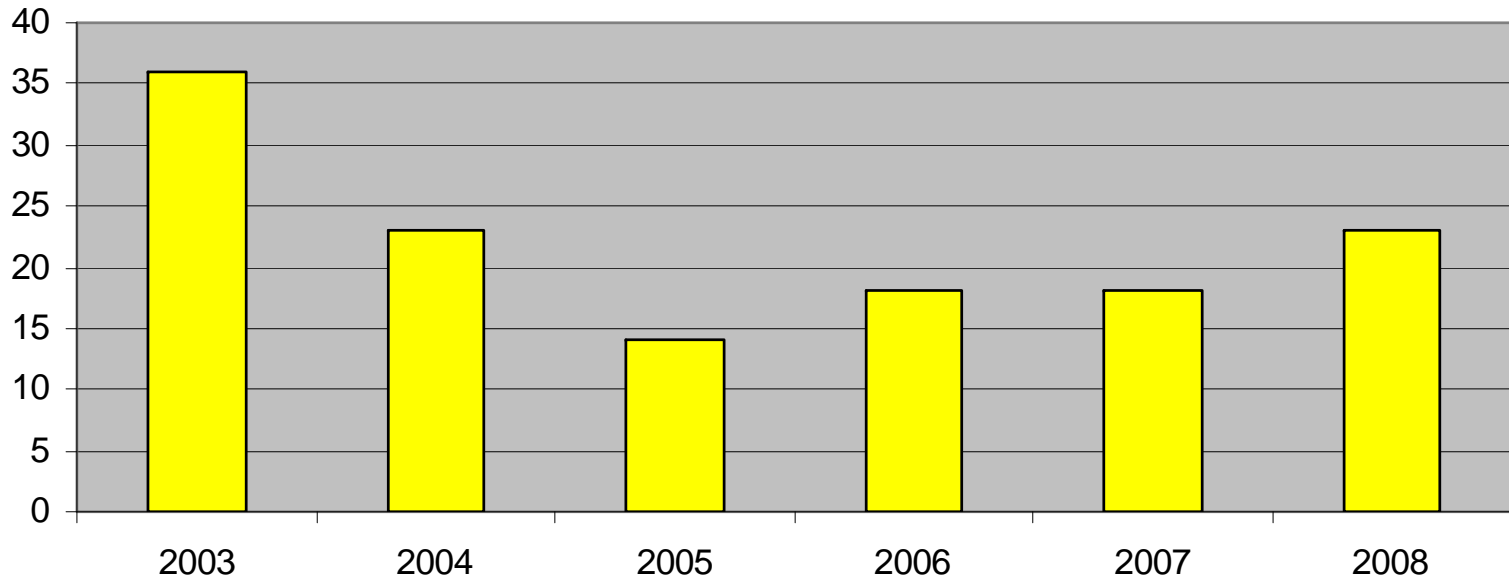
2008





2008 Health & Safety Statistics

History of fatalities

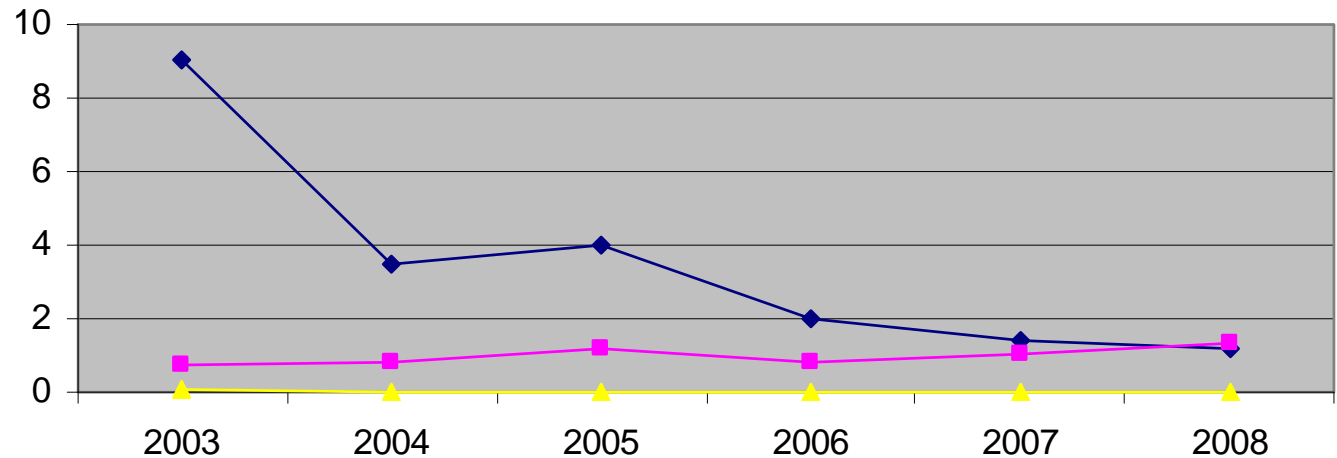


	2003	2004	2005	2006	2007	2008
■ Fatalities	36	23	14	18	18	23



2008 Health & Safety Statistics

History of frequency rates



	2003	2004	2005	2006	2007	2008
◆ LTI freq. rate*	9.04	3.46	3.98	2.00	1.40	1.17
■ RTA freq. rate**	0.77	0.83	1.18	0.78	1.04	1.34
▲ Fatality freq. rate	0.05	0.04	0.03	0.02	0.02	0.03

* LTI: Lost time injuries

** RTA: Road traffic accidents



2008 Health & Safety Statistics

Onshore > 1.5 Million M/Hrs/Year

- 46 Returns
- 27 Frequency Rate < 1
- 35 Reported 0 fatalities
- 835 Road traffic accidents
- 19 Fatalities



2008 Health & Safety Statistics

Onshore < 1.5 Million M/Hrs/Year

- 35 Returns
- 10 Frequency Rate < 1
- 35 Reported 0 fatalities
- 109 Road traffic accidents
- 0 Fatalities



2008 Health & Safety Statistics

Offshore

- 6 Returns
- 5 Frequency Rate < 1
- 5 Reported 0 fatalities
- 17 Road traffic accidents
- 4 Fatalities



2008 Health & Safety Statistics

Field Services & Special Contractors

- 5 Returns
- 0 Frequency Rate < 1
- 5 Reported 0 fatalities
- 18 Road traffic accidents
- 0 Fatalities