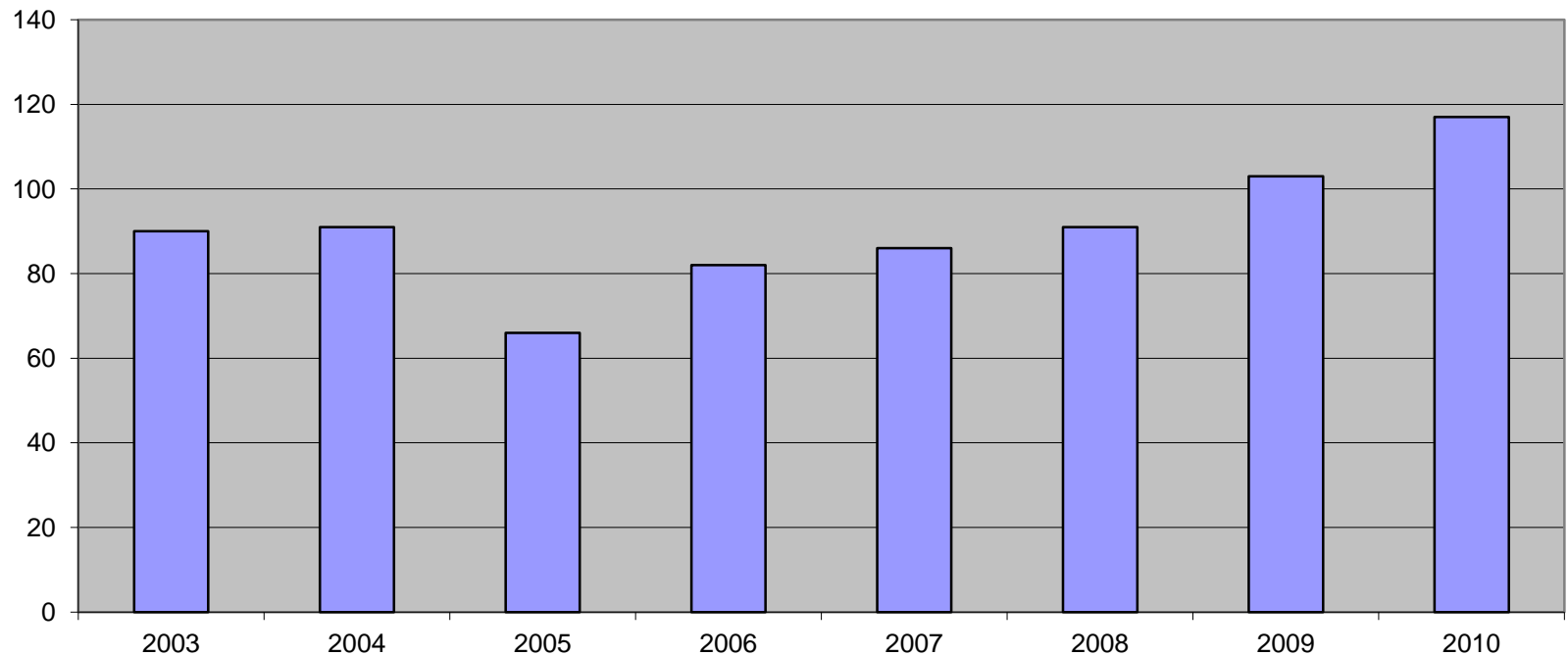




2010 Health & Safety Statistics

History of Statistics Returns

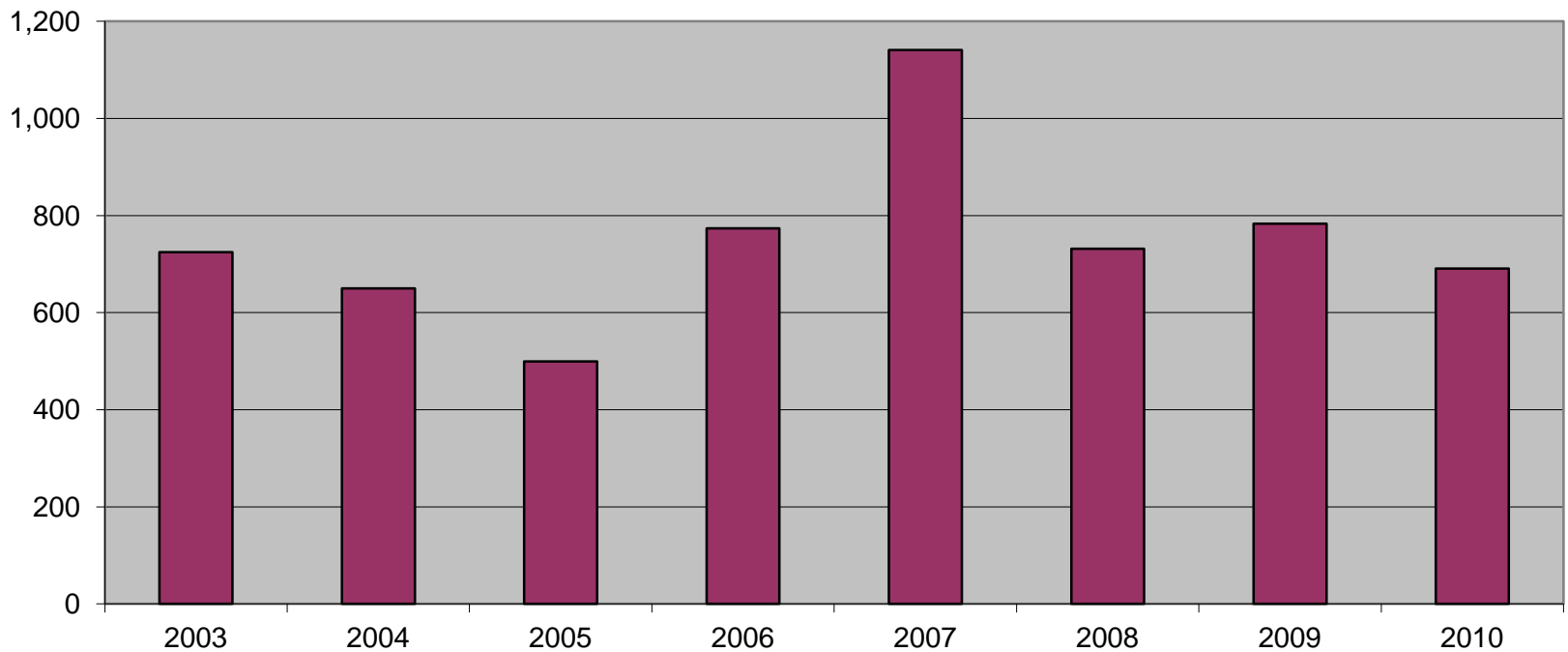


	2003	2004	2005	2006	2007	2008	2009	2010
Submissions	90	91	66	82	86	91	103	117



2010 Health & Safety Statistics

History of Man Hours (in million)



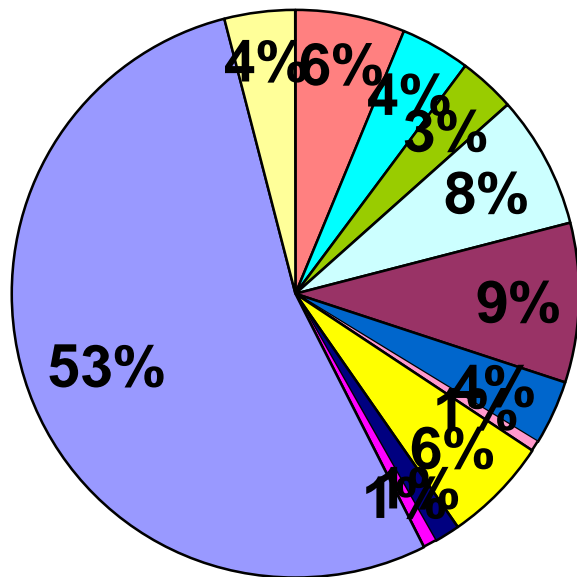
	2003	2004	2005	2006	2007	2008	2009	2010
■ Man hours	724,382,240	650,132,559	499,169,602	773,954,572	1,141,168,919	731,262,014	783,347,961	690,544,790



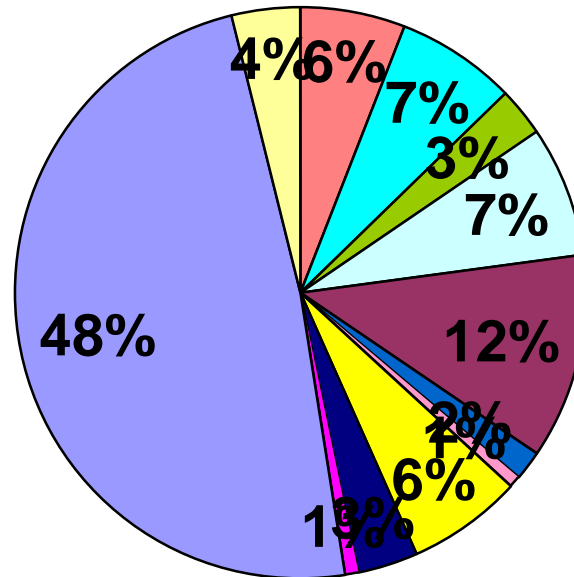
2010 Health & Safety Statistics

Accident breakdown

2009



2010

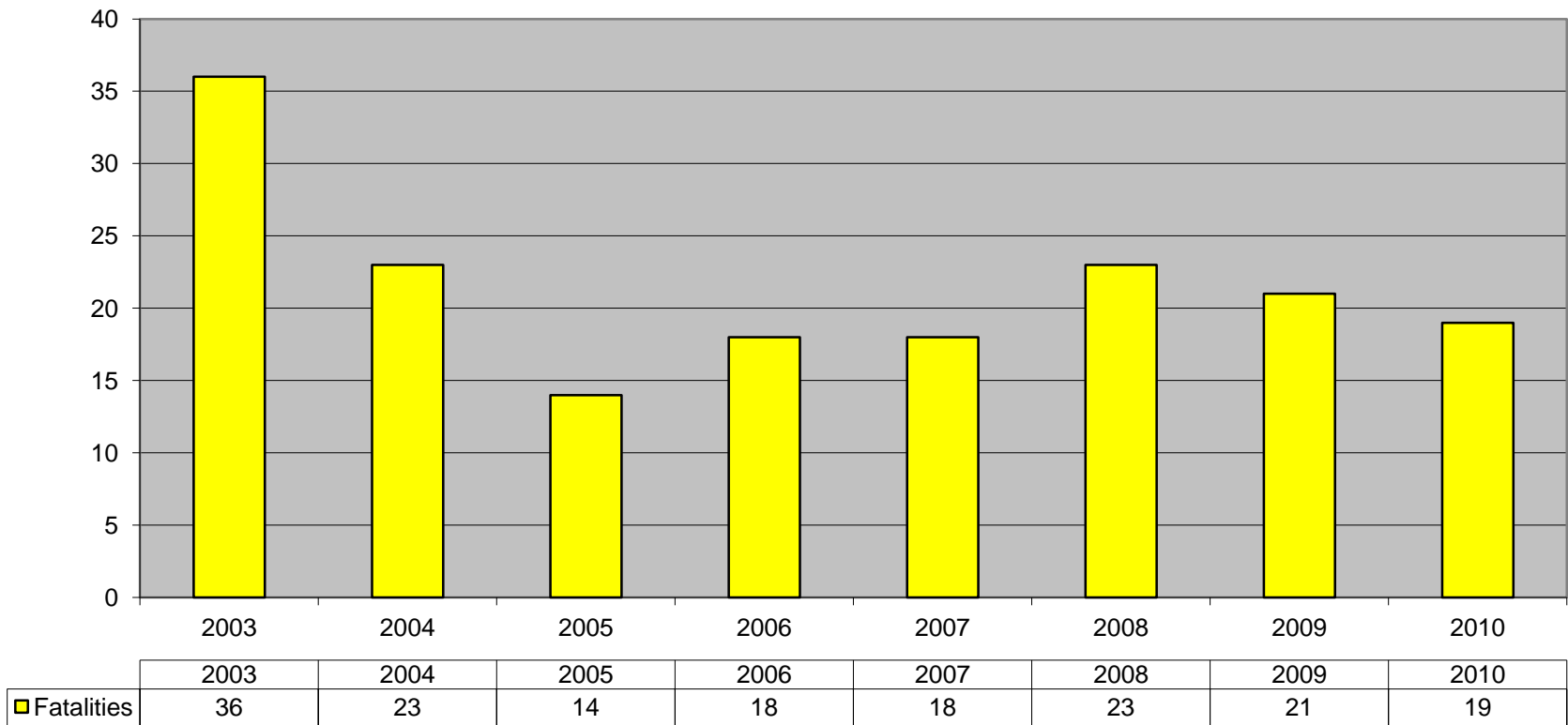


- Vehicle accidents
- Lifting Operations
- Work at height / scaffolding
- Hand tool
- Involving fall
- Excavation / Earth collapse
- Confined spaces
- Impact with construction equipment
- Welding operations
- Hazardous substances
- Road traffic accidents



2010 Health & Safety Statistics

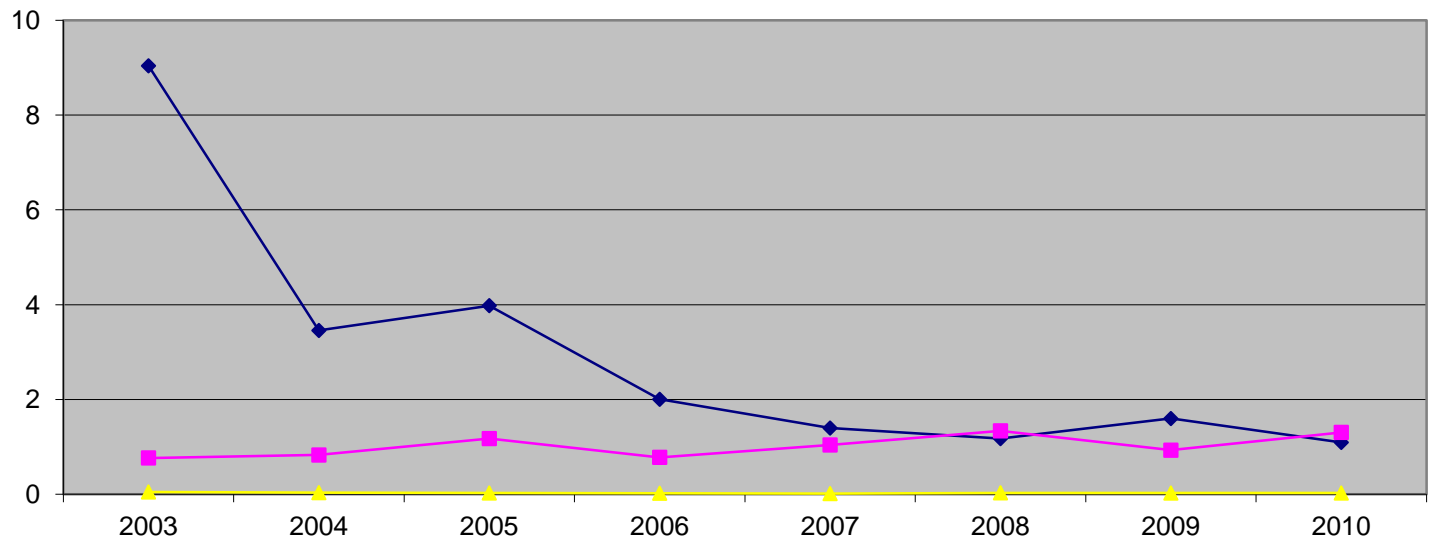
History of fatalities





2010 Health & Safety Statistics

History of frequency rates



	2003	2004	2005	2006	2007	2008	2009	2010
—◆— LTI freq. rate*	9.039	3.456	3.980	2.004	1.398	1.175	1.598	1.09
—■— RTA freq. rate**	0.768	0.829	1.176	0.780	1.041	1.339	0.931	1.306
—▲— Fatality freq. rate	0.050	0.035	0.028	0.023	0.016	0.031	0.027	0.028

* LTI: Lost time injuries

** RTA: Road traffic accidents

Formula: $LTI/RTA/FTL \times 1,000,000$ divided by total man-hours worked



2010 Health & Safety Statistics

Onshore > 1.5 Million M/Hrs/Year

- 60 Returns
- 35 Frequency Rate < 1
- 47 Reported 0 fatalities
- 777 Road traffic accidents
- 17 Fatalities



2010 Health & Safety Statistics

Onshore < 1.5 Million M/Hrs/Year

- 39 Returns
- 16 Frequency Rate < 1
- 37 Reported 0 fatalities
- 95 Road traffic accidents
- 2 Fatalities



2010 Health & Safety Statistics

Offshore

- 8 Returns
- 6 Frequency Rate < 1
- 8 Reported 0 fatalities
- 17 Road traffic accidents
- 0 Fatalities



2010 Health & Safety Statistics

Field Services & Special Contractors

- 6 Returns
- 1 Frequency Rate < 1
- 6 Reported 0 fatalities
- 13 Road traffic accidents
- 0 Fatalities