



# CNH INDUSTRIAL AS TRUSTWORTHY PARTNER FOR PIPELINE CONSTRUCTION BUSINESS

FABRIZIO CEPOLLINA, GENERAL MANAGER, RUSSIA AND BELARUS

Moscow, Russia

June 11, 2019





# INDUSTRIAL

Contains confidential proprietary and trade secrets information of CNH Industrial. Any use of this work without express written consent is strictly prohibited.



# CNH Industrial

Part of the big holding



# CNH Industrial Global Footprint

2018

1

COMPANY



12

BRANDS



65,000

EMPLOYEES



\$1,1

BILLION  
INVESTED  
IN R&D



54

R&D  
CENTERS



6,000

INDIVIDUALS  
DEDICATED TO  
INNOVATION



180

NATIONAL  
MARKETS



66

PLANTS



\$29.7

BILLION  
REVENUES



11,051

ACTIVE  
PATENTS

# CNH Industrial

## Company Structure





# CNH Industrial Global Footprint

**Global #4 capital goods company**, supported by continuous **innovation** and **R&D**

Uniquely diversified across **products** and **geographies**, in **180 countries**

**Global leading player** in **agricultural equipment** segment

**Global player** in manufacture of **construction equipment** and **commercial vehicles**

**Leading powertrain technology** with **global scale** in **light-, medium- and heavy-duty diesel engines**

**Strong position** for growth in **developing markets**





# CNH Industrial Global Footprint

Main Awards, Launches and Events

## AGRICULTURAL EQUIPMENT



**“Machine of the Year 2019”**  
CR Relevation, T5 Auto Command,  
Quadtrac CVXDrive, Versum CVXDrive

## CASE



**“Good Design” Award for  
Excellence and Innovation**

## CASE IH

## IVECO



**“Sustainable truck  
of the Year 2019”**  
Stralis NP 460

## FPT INDUSTRIAL



**Debut of new gas Cursor 13:  
100% natural**

# CNH Industrial Global Footprint

## Quality

### PARTS & SERVICE

#### WORLD CLASS LOGISTICS



✓ 5 distribution centers involved

### QUALITY CONTROL SYSTEM

#### WORLD CLASS MANUFACTURING

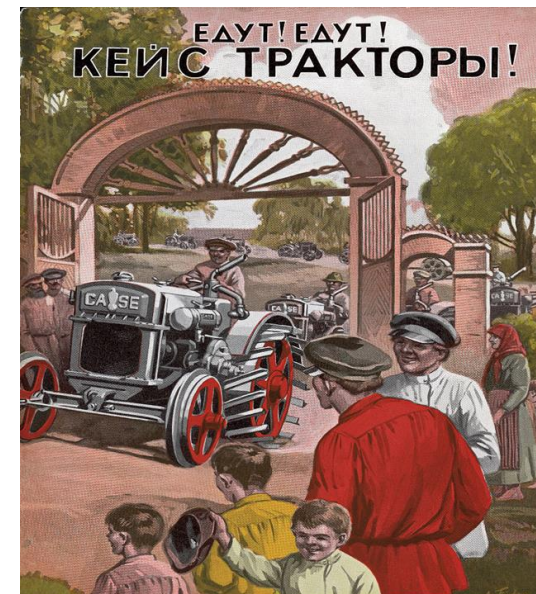
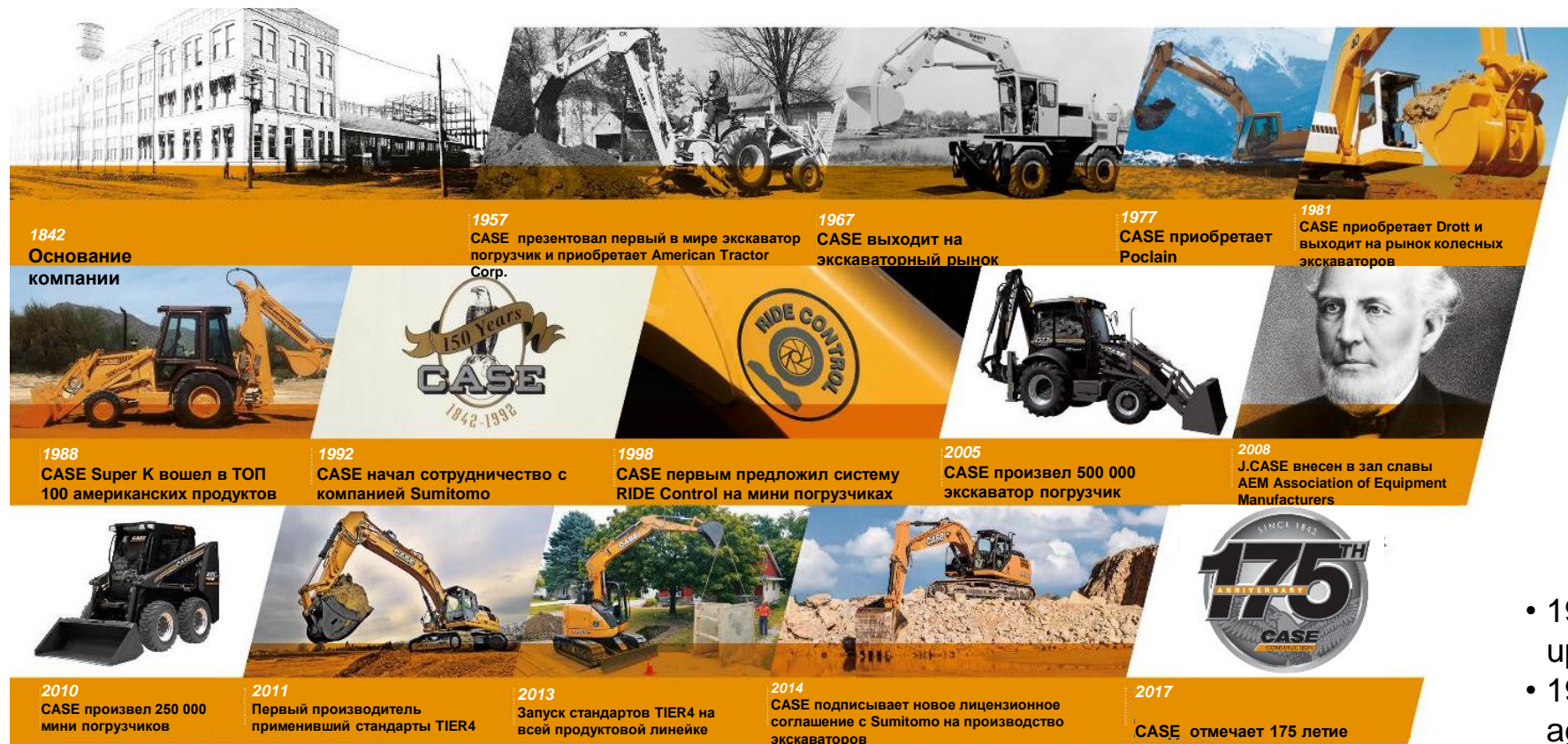


One of the highest global standards of continuous manufacturing improvement through excluding of loss



# CASE – Brand History

177 years



- 1908 - CASE first European office set up in 1908 in Odessa, Russia
- 1908-1916 - CASE shipped to Russia agricultural equipment and vehicles

### Russia

- Manufacturing operations for agricultural and construction equipment.
- Production (Joint Venture) and distribution of commercial vehicles.





# CNHI in Russia

## Construction Equipment

- More than 20 years officially in Russia
- More than 10 000 machines perform successfully in the country



- Offers a full line of construction equipment, including excavators built in Japan
- 10 dealers with 20+ outlets
- Best sellers: CX210B excavators, 570ST backhoe loaders (India) and SV250 skid steer loaders



- Specializes in the compact line
- 1 dealer with 20+ outlets
- Best sellers: B115 backhoe loaders and L218 skid steer loaders



STRONG POSITION: CASE HEAVY LINE  
CONSIDERABLE GROWTH IN CRAWLER  
EXCAVATORS AND BACKHOE LOADERS





# CASE Line-up in Russia and Belarus



**CHEX**  
Weight from 13t to 80t



**DZ**  
Weight from 13,6t to 24t



**WL**  
load capacity from 3,5 to 9t



**MG**  
Weight from 16t to 20,2t



**TLB**  
Power from 96 to 110h.p.



**CTL**  
Load capacity  
From 860 to 1209kg



**SSL**  
Load capacity  
From 560 to 1360kg



**TH**  
Lifting range  
from 13 to 17m

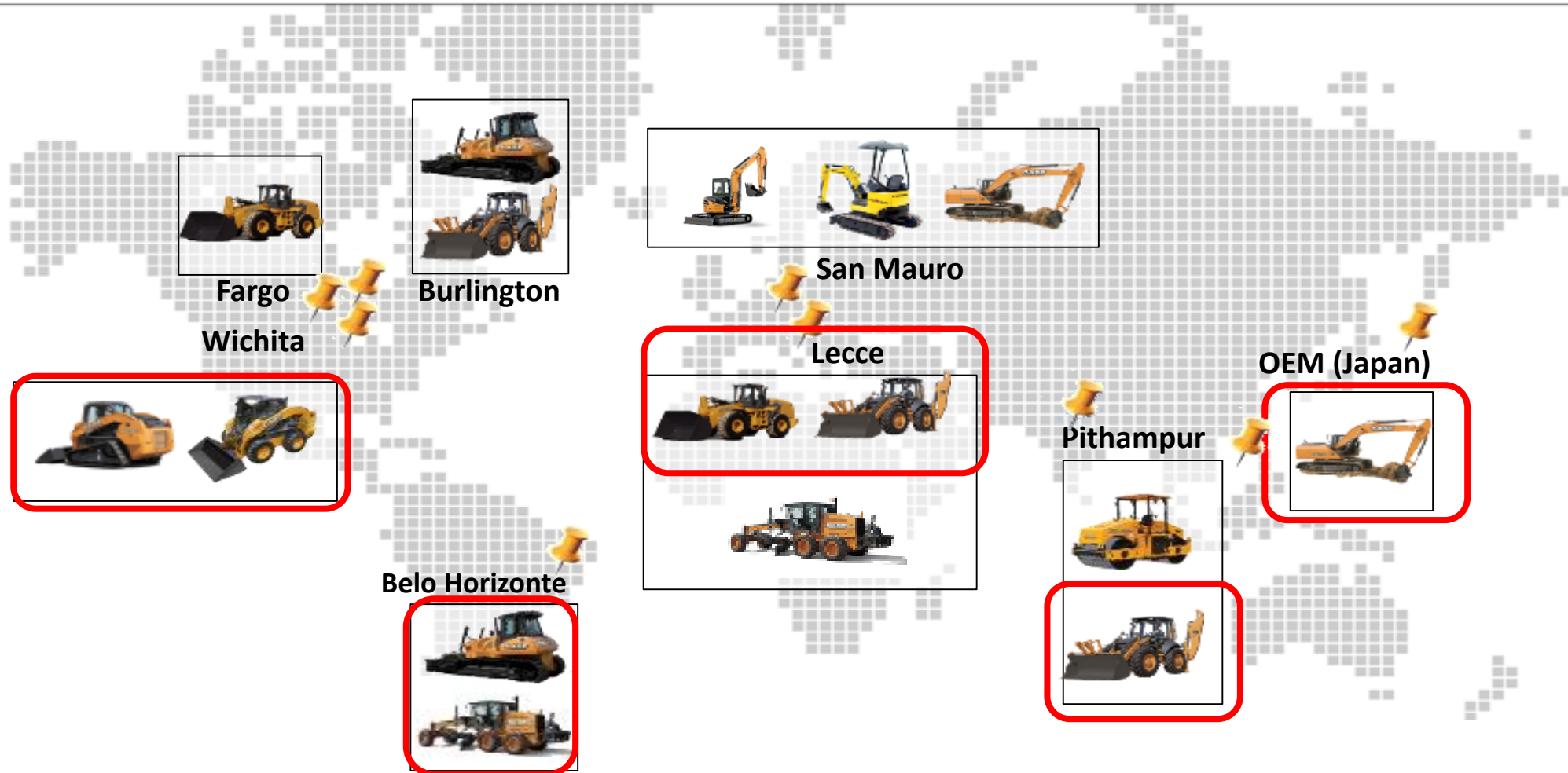
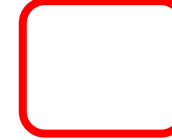
# Global Plants

Product Availability

WW



Russia

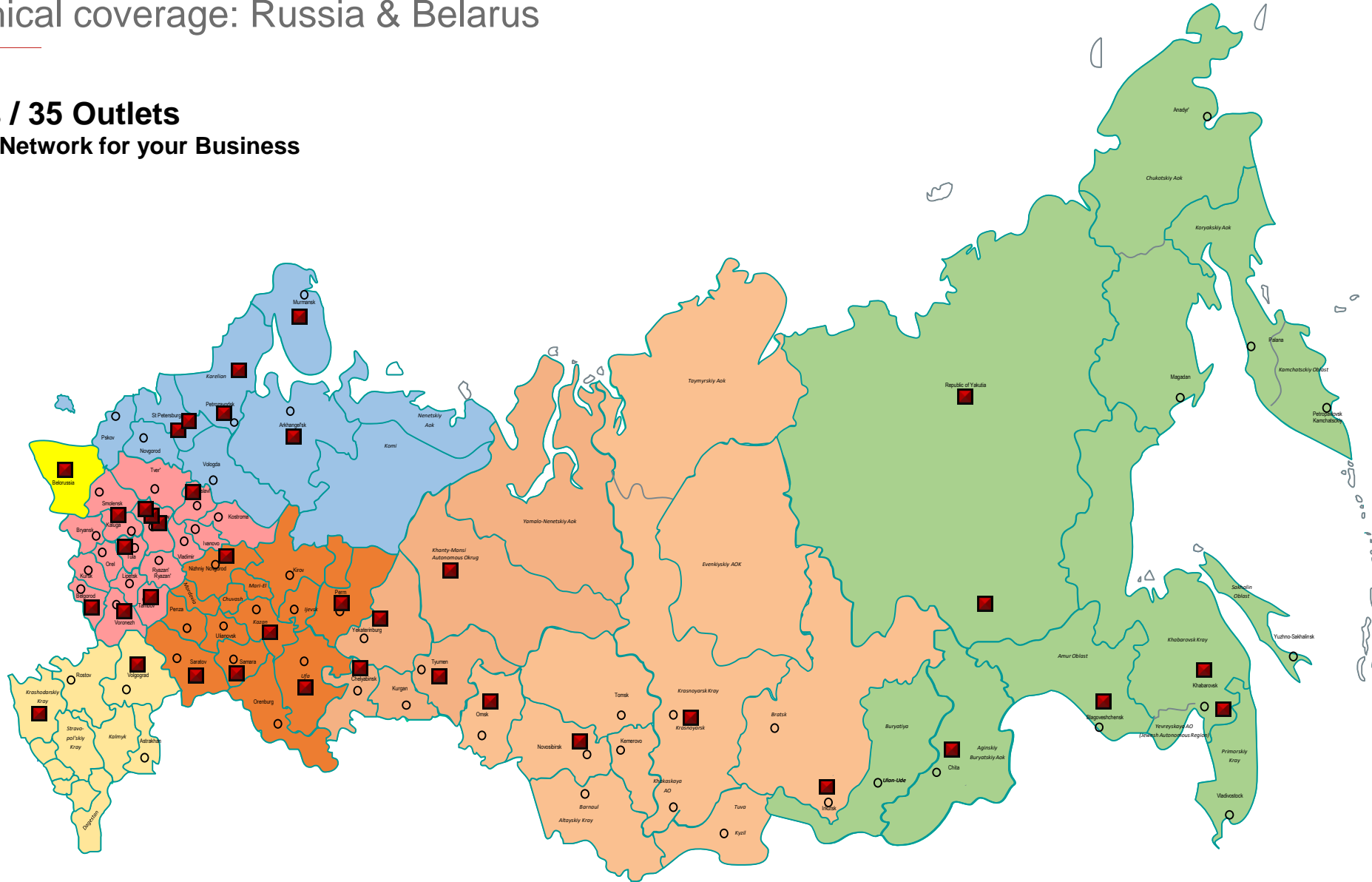


# Case Dealer Network, June 2019

Geographical coverage: Russia & Belarus

**10 Dealers / 35 Outlets**

**Professional Network for your Business**





# New C-series Excavator launch

---



# Skid Steer Loaders: 50 year Anniversary

---





# Thank You!