



Applus⁺

Together
beyond
standards

How CORE answers challenges due to COVID-19

2020



Note

The technical details and more information will be shared about the project when approvals from our client is in place. We discussed this matter with mr. Juan Arzuaga on 22nd June 2020 and he advised to submit the project on confidentiality level and when approvals are in place, we will share all the project specific and technology details.

Project description

Applus+ RTD enabled the development of its CORE service (Centralized Organization for Reporting and Evaluation) in 2019 to avoid the requirement to physically mobilize qualified AUT Operators to worksites mainly in order to reduce costs for its Clients.

Due to the unforeseen COVID-19 situation hindered the physical mobilization of the required qualified AUT Operators to a Client spool base worksite, endangering the continuation of the spooling trips for the Offshore Spool vessel operations. It was due to the out role of CORE service that this project could continue saving lots of delay and costs for all parties involved.

Does it constitute an identifiable Step forward in Technology/ construction process

Applus+ RTD CORE service is the first step in structurally saving costs for its Clients during new construction pipeline projects, mainly due to the lesser people being required to mobilized to the worksites and doesn't have to be accommodated in hotels.

Does it show outstanding results on safety and/or environmental protection

Due to COVID-19 related travel restrictions it was not possible to rotate teams to mobilize AUT Operators to the overseas worksite. The consequences could have been a full stop of the project before it was completed, offshore spooling could not continue with lots of economical damages.

CORE services enables the AUT inspection data to be transferred in real-time to an AUT Operator at Applus+ RTD HQ office, interpretation is and reporting is managed in the same manner as it would have been done by the AUT Operator on the spool base worksite within the required cycle-time: however remotely. First commercial this CORE service has been applied with an instant success, COVID-19 didn't stop the new construction pipeline project.

Project description

Does it provide changes or new methods in the manner pipelines are installed?

CORE service is the first step in many to come towards more automated new construction pipeline projects in the next two years, COVID-19 is only acceleration the implementation.

Does it have positive feedback from the client?

More and more Clients are actively working on reducing manpower on new construction pipeline projects, driven by lowering costs / increasing safety / lowering Carbon footprint. CORE service is the first game changer step in achieving these targets structurally.

Does it have additional benefits?

Low operational costs / increased safety / lower Carbon footprint due to increases flexibility, lesser travel, no hotels, no restaurants, less overtime, less people at worksites.

CORE service is the first of many changes in the new construction pipeline market in the next few years!

ENERGY & INDUSTRY DIVISION PRESENTATION

2020



Applus+ at a glance

Applus+ is one of the world's leading Testing, Inspection & Certification companies.

It provides solutions for customers in all types of industries to ensure that their assets and products meet quality, health & safety, and environmental standards and regulations.



TIC



23,000+
people in 2019



€1,778
million total
revenue in 2019



70+
countries across
all continents

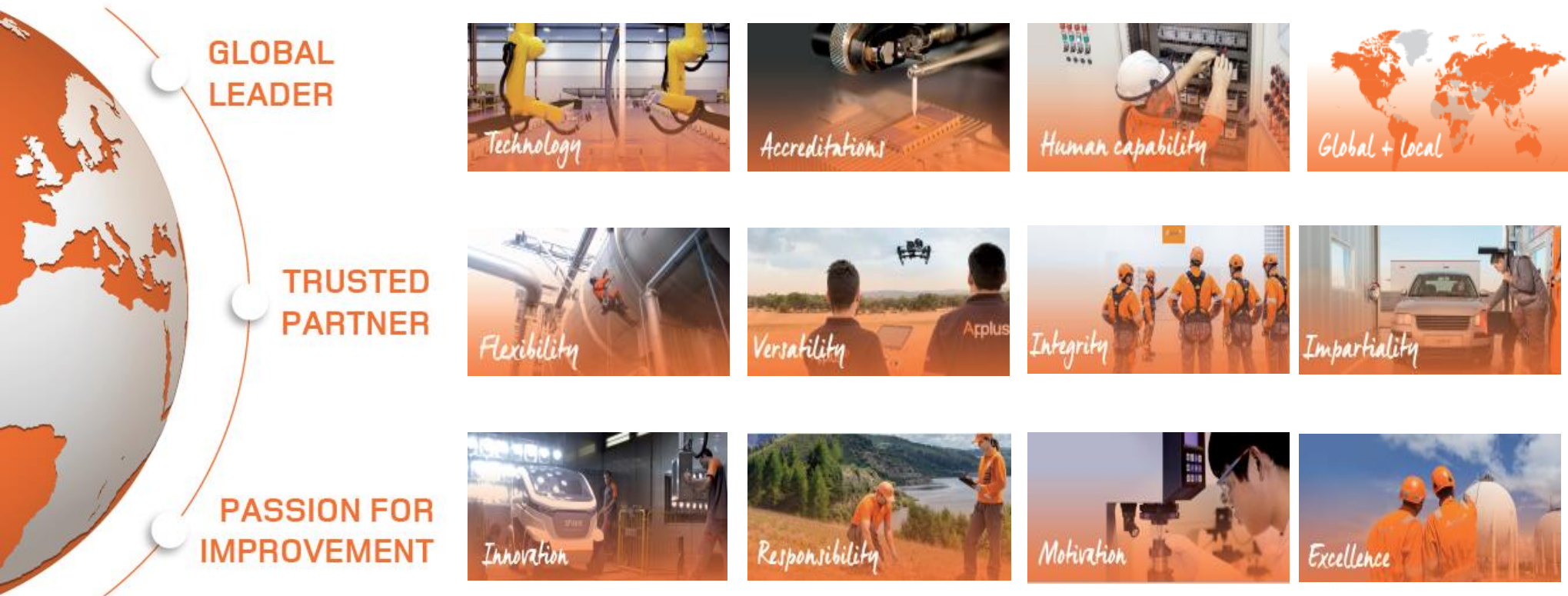


accredited
by major international
organisations

Our Brand

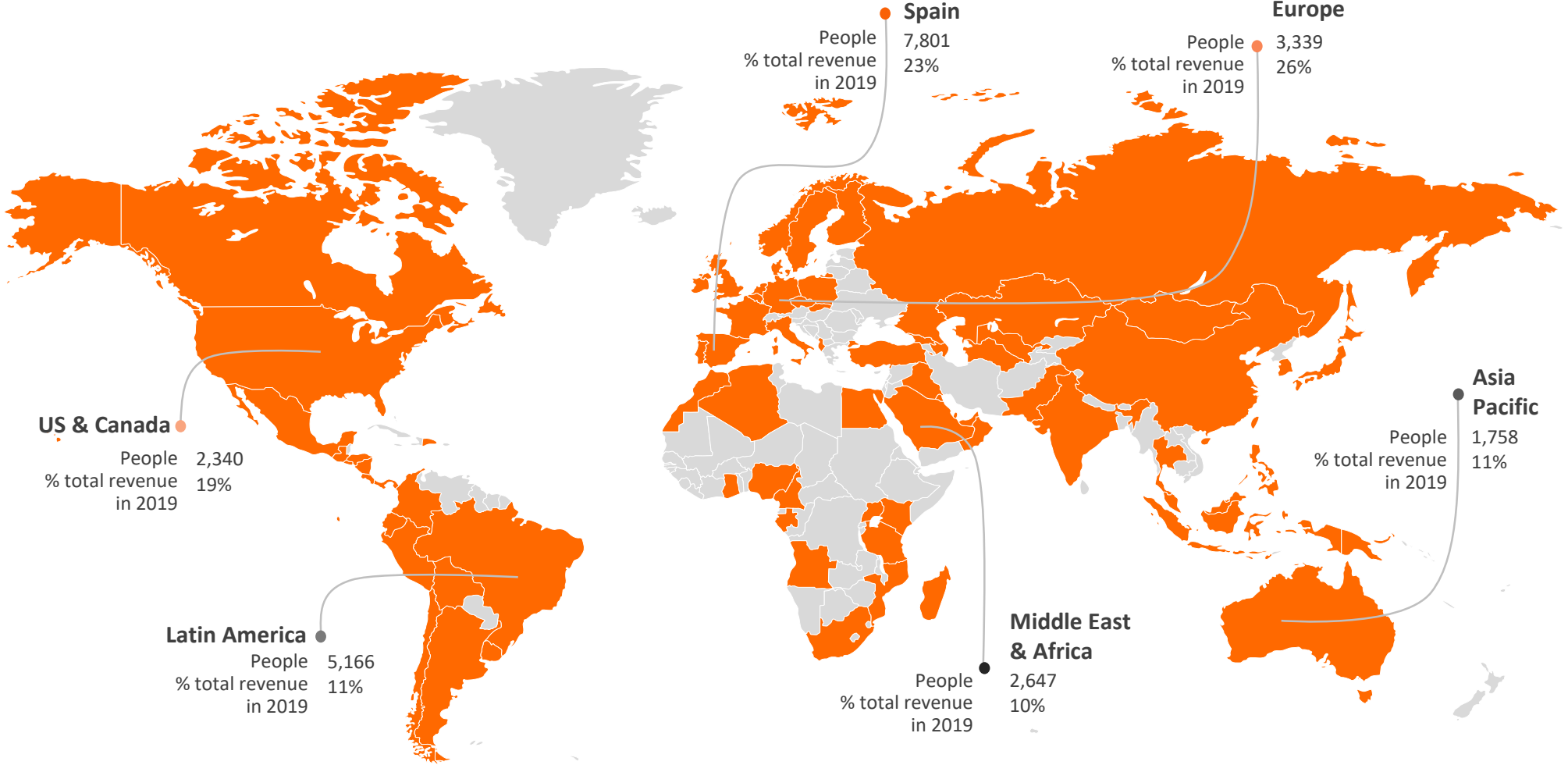


At Applus+, we respond to the TIC sector needs as a **global leader and a trusted partner, with passion for improvement.** These three pillars guide the business strategy across the Group's divisions. The attributes within each pillar support our long-term growth in international markets by improving our services and technology across the industry sectors in which we operate. Our brand promise captures the essence of these pillars: *TOGETHER BEYOND STANDARDS.*



To know more about our brand, access to the [Applus+ Brandclip video](#).

Geographical presence



- ALGERIA
- ANDORRA
- ANGOLA
- ARGENTINA
- AUSTRALIA
- AZERBAIJAN
- BAHRAIN
- BELGIUM
- BOLIVIA
- BRAZIL
- BRUNEI
- CAMEROON
- CANADA
- CHILE
- CHINA
- COLOMBIA
- COSTA RICA
- CZECH REPUBLIC
- DENMARK
- DOMINICAN REPUBLIC
- ECUADOR
- EL SALVADOR
- FINLAND
- FRANCE
- GABON
- GEORGIA
- GERMANY
- GHANA
- GUATEMALA
- HONDURAS
- INDIA
- INDONESIA
- IRAQ
- IRELAND
- ITALY
- JAPAN
- KAZAKHSTAN
- KENYA
- KUWAIT
- MADAGASCAR
- MALAYSIA
- MEXICO
- MOROCCO
- MONGOLIA
- MOZAMBIQUE
- NETHERLANDS
- NICARAGUA
- NIGERIA
- NORWAY
- OMAN
- PAKISTAN
- PANAMA
- PAPUA NEW GUINEA
- PERU
- PHILIPPINES
- POLAND
- PORTUGAL
- QATAR
- RUSSIA
- SAUDI ARABIA
- SINGAPORE
- SLOVAKIA
- SOUTH AFRICA
- SOUTH KOREA
- SPAIN
- SWEDEN
- TAIWAN
- THAILAND
- TANZANIA
- TURKEY
- TURKMENISTAN
- UGANDA
- UK
- UNITED ARAB EMIRATES
- URUGUAY
- USA
- UZBEKISTAN



Energy & Industry Division

The Energy & Industry Division is a world leader in non-destructive testing, industrial and environmental inspection, quality assurance and quality control, engineering and consultancy, vendor surveillance, certification and asset-integrity services.

Energy & Industry Division

Key figures

Energy & Industry Division employs

14,641 people 

 60+ in countries

Main services

- **Focus on industrial inspection and testing** in sectors as diverse as construction, power, oil & gas, telecommunication, aerospace and mining.
- Strong reputation built upon **innovation, technology** and **highly-qualified employees**.



€1,059.3

M revenue in 2019

 % revenue



Areas of expertise



Oil & Gas



Power



Construction



Aerospace



Maritime



Mining



Telecommunications



Other industries

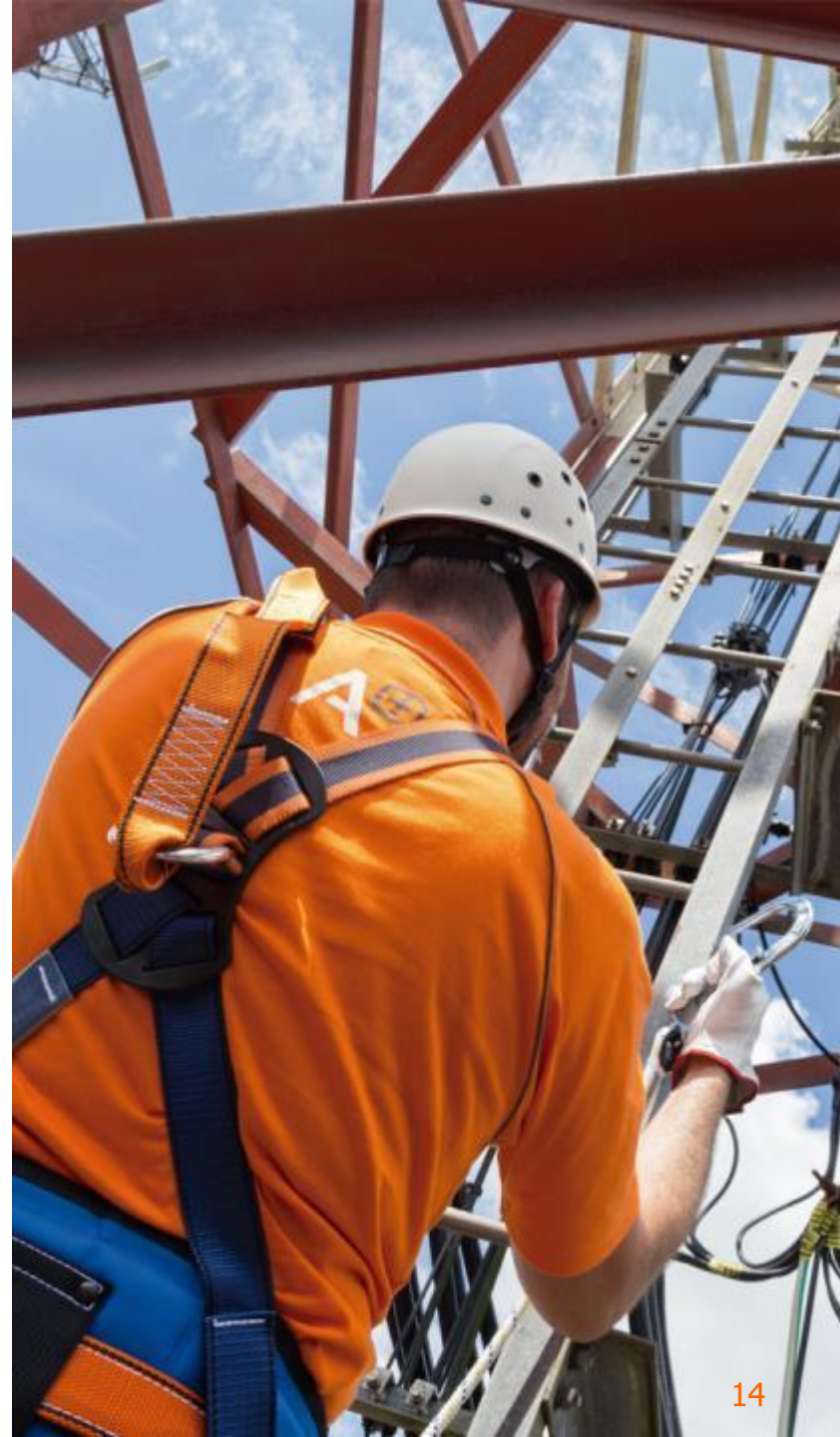


Government and public organisations



Services

- Engineering and Consulting
- Inspection
- Non-Destructive Testing
- Certification Services
- Supervision and QA/QC
- Technical Staffing
- Testing and Analysis
- Vendor Surveillance





Accreditations,
certifications and
memberships

Accreditations, certifications and memberships I*

Energy & Industry Division has the expertise and recognition to operate in international markets.



Czech Accreditation Institute



UK Accreditation Service



Spanish Accreditation Body



German Accreditation Body



Aerospace Accreditation Program



Colombian Accreditation Body



ABS Quality Evaluations



Testing construction materials



Joint Accreditation system of Australia and New Zealand



Achilles Joint Qualification System



Bureau Veritas



Trade Association for Rope Access (IRATA)



Det Norske Veritas



Institution of Occupational Safety and Health (IOSH)



ASME-accredited Authorized Inspection Agency (AIA)



Emirates International Accreditation Centre
ISO/IEC 17024 - 17020 - 17021



Italian Accreditation Service
ISO 17020



Emirates National Accreditation System



Approved Training Centre

* Extract of some accreditations, certifications & memberships

Accreditations, certifications and memberships II*

Energy & Industry Division has the expertise and recognition to operate in international markets.



Global Group
ISO 9001:2015
ISO14001:2015
OHSAS 18001:2007
ISO/TS ISO 29001:2010



Alberta Boiler Safety Association



Indian Boiler Regulations



National Association of Corrosion Engineers



American Society of Quality



American Society for Testing Materials



American Society for Testing Materials



National Association of Testing Authorities



Medic First Aid International



International Atomic Energy Agency



Lloyd's Register Quality Assurance



American Society for Nondestructive Testing



American National Standards Institute



Society for Maintenance and Reliability Professionals

* Extract of some accreditations, certifications & memberships

Applus⁺

Together
beyond
standards