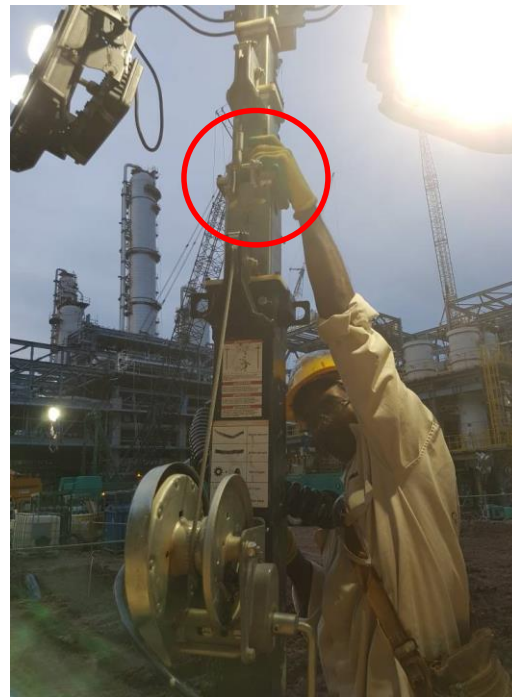


# P-5 INCIDENT LESSONS LEARNT – 2018/01

## Hand Injury – Medical Treatment Case



**IP grasped the cable and pulled to release the jam**



**IP's fingers were trapped between the cable and the lighting tower**

Date / Time

4 January 2018: 14:00 hours

Type / Impact

MTC – Fracture

Location

P-5 – Process Area 2160

Task

Removing Lighting Tower

### What Happened

A worker was freeing a cable of the extension mast of a temporary lighting tower.

As the worker pulled the cable to release the jam, the extension mast of the tower light suddenly retracted and trapped the fingers of the worker's left hand.

The IP suffered a fracture of the left hand forefinger

### What went WRONG

#### Underlying Causes

- Extended mast of the tower light retracted without warning.
- IP was manually attempting to free a jammed cable on the partially extended mast
- The tower light was left partially extended by the previous user when the control cable became jammed

#### Root Causes

##### TRAINING

The IP lacked competence – it was not usual practice for him to erect and dismantle temporary light towers.

##### HARDWARE

The equipment was not well maintained and the cable was not wound correctly onto the winch drum

##### COMMUNICATION

Ineffective HITS conducted by the supervisor – did not identify all of the risks.

### What we can do DIFFERENTLY

Ensure workers receive proper training for the tasks assigned to them.

Supervisor to ensure regular maintenance of all construction equipment is carried out.

Supervisor to ensure daily hazard identification (HITS) briefing identifies all hazards associated with the work activity

Conduct safety stand-down for learning and sharing details of the incident with other workers