

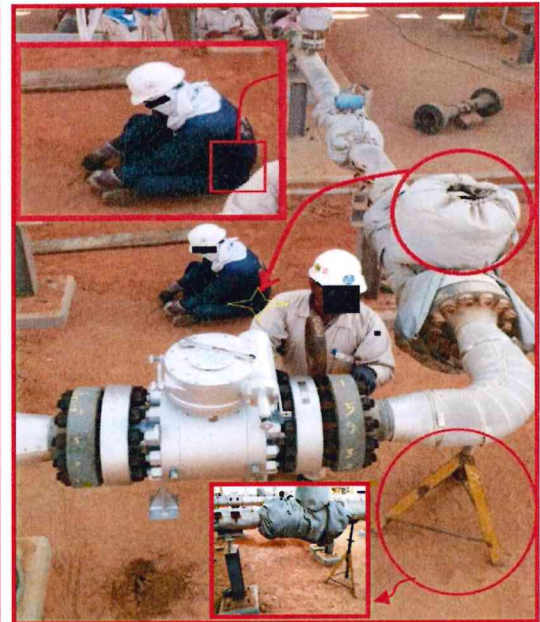
Pipe Spool Fell Down And Hit The Person

What Happened?

On Thursday 16th of November 2017 at approximately 02.00PM a GPS mechanical crew was performing demolishing of pump 65-P-00027C/E discharge valves to install new 6" valves & MOV at the discharge line. Whilst performing the activity an existing ball valve connected to the pipe was being unbolted to remove it for the installation of new 6" valve. As the last bolt of existing valve was removed the full length pipe got free, rolled from its support and partially fallen down from the end of valve which was unbolted. The butterfly valve which was already installed on the pipe hit the IP left side femur causing multiple fracture on his femur bone who was sitting and cleaning the bolts near to the pipe, placing himself under line of fire. IP was taken to peace land clinic for further investigation. X-ray was taken which revealed multiple fracture of IP's left femur. IP was transferred to Haima hospital for further diagnose and treatment.

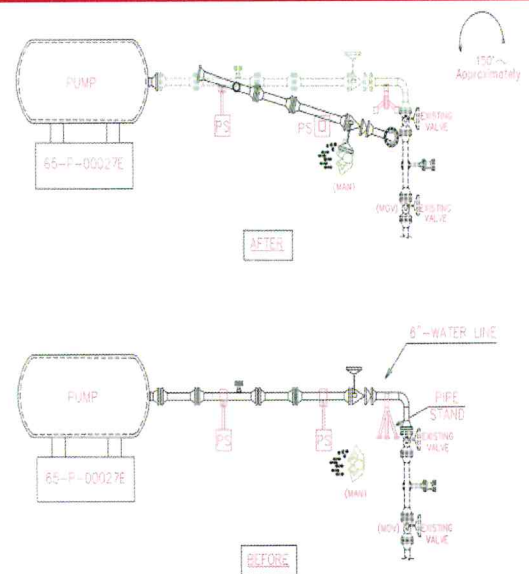
Cause of the Incident:

- IP was sitting and working in 'Line of Fire'.
- Lack of due care and attention.
- Failed to identify hazards.
- Inadequate Supervision.
- Inadequate temporary pipe support and its placement.
- Guide angle was missing on the permanent pipe support.
- Inadequate work planning.
- Congested work place.
- Noisy Work environment
- Lack of communication
- Failed to exercise Empowerment –SWA
- Many activities performed simultaneously in close vicinity.



Lesson Learned:

- Ensure proper planning of SIMOPs.
- Ensure adequate supervision at all times.
- Use lifting equipment to hold the pipe spool in such type of task.
- Ensure pipe support at right position.
- Readdress Empowerment (SWA) to stop unsafe work.
- Conduct Awareness programme on HIRA, SWA & Hazards awareness.
- Re-design the temporary pipe support.
- Ensure guide angles on permanent pipe support all the time.



Keeping the Workforce Informed

GPS HSE TEAM

