

SAFETY Alert



PREPARED BY: Corporate QHSE Dept.

N° 03/2019 Date: March 2019

OBJECT: FIRE INCIDENT IN CONFINED SPACE

DESCRIPTION

During the welding of a pup piece to a 31 Tons valve in a block valve station, a welder, got superficially burned on his face by a flame originated by a multiple torches' burner.

Burner is propane powered and it is used to keep the weld temperature.

The accident occurred because the multiple torches was not extracted from the pup piece and the welder went inside the pipe to control the weld's progress without closing the propane gas completely. The propane dispersed for few seconds into the pup piece while the I.P. still inside it.

The I.P. gave signal to proceed but when the welding restarted, some hot particles penetrated and set off a flame that hit IP's face.

CONSEQUENCES

- Stop of the activity and starting of the emergency response process;
- As a result of the injury was diagnosed the employee a second-degree burn to the face.

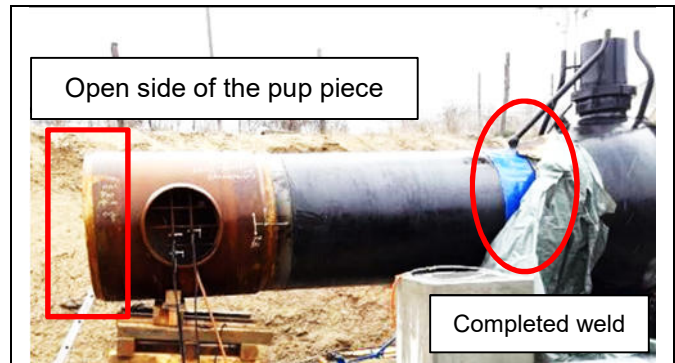
CAUSES

- Poor supervision;
- Poor confined space management: a confined space activity has been carried out wrongly, not taking care of the risk associated to the operation missing the specific confined space's devices (gas detector);
- Simultaneous operations not evaluated: the multiple torch has not been completely removed from the pipe during the checks of the weld; the beginning of the welding operation is not compatible with the presence of personnel inside the pipe. For a correct execution of the work, the torch has to be removed after the use and the beginning of the welding has to take place without personnel inside the pipe;

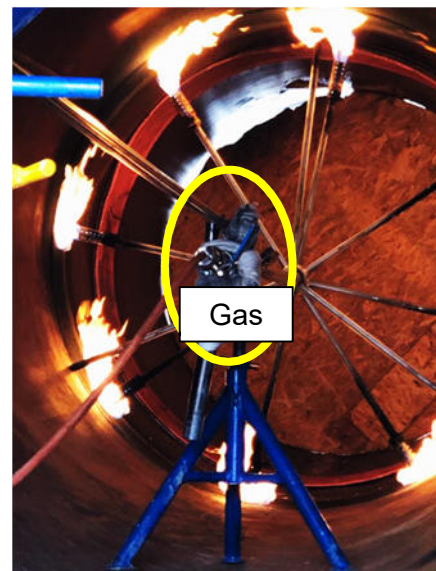
CORRECTIVE ACTIONS

Measures adopted in order to prevent the recurrence of a similar incident:

- Specific and approved Method of Statement for confined space is mandatory before executing any confined space activity.
- Execution of a TBT with all the members of the team related the confined spaces activities.
- Ensure that the confined space activities are identified and the related risk are properly assessed.
- Workers in confined space must have and know how to use the equipment for work in confined space. At least the gas detector devices.



The pup piece head was open but the valve side was plugged with a wooden plate in order to prevent welding flying sparks that can damage the valve's internal surface.



Multiple torches' device used to keep the proper temperature. The device was not properly extracted from the pipe and one the welders inadvertently didn't close the gas-valve of the burner completely.

RECEPTION BY THE PROJECT

WHICH ACTIONS IDENTIFIED TO BE IMPLEMENTED IN THE PROJECT:

Project Manager:

Signature:

HSE Project Manager:

Signature: