

LESSON LEARNT



PREPARED BY: Corporate QHSE Dept.

N° 11/2019 Date: November 2019

OBJECT REINFORCEMENT OF MANUAL WELDING TENTS

The welding tents are structures specifically designed and built for the automatic and manual welding phase of the pipelines in order to protect the weld pool from the elements, avoiding the appearance of defects to be repaired in the welds. Numerous episodes of damage, deformation and fragile breakage of these structures have been found in several SICIM construction sites during their operational life, especially during their positioning for welding and during the movement of the paywelder. In a construction site, therefore, modifications were planned and implemented on the manual welding tent in order to improve their structural solidity. The lifting point for attachment to the arm of the paywelder has also been modified, as its failure may lead to a serious lifting risk.

MAIN CONSEQUENCES

- Hazardous lifting;
- carrying out of unauthorized repairs on the ROW;
- Slowing down of activities.

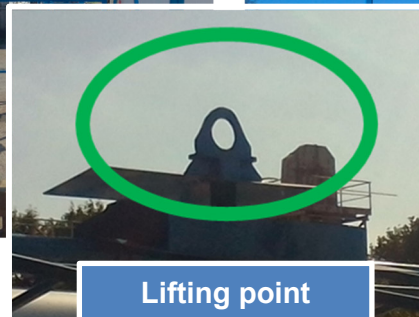
SOLUTION - IMPLEMENTED CORRECTIVE ACTIONS

1. Identification of all damaged welding tents;
2. Planning of modifications and subsequent implementation. The tents were gradually withdrawn and modified, starting from the most damaged ones;
3. Sharing of the technical drawing relating to the changes implemented with the competent departments;
4. Sharing the improvement action at corporate level and issuing a Lesson Learnt;
5. Modification of the structure of the tent before the mobilization.

Damage detected on site



Modification implemented



RECEPTION BY THE PROJECT

WHICH ACTIONS IDENTIFIED TO BE IMPLEMENTED IN THE PROJECT:

Project Manager:

Signature:

HSE Project Manager:

Signature: