

Advancing Safety and Sustainability  
**OUR SOLUTIONS HELP OUR CUSTOMERS**  
**BUILD A BETTER, MORE SUSTAINABLE WORLD.**



Three identical clear glass tumblers are arranged in a row on a reflective surface. The glass on the left is empty. The middle glass is filled with water to about the halfway mark. The glass on the right is filled with water to about the three-quarters mark. The background is a solid, dark grey.

80%

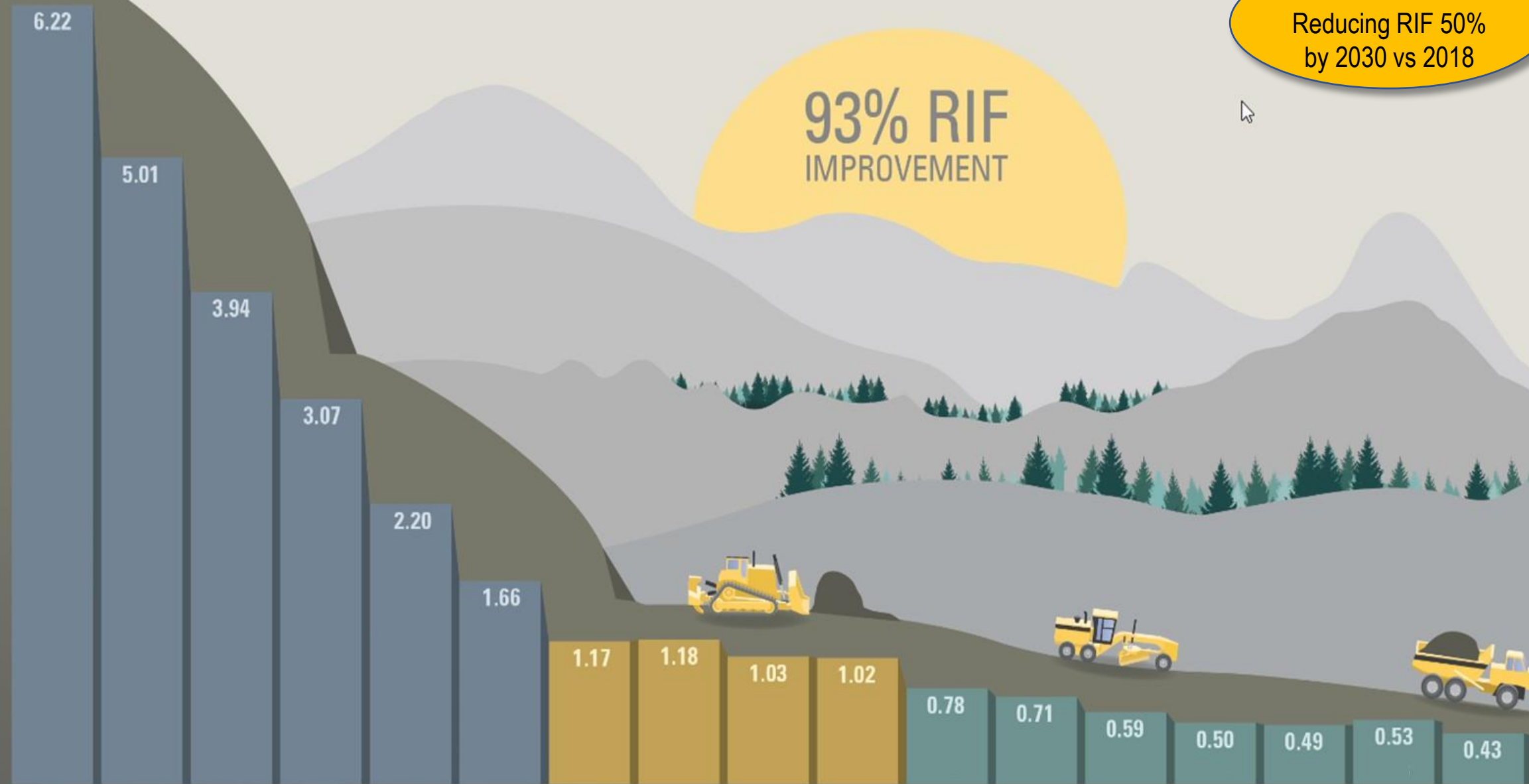
of us have

# Optimism Bias

“The tendency to believe that one is less at risk of experiencing a negative event as compared to others.”

6.50  
6.00  
5.50  
5.00  
4.50  
4.00  
3.50  
3.00  
2.50  
2.00  
1.50  
1.00  
0.50  
0.00

RECORDABLE INJURY FREQUENCY



93% RIF  
IMPROVEMENT

Committed to  
Reducing RIF 50%  
by 2030 vs 2018

# OUR VALUES IN ACTION

CATERPILLAR'S CODE OF CONDUCT



## Integrity

The Power of Honesty



## Excellence

The Power of Quality



## Teamwork

The Power of Working Together



## Commitment

The Power of Responsibility



## Sustainability

The Power of Endurance

# Code Of Conduct

## Living by The Code

How We Act  
and Lead

- We are One Caterpillar, One company
- United by these common principles
- A shared commitment to the highest standards of conduct
- We envision;
  - A work environment all can take pride in,
  - A company others respect and admire, and
  - A world made better by our actions.



# CREATING SAFE ENVIRONMENTS

It's A Marathon – Not A Sprint ...

- Culture Transformation
- Leadership Engagement
- Employee Engagement
- Technology



# Top Causes of Construction Injuries:

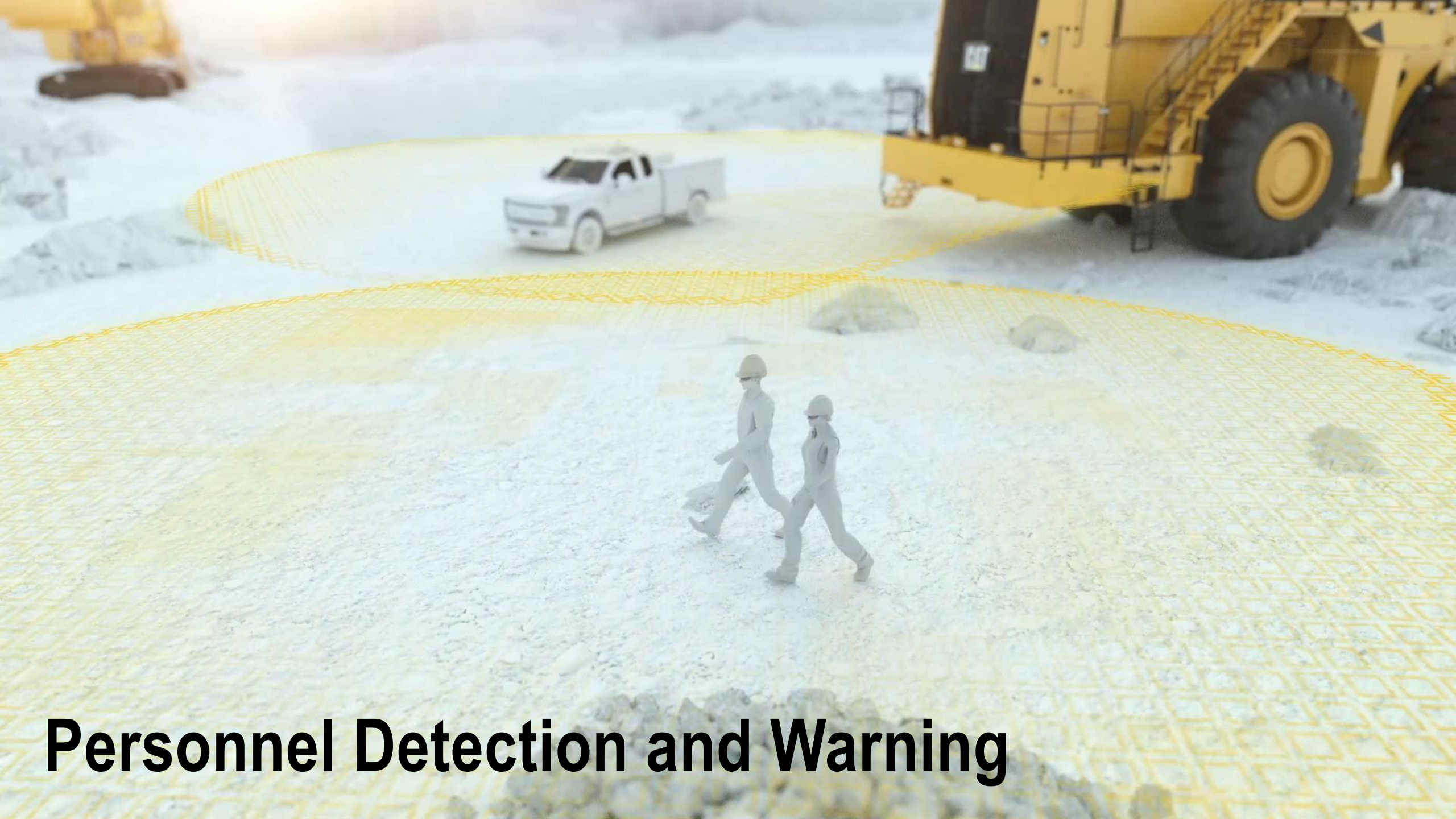
- Electrical Incidents
- Falls
- **STRUCK BY HEAVY EQUIPMENT**
- Trenching and Excavation





**Proximity Detection**  
**Increase Entire Jobsite Awareness**





# Personnel Detection and Warning



# Operator ID

## Prevent Unauthorized Operation

- **WHO**
- **WHAT**
- **WHEN**
- **WHERE**



# Fatigue Management:

## Fatigued Or Fit For Duty?









# COMMITTED TO BUILDING A BETTER, MORE SUSTAINABLE WORLD

**Sustainability:  
Part of who we are and  
what we do every single day.**



**ENVIRONMENTAL**



**SOCIAL**



**GOVERNANCE**

**Contributing to a reduced-carbon future by:**


- Supporting global efforts to mitigate climate change impact
- Reducing operational GHG emissions
- Investing in new products, technologies and services to help our customers achieve their climate-related objectives

## SUSTAINABILITY GOALS

## Our Commitment to Building A Better, More Sustainable World







Delivering Services, Technology  
and Machines for the Energy Transition

**PAST, PRESENT AND FUTURE**

**~\$5T**

potential incremental  
global spending,  
2021-2040





# Investing in Lower Carbon Advanced Power

## ESTABLISHED POWER SOURCES

More efficient  
and fuel-flexible



### Low Carbon Intensity Fuels

#### HVO + BRADLEY DEMOLITION

- Hydrotreated Vegetable Oil (HVO)
- **85% CO<sub>2</sub> reduction<sup>1</sup>** vs. conv. fuel

## HYBRID & ELECTRIC DRIVE

Established solutions coupled  
with new technologies



### Electric & Hybrid Powertrain

#### ADVANCED ELECTRIC DRIVE TECHNOLOGY

**35% CO<sub>2</sub> reduction** vs. other dozers

## EMERGING POWER SOURCES

Replace established  
power sources



### Batteries



### Fuel Cells

#### PRODUCTS IN DEVELOPMENT

- Battery/fuel cells tech deliver  
**100% CO<sub>2</sub> reduction** vs. conv. fuel

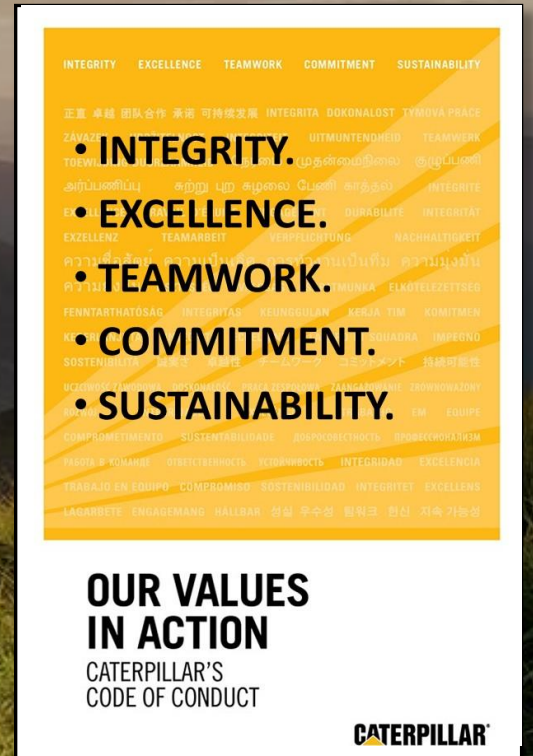


# Living by the Code

## Sustainability: The Power Of Endurance

We put **Sustainability** in action when We...

- Innovate to make our customers more efficient / productive
- Focus on environmental responsibility and preventing waste
- Support infrastructure development and access to energy
- Protect the health and safety of ourselves and others







**Safely Home.  
Every One.  
Every Day.**

**Perry Redman**  
Global Pipeline Group  
[Redman\\_perry\\_m@cat.com](mailto:Redman_perry_m@cat.com)

**CATERPILLAR®**