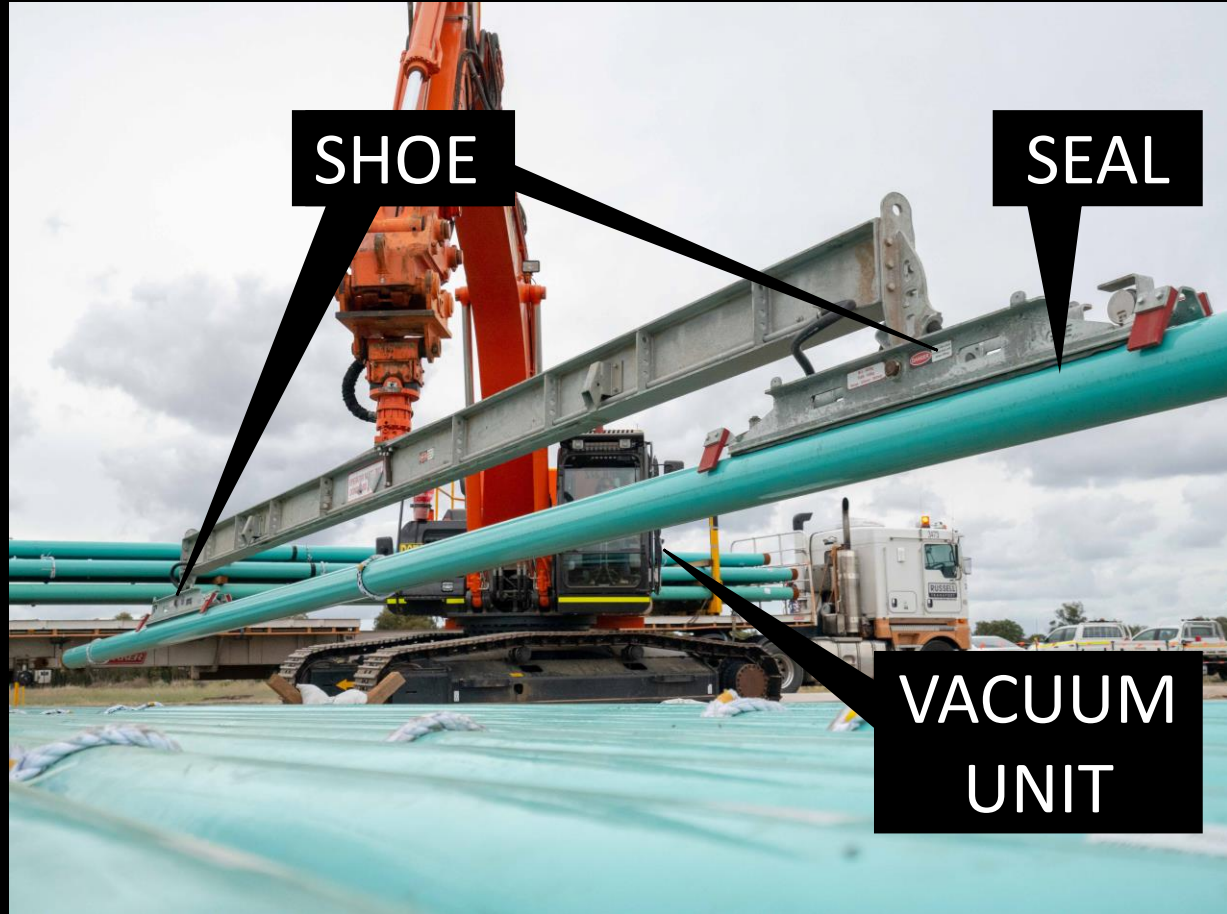


I HOPE THIS SUCKS!



BASIC VACLIFT ANATOMY



EXCAVATOR MOUNTED VACUUM
UNIT WITH DOUBLE SHOE



HITCH MOUNTED VACUUM
UNIT WITH SINGLE SHOE



UNDERSTANDING PAST INCIDENTS

OUTCOMES FROM INVESTIGATIONS;

- ENHANCED PRE-START INSPECTIONS
- SETTING REPLACEMENT SCHEDULES ON SEALING RUBBERS
- ADDITION OF A SECOND HOLD TEST MID SHIFT

ROOTCAUSE GENERALLY CATEGORISED **MACHINE MALFUNCTION** OR **HUMAN ERROR**

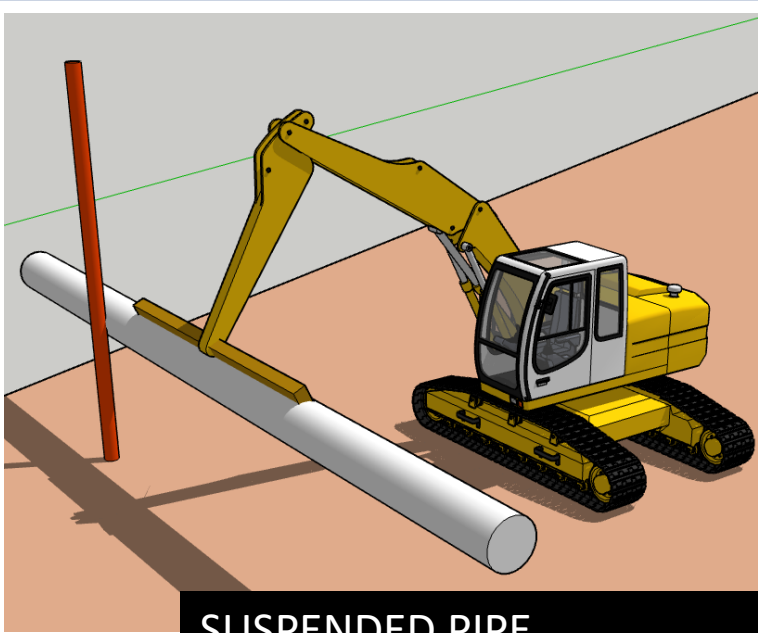
People are more likely to engage in risky behavior when security measures have been mandated

Sam Peltzman

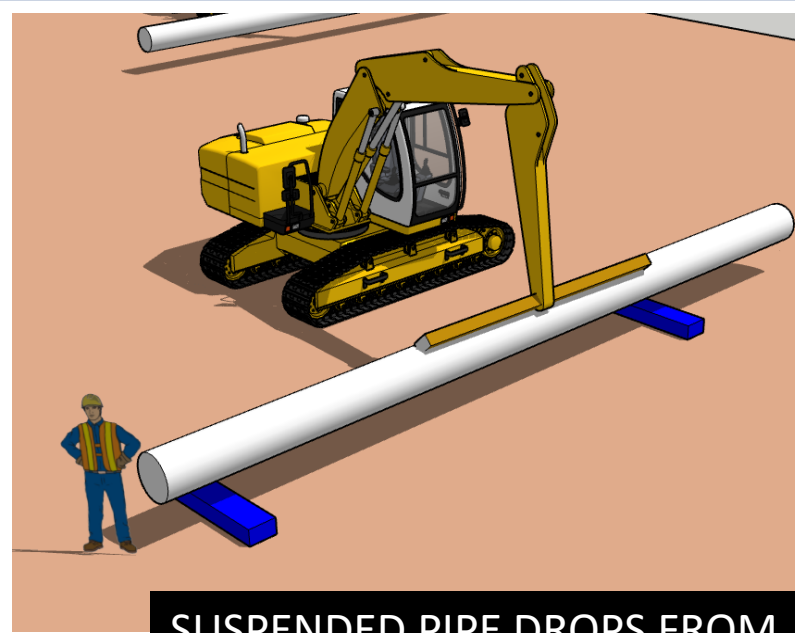
MAIN CAUSES RELATING TO PIPE DROP.

- THE OPERATOR DOES NOT WAIT FOR ADEQUATE VACUUM
- THE OPERATOR IS TOO AGGRESSIVE WITH PLACING THE VACLIFT ON THE PIPE AND DAMAGES THE RUBBER
- THE OPERATOR IS TRACKING WITH THE PIPE, CAUSING THE PIPE TO FLEX
- WHILE SLEWING WITH A PIPE, THE PIPE END CONTACTS AN OBJECT

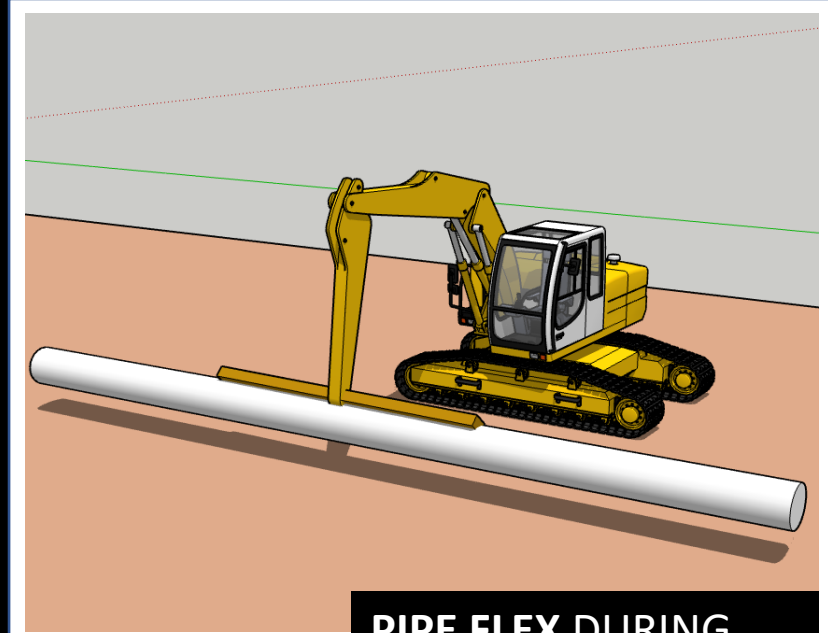
TEST SCENARIOS



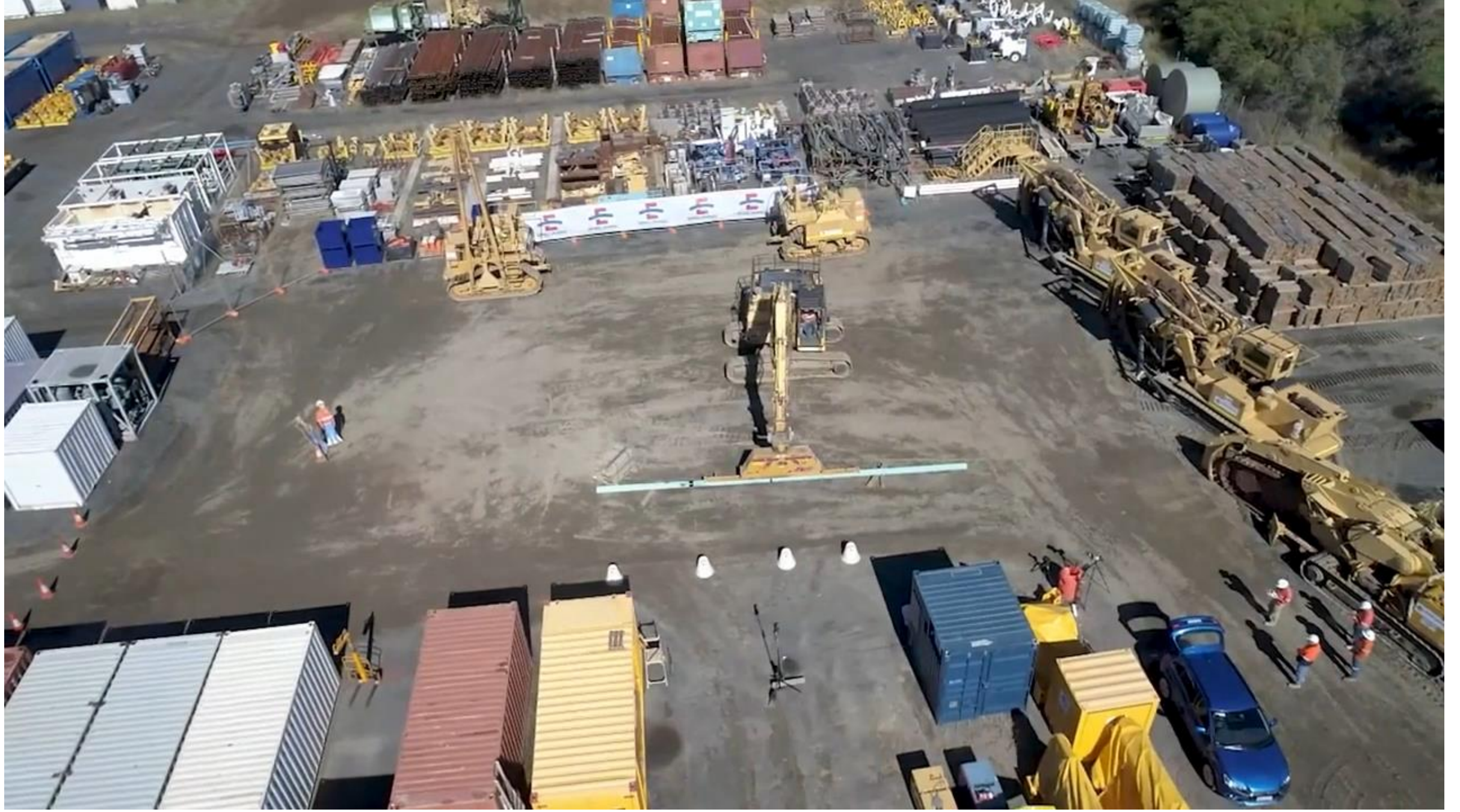
**SUSPENDED PIPE
CONTACTS A FIXED OBJECT**



**SUSPENDED PIPE DROPS FROM
HEIGHT DUE TO LOSS OF
SUCTION**



**PIPE FLEX DURING
TRACKING**





PIPE DROP CONDUCTED UNDER TEST CONDITIONS

* VAC-LIFT MAINTAINED SUCTION AND LIFT ON PIPE DURING TRIAL, THEREFORE PIPE WAS MANUALLY DROPPED TO REPRESENT INCIDENT



PARTNERING WITH INDUSTRY EXPERTS

LUIS GUEVARA
Vacuworx



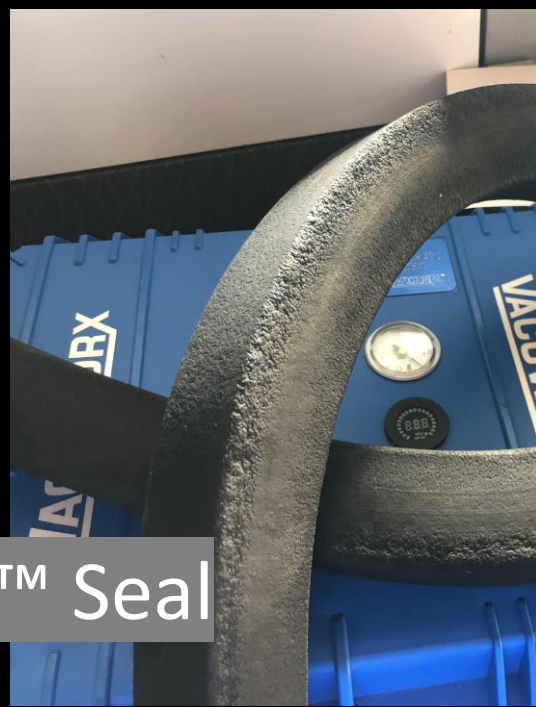
TRADITIONAL 50MM X 50MM GREY SEAL

- Two-piece construction glued together
- Open cell rubber – absorbs water and other fluids
- Low UV resistance
- Typically, 2000 to 4000 lifts





Tough™ Seal



HLok™ Seal



Vacuworx 50mm x 50mm Black Seal

- single-piece extrusion to Vacuworx specifications
- Closed cell rubber – does not absorb water or other fluids
- High UV resistance
- Typically, 6000 to 8000 lifts.

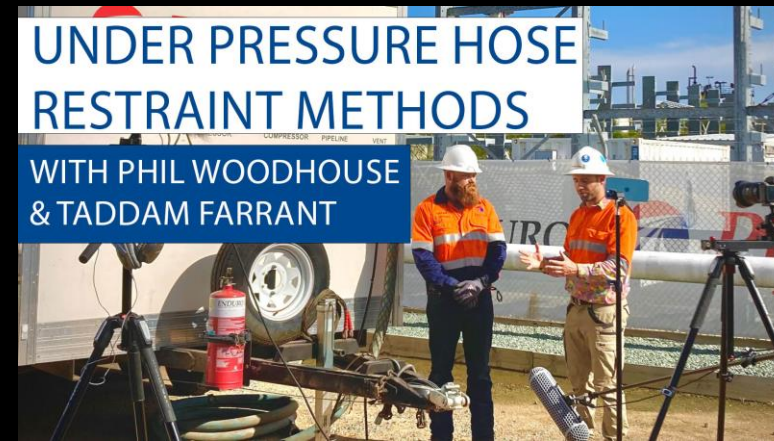
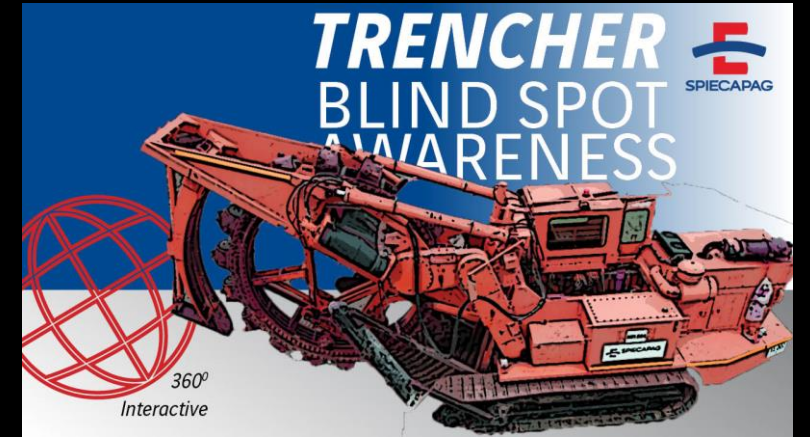


Vacuworx H-Lok Performance

- NGL project 323mm pipe using MC5 / RPM12 Vacuworx system
- Over 12,000 lifts with no loss of vacuum during pre-start test lifts
- Approximately 4 cents per lift in seal cost.



OTHER VIDEOS IN THE SERIES



Build Better
Together