

FAKE INVISIBLE CATASTROPHES AND THREATS OF DOOM

YOU WILL
PERISH
IN FLAMES

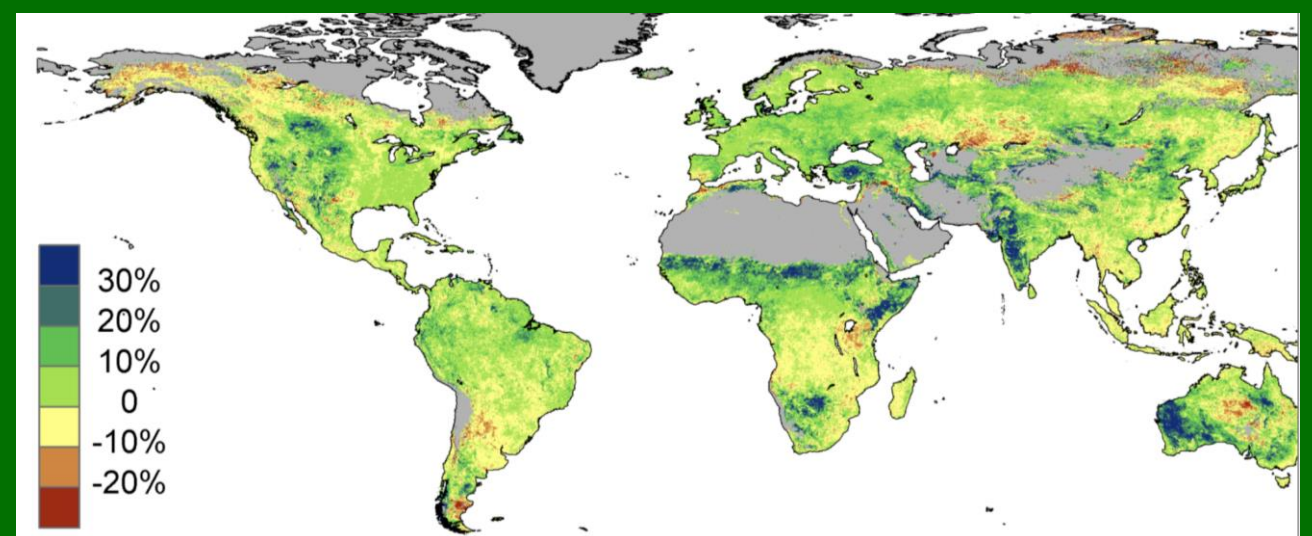


PATRICK MOORE

Patrick Moore, PhD
Ecosense Environmental
CO2 Coalition

There is no
“Climate Emergency”

IPLOCA
Vancouver, Canada
September 14, 2023



Greening of the Earth by CO2

Winter Harbour, Vancouver Island, 1952



My Home

















Why I Left Greenpeace After 15 Years



Greenpeace lost its humanitarian perspective and drifted into the lie that humans are the enemies of the Earth. Today they are Peddling Junk Science for Donations. It is Greenpeace that is the enemy of nature and civilization



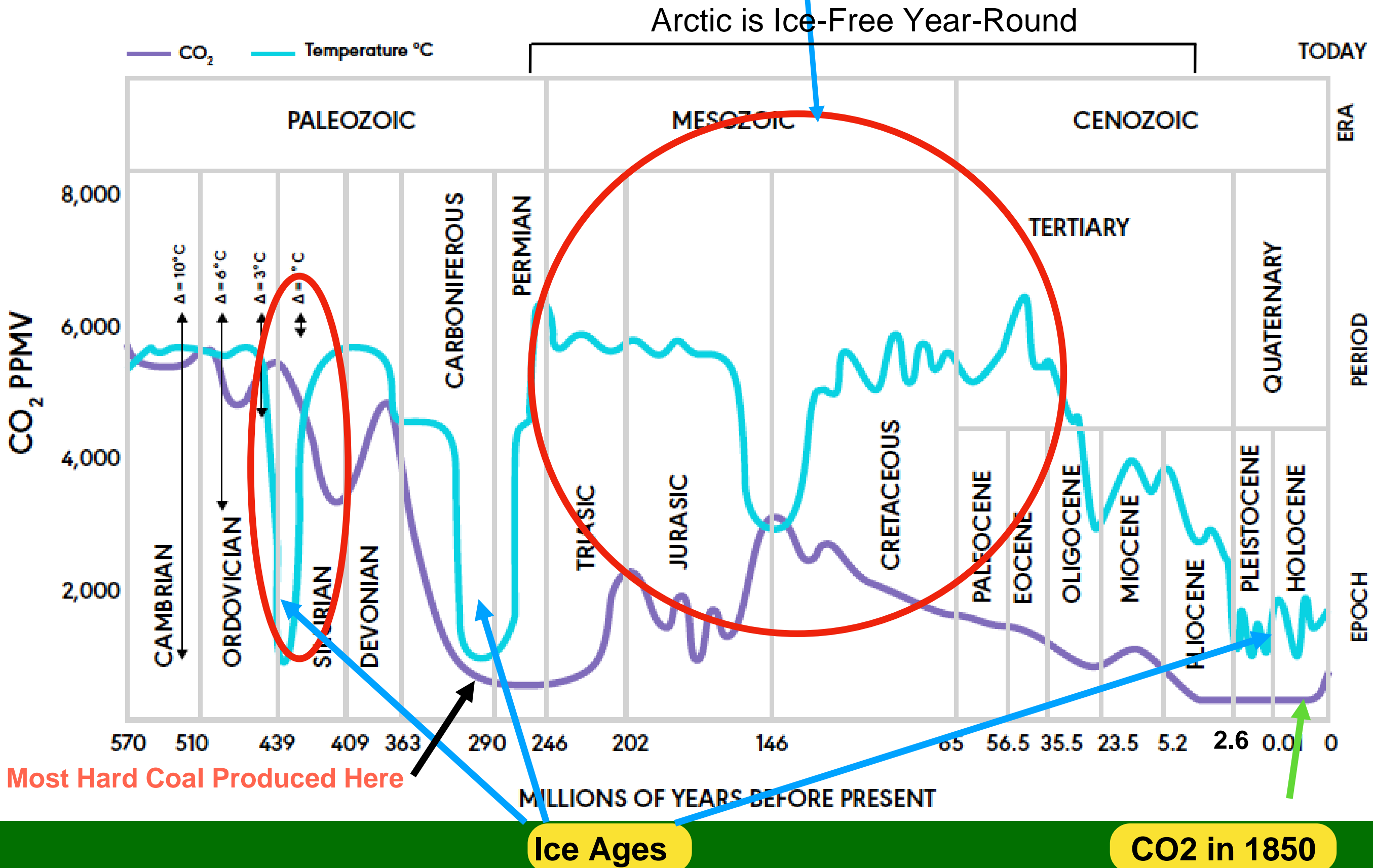
Greenpeace Betrays Founders to Peddle Junk Science

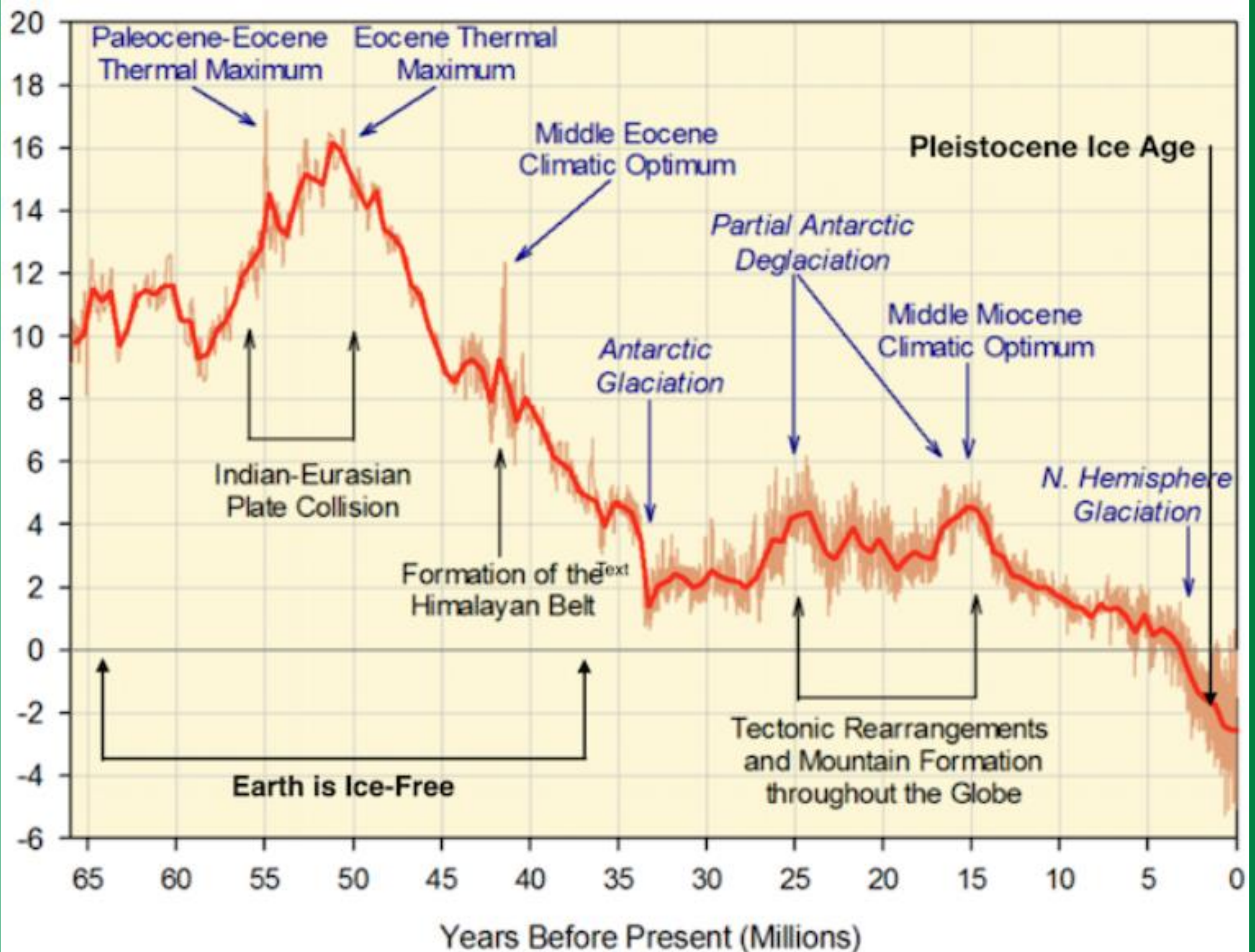
by Dr. Patrick Moore

There has been a 400% increase in whale deaths since 2016. Greenpeace has sided with the mechanical wind turbines over the living whales whose ocean habitat the wind machines will occupy.

CO₂ & Temperature Negatively Correlated for 200 Million Years.

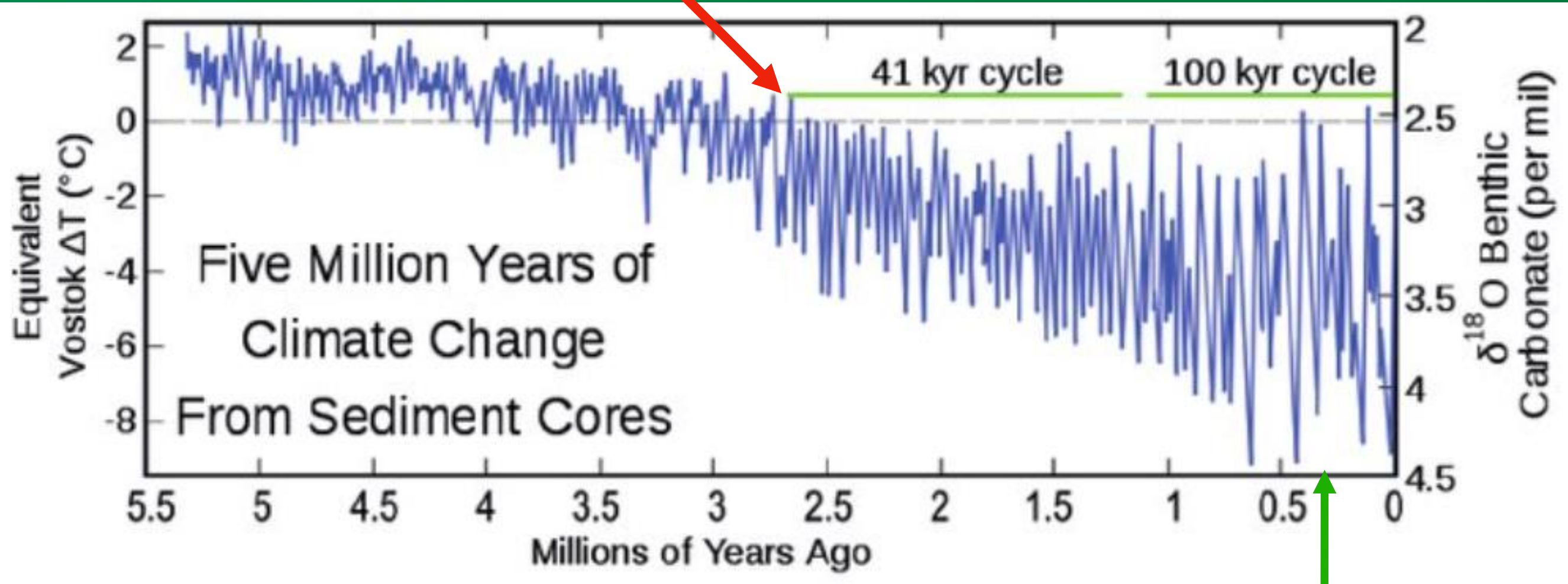
Geological Timescale: Concentration of CO₂ and Temperature Fluctuations





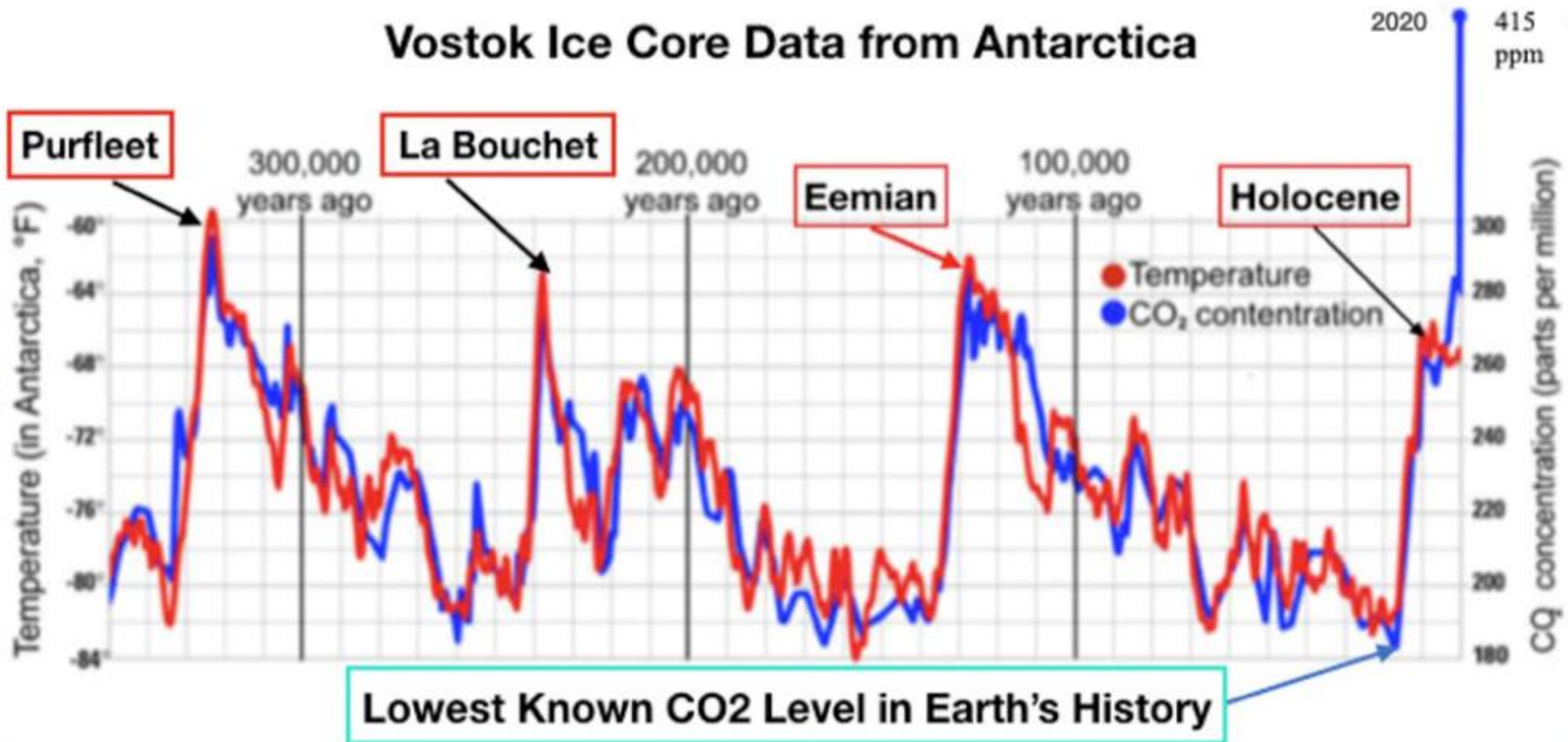
Global Deep Ocean Temperature for the Past 65 Million Years.
The Y-axis indicates variance from present temperature in degrees C.

Onset of Pleistocene Ice Age

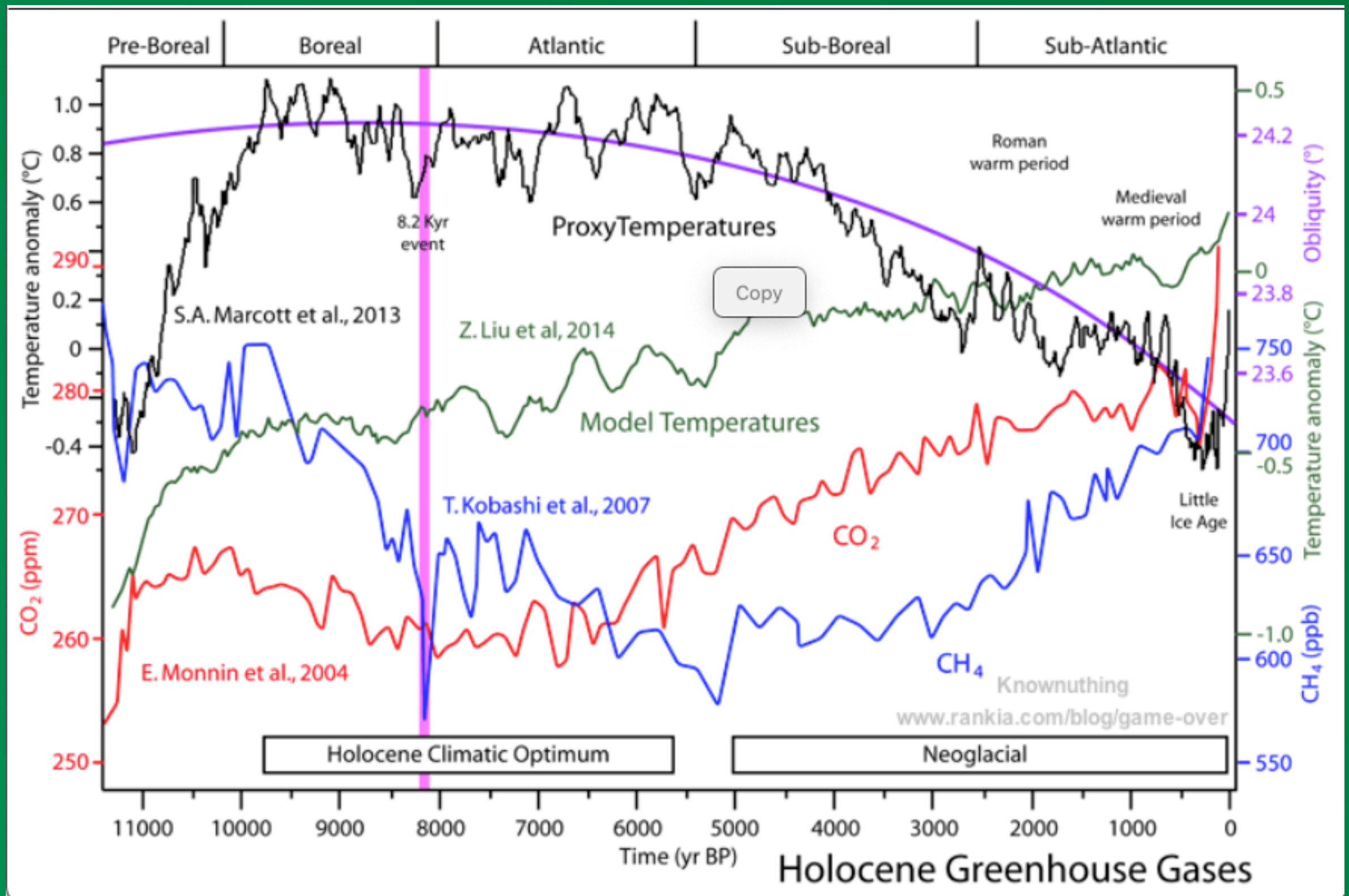


Homo Sapiens Evolved

Vostok Ice Core Data from Antarctica



There is no Indication that Global Temperature will Shoot up in Response to the Large Increase in CO₂ from Human Emissions. Note the Three Previous Glacial Maximums were Warmer than this One

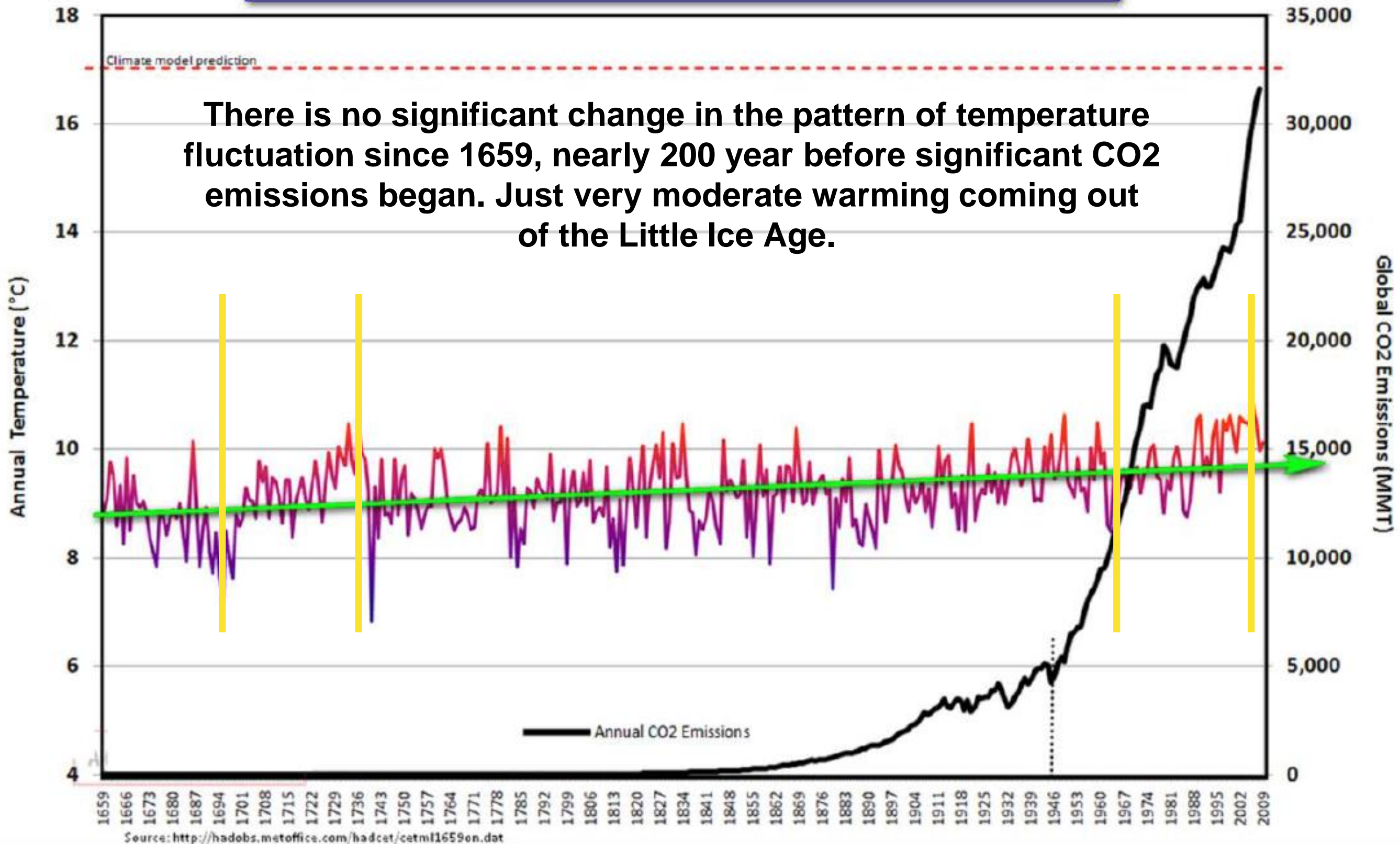


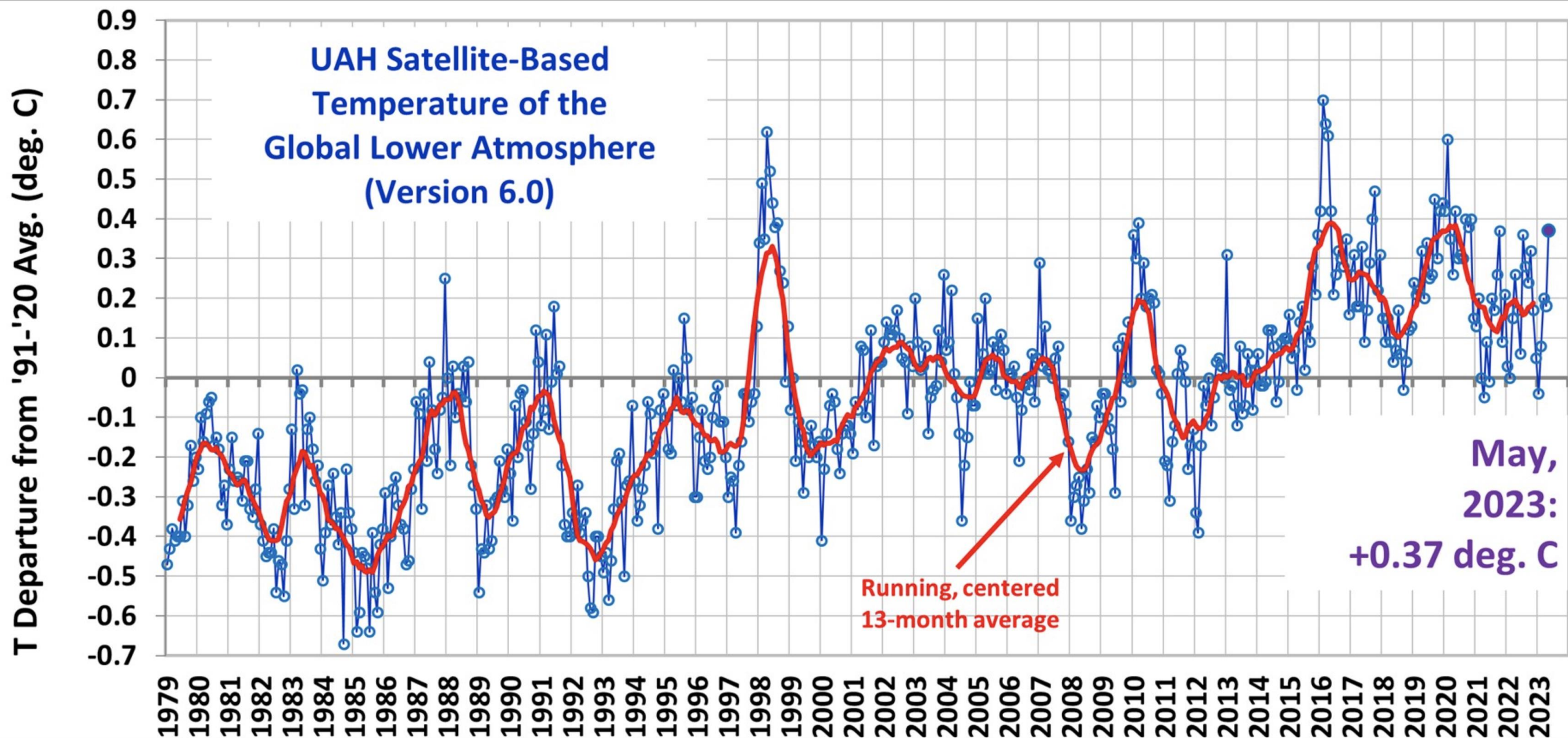
The Holocene Interglacial Period - Temperature and Greenhouse Gases

Central England Temperatures & Global CO2 Emissions

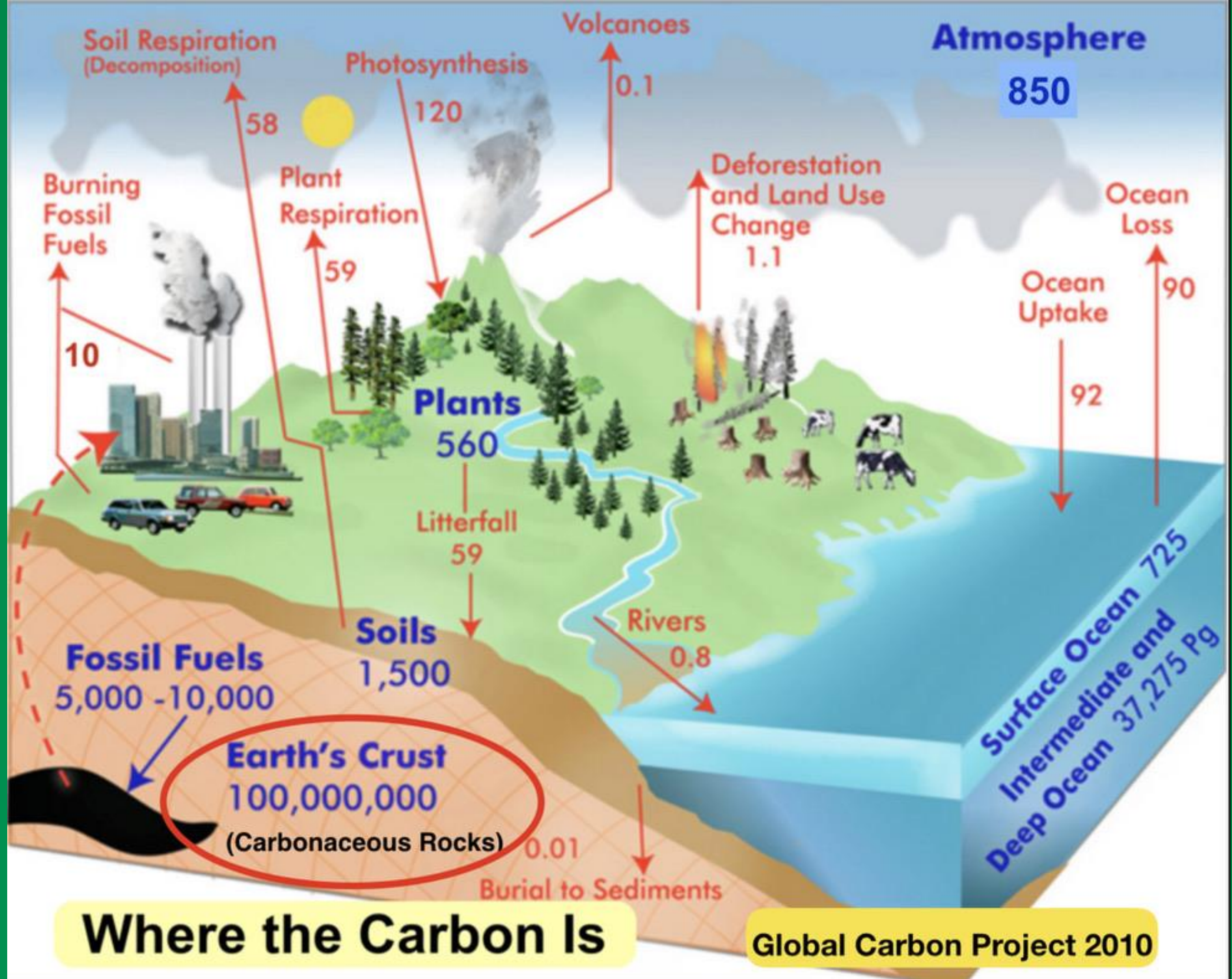
From 1659 to 2009

There is no significant change in the pattern of temperature fluctuation since 1659, nearly 200 year before significant CO2 emissions began. Just very moderate warming coming out of the Little Ice Age.





January and April 2023 were slightly cooler than the average 1991-2020
There is no “runaway greenhouse effect”. Just a lovely bit of warming.

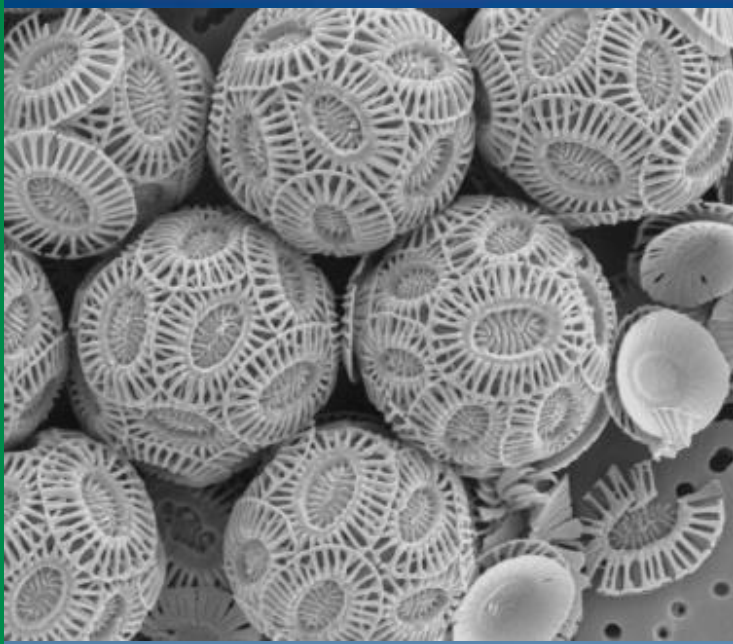




500 - 550 million years ago, many soft species ruled the seas



100,000,000 Billion Tons of Carbon as CO₂ has been Absorbed from the Oceans and Air by Marine Calcifying Species and turned into Limestone. When we Make Cement we are simply returning CO₂ to where it Came From.



**The White Cliffs of Dover stretch for 14 miles along the English coast
They are entirely composed of the shells of microscopic coccolithophores -
an algae that feed on CO₂ in the world's oceans**



Coral reefs have produced about 50% of all the CaCO_3 that has become chalk, limestone, dolomite, and marble - These rocks are of life-origin



There are more than 100,000 species of mollusks, including shellfish, octopi, and squid. Nearly all produce CaCO_3 shells



Lush ancient forests evolved in the Carboniferous period. Prior to that all vegetation was limp and confined close to the ground. The development of woody stems changed that forever. Global biomass increased greatly.

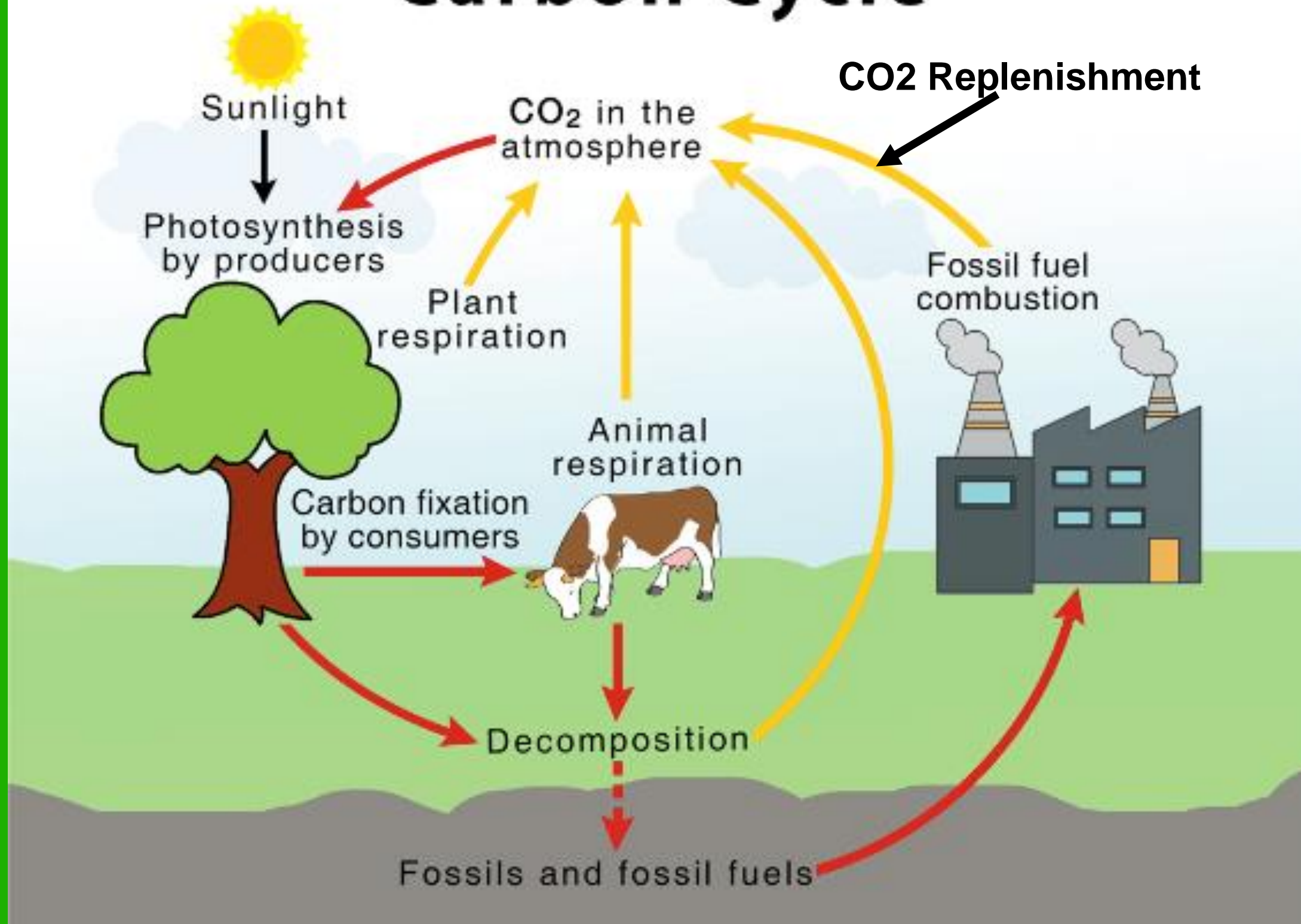


About 50% of known coal reserves were laid down during the Carboniferous and Permian Periods, coincident with the evolution of trees, the stems of which are made from cellulose and lignin.



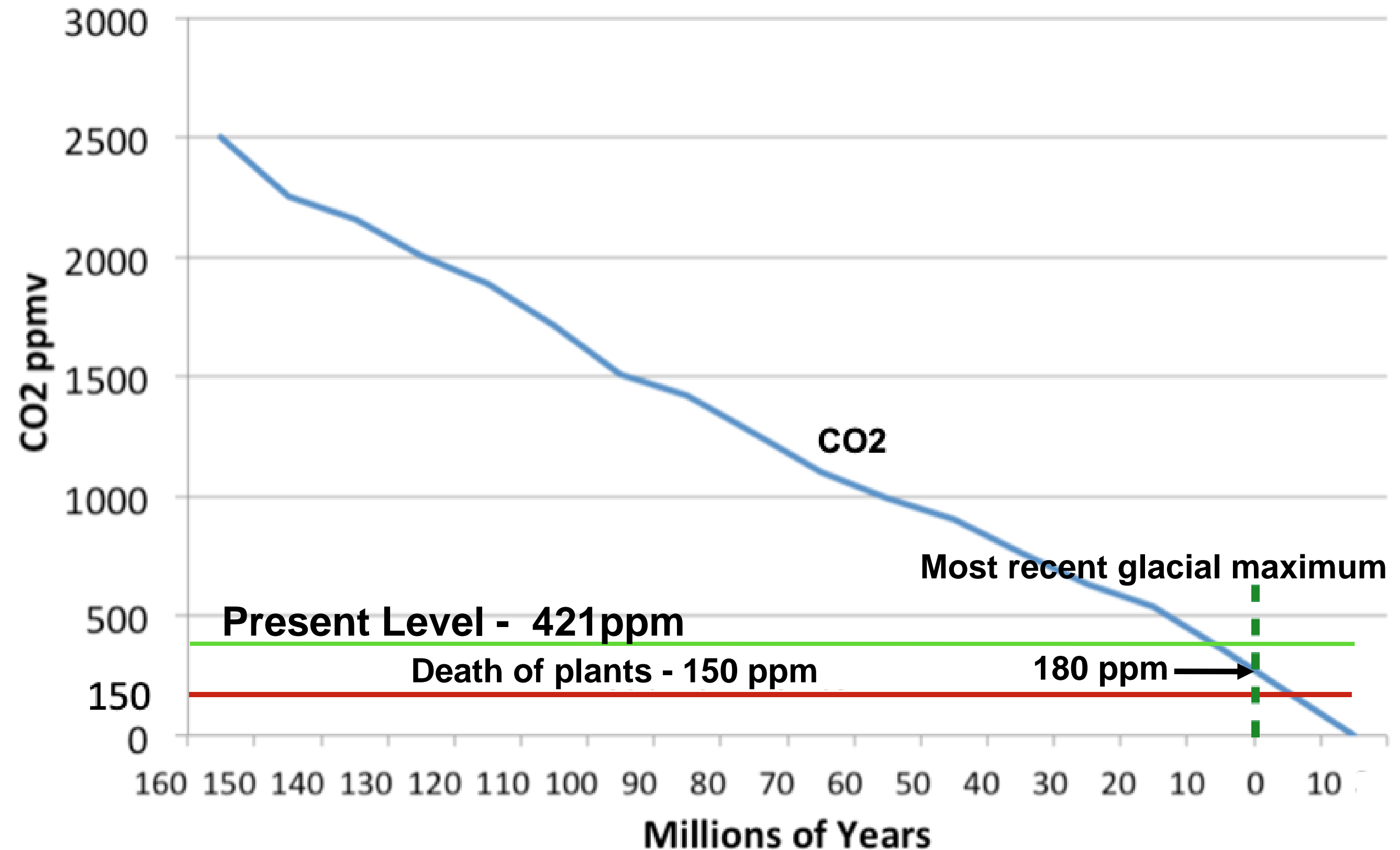
Trametes versicolor- possibly first species to produce lignase to digest lignin in wood, thus curtailing coal production

Carbon Cycle



Every molecule of CO₂ we emit to the atmosphere from burning fossil fuels and cement production came from the atmosphere and the oceans in the first place. It is not an addition, it is a replenishment

Projected CO2 Level in Absence of Human Emissions



It's True—You Really Should Talk to Your Plants

Especially If You're a Woman

By [COLLEEN VANDERLINDEN](#) | Updated on 02/17/22



 The Spruce / Leticia Almeida

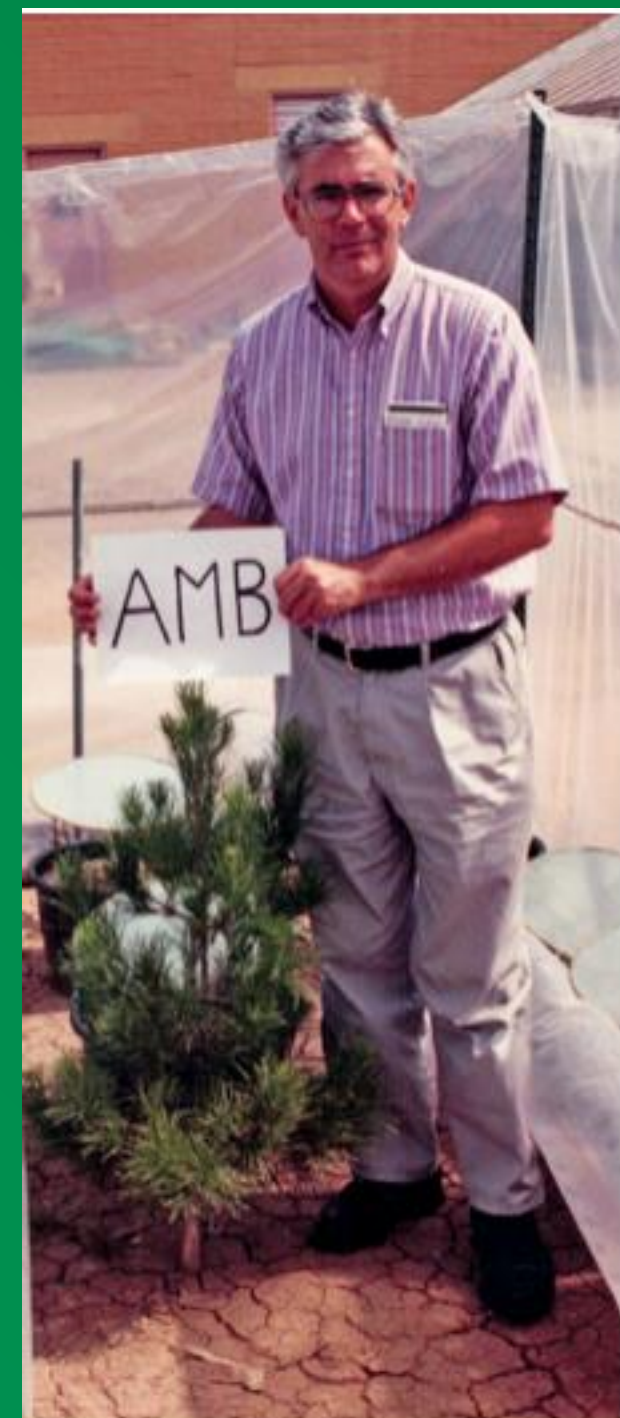
In a study performed by the Royal Horticultural Society, researchers discovered that [talking to your plants](#) really can help them grow faster.^[1] They also found that plants grow faster to the sound of a female voice than to the sound of a male voice. Other studies have experimented with different sound levels and even the kinds of things that are said to plants. Do they respond better to compliments or insults?

Royal Horticultural Society Study

In the month-long study, the Royal Horticultural Society recorded 10 people, including both men and women, reading from either literary

It's not about talking!
When you get up close
and talk to your plants
you are breathing up to
50,000 ppm (5%) CO2
on them!

It's their main food!
Perhaps the women get
closer than the men!!



385 ppm CO₂



535 ppm CO₂



685 ppm CO₂



835 ppm CO₂

**Controlled Experiment with CO₂ Increased
Above Ambient Levels as it was in 2009**



A CO2 Generator Turns Natural Gas into CO2 and Greatly Increases Plant Growth and Productivity



Claim: Polar Bears Will Become Extinct Due to Climate Change

Polar Bears would not Exist if it weren't for Climate Change



Maximum weight
1,000KG (2,205LB) 400KG+ (882LB)

Shoulder height
1.6M (5.2FT) 1.1M (3.5FT)

Average lifespan
15-18 YEARS 20-25 YEARS

Maximum running speed
40KM/H (25MPH) 56.3KM/H (35MPH)

Paw size
30CM (12IN) 20-25CM (8-10IN)
WIDE WITH 5 CLAWS WIDE WITH 5 CLAWS



Streamlined form

Polar bears are adapted to their marine lifestyle. They have longer necks and narrower skulls than grizzly bears, creating an overall streamlined shape that enables efficient swimming.



Shoulder hump

Grizzlies have a distinctive shoulder hump made of strong muscle that enables them to be powerful diggers. Polar bears are also known to dig snow dens, but don't have humps.



Claw comparison

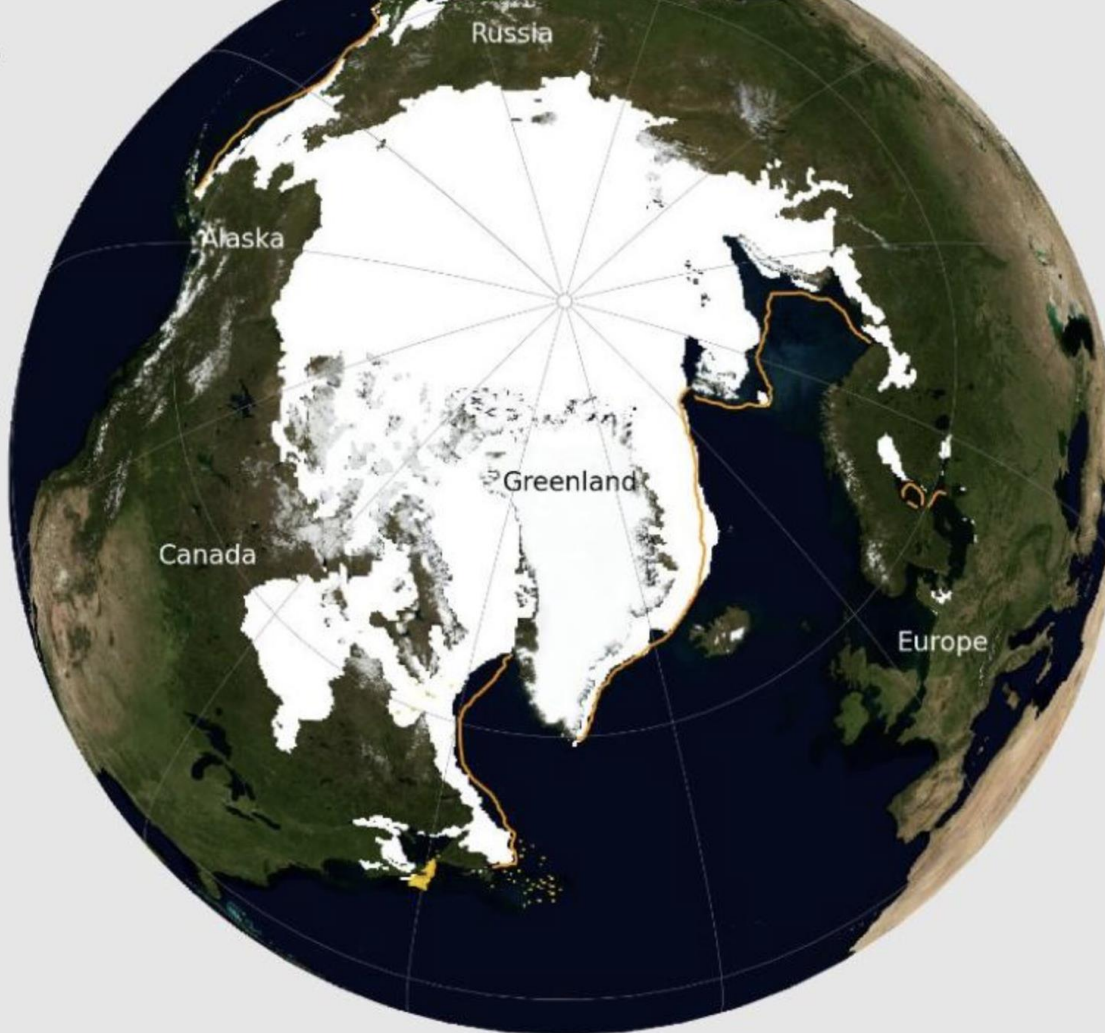
Grizzly bears have much longer claws than their Arctic counterparts. Comparable to the length of a human finger, they use their claws to dig dens, root out vegetation and swipe at salmon.

Polar Bears descended from Brown Bears, a case of divergent evolution due to geographical isolation and different habitats

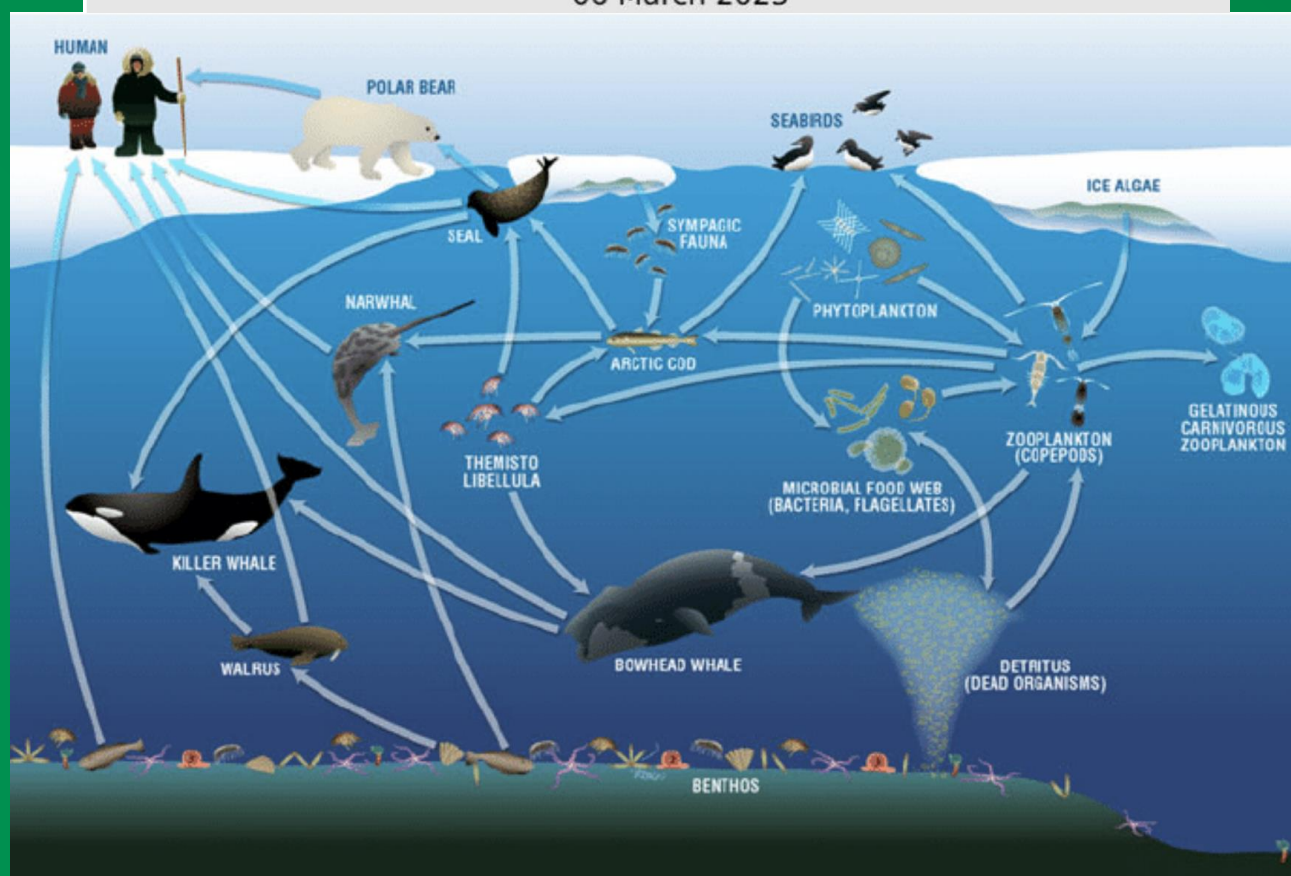


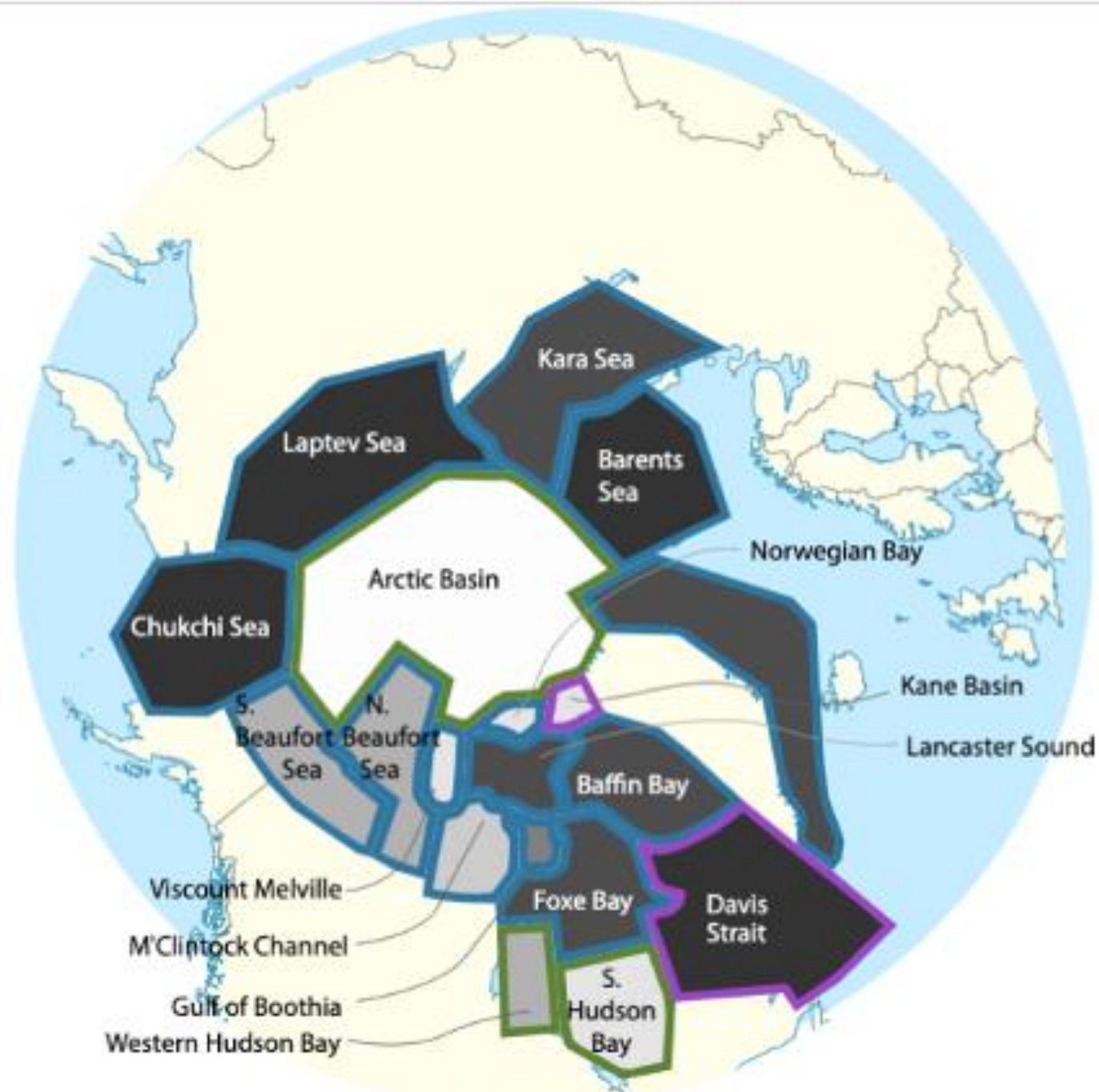
THIS IS WHAT CLIMATE CHANGE LOOKS LIKE.

National Geographic, December 2017

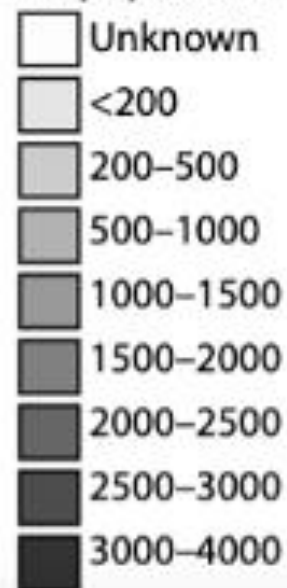


06 March 2023

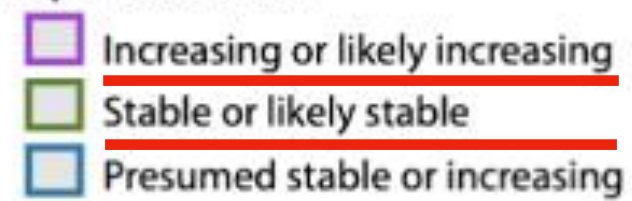




Subpopulation size



Population trend



1973 Population

6-8,000

2022 Population

30-50,000



85 people died in the Camp Fire in Paradise, California in November 2018. This is a textbook example of how not to build a community in a forested landscape.



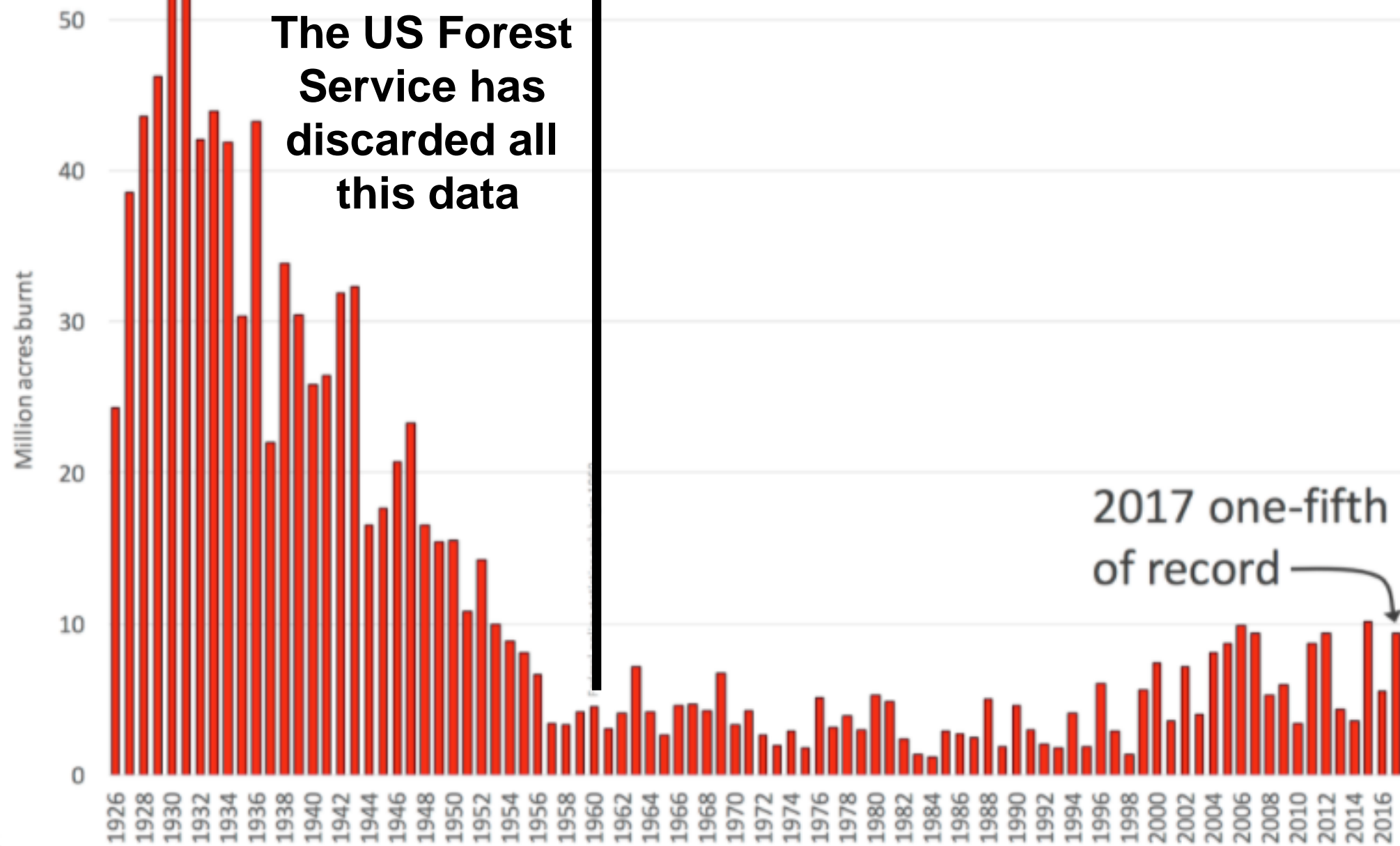
Central Park is an excellent example of how to manage an urban forest. No pitchy conifers such as pines, spruce, and larch. No buildup of dead wood. Lots of open space. Pretty simple. Will not cause wildfire.



If dead woody debris is allowed to build up it dries out and becomes susceptible to creating an inferno.

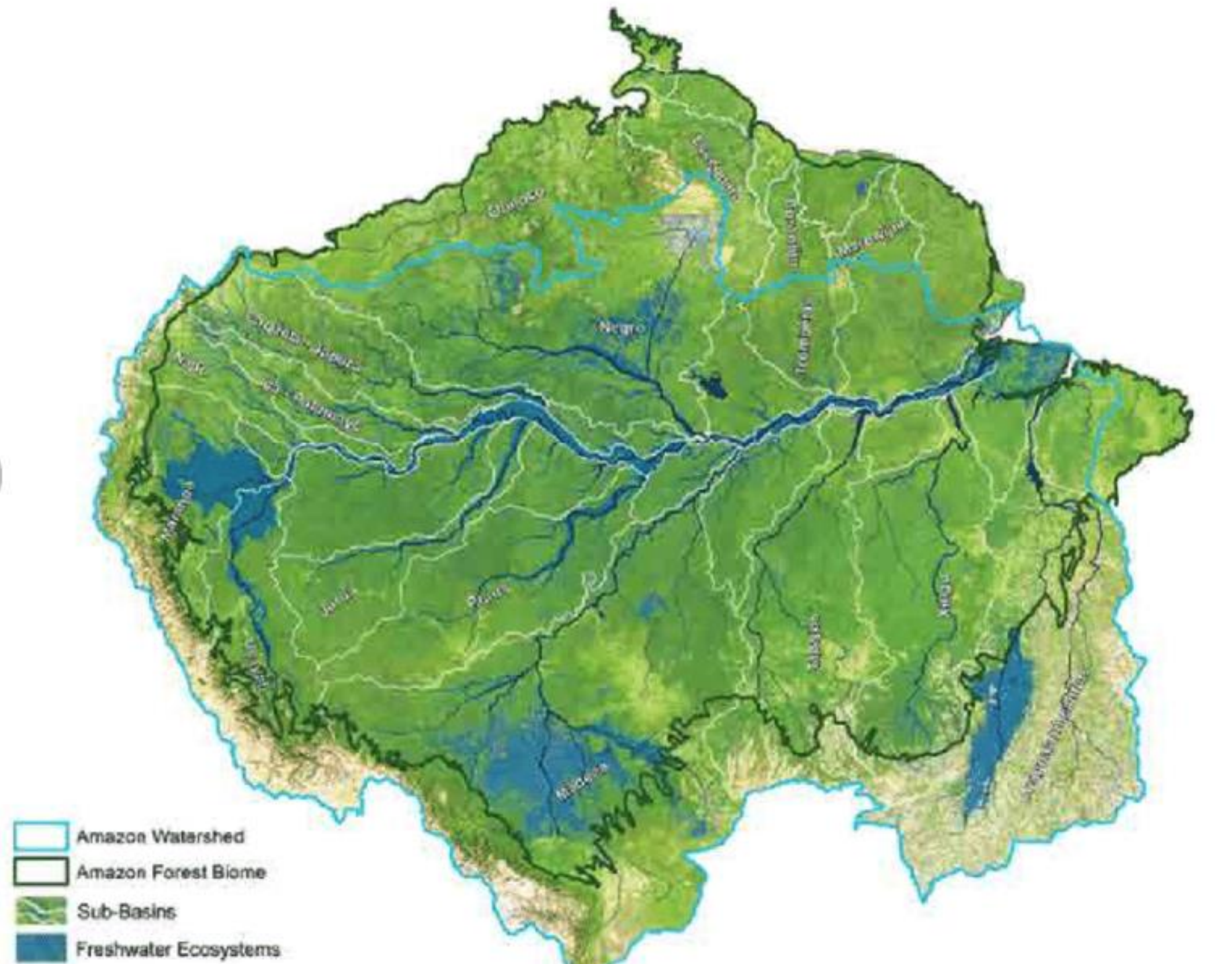
When wood was the primary fuel the dead wood around communities was collected for cooking, heating, and industry.

US Forest Area Burned 1926-2017





By 1750 when wood was the only major fuel for heating, industry, and cooking, the forested area in Europe was reduced to less than 10%. Today 43% of Europe is forested. Many dry regions were never forested.

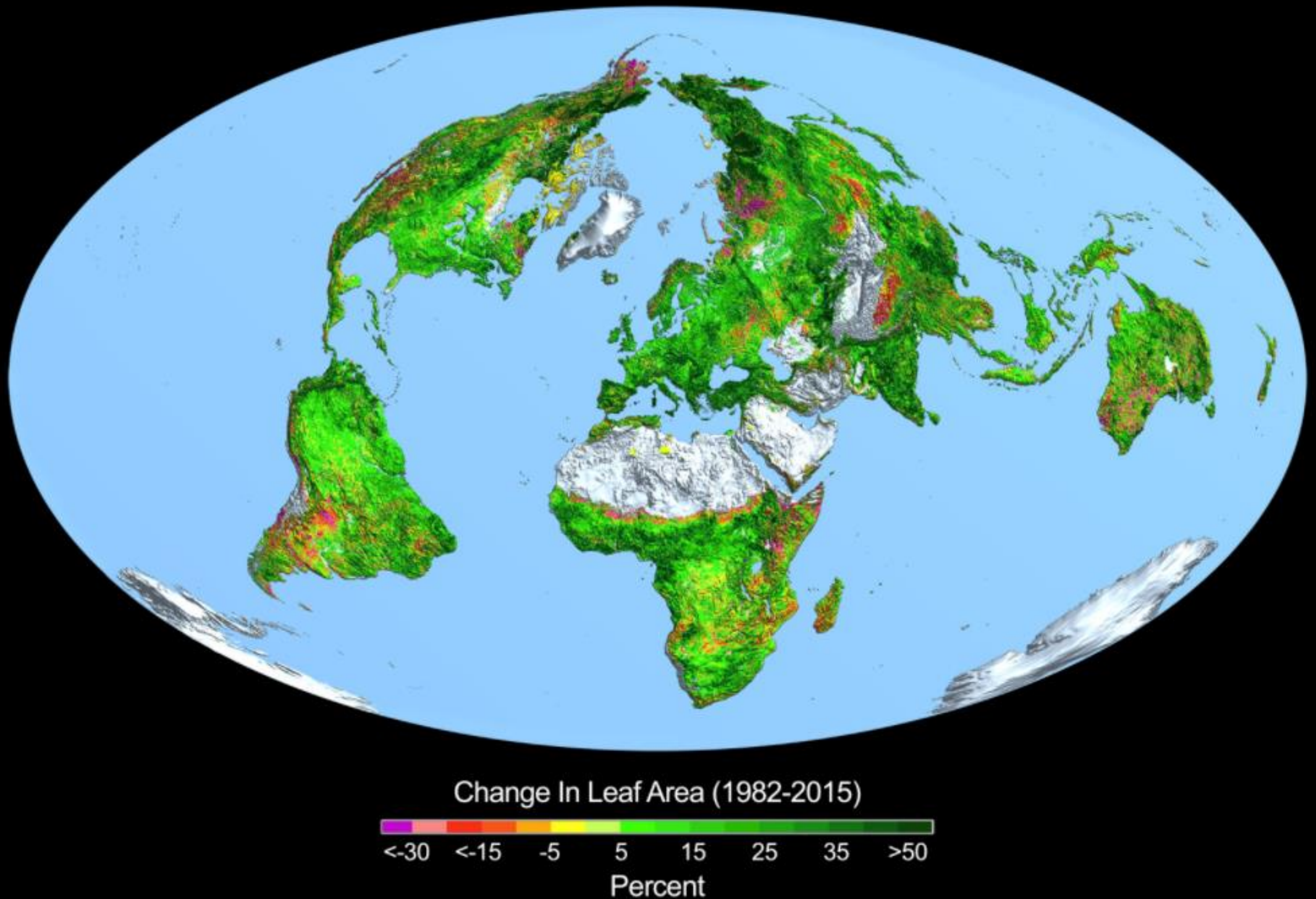


A satellite image of the Amazon watershed. It's area is 80% of the US lower 48. You can fly over it for five hours and see hardly any development.



NASA images of the Congo Basin.

A satellite image of the Congo Basin, the second largest rainforest after the Amazon. Let's work hard to protect endangered species!!



Using a NASA satellite An international team of 32 authors from 24 institutions in eight countries, published in 2015, clearly shows the positive effect of more CO₂ in the global atmosphere. The “Greening of the Earth” continues.

FAKE INVISIBLE CATASTROPHES AND THREATS OF DOOM

YOU WILL
PERISH
IN FLAMES

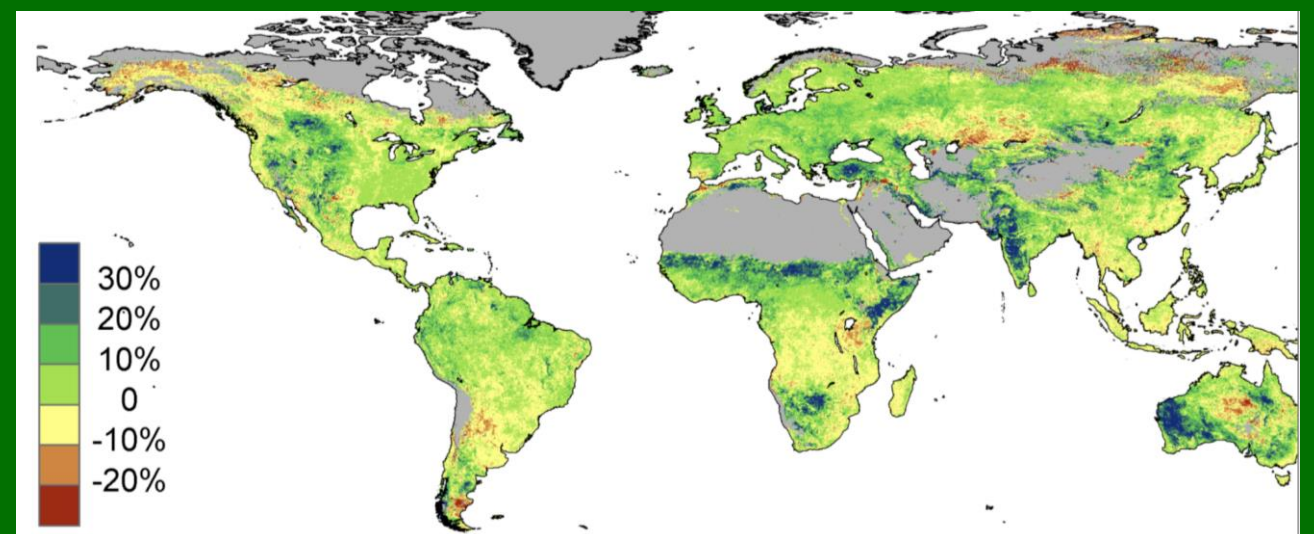


PATRICK MOORE

Patrick Moore, PhD
Ecosense Environmental
CO2 Coalition

Thanks for Listening!

IPLOCA
September 14, 2023



Greening of the Earth by CO2