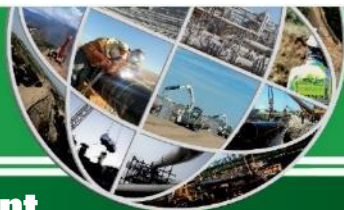


# LESSON LEARNT



PREPARED BY: Corporate QHSE Dept.

N° 07/2023 Date: July 2023

OBJECT EXCAVATION EARTH AND ROCKS

Excavation earth and rocks refers to the excavated soil resulting from following activities: **excavations in general** (excavation, foundations, trenches); **drilling, piling, consolidation; infrastructural works in general**; This material must be - if not identified as a by-product - managed, transported and disposed of as waste.



## SOIL MANAGEMENT

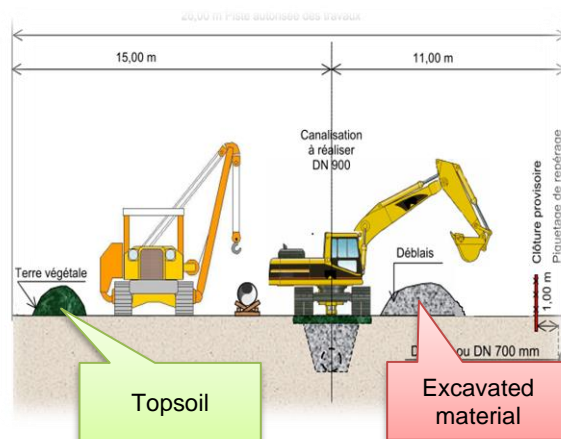
The general principles on which correct soil management on construction sites is based are mainly three:

1. valorize the upper (and possibly lower) layer of the removed Topsoil.
2. reduce as much as possible the occupied surfaces and the removal of soil (right of way, plants, removal work on excavated or worked surfaces).
3. rather than subsequently remediating soil that has not been treated correctly, prevention is easier and cheaper.

## OPERATING INSTRUCTIONS

It is recommended to:

- Do not move excavated earth and rocks outside the construction site without the necessary authorization.
- Make sure that the excavated earth and rocks are not contaminated by hazardous substances and/or waste, and if they are, it must be treated as waste.
- Check whether it is possible to reuse them in situ by contacting the project HSE department.
- Carry out excavation activities exclusively in the right of way and/or authorized areas.
- Carry out storage in piles in specifically dedicated storage areas at the production site.
- Avoid transit of construction vehicles and heavy equipment over the deposited material.
- prevent the soil deposit from expanding/sliding onto land not covered by the activity.
- Respect the maximum height of the storage pile.



## POSSIBLE CONSEQUENCES:

The possible consequences due to incorrect management of excavated earth and rocks are the following:

- Possible environmental damage.
- Administrative and/or Criminal Sanctions by the relevant Bodies.
- Legal disputes with private individuals and public institutions.
- Customer complaints.
- Damage to the company's public image.

## RECEPTION BY THE PROJECT

WHICH ACTIONS IDENTIFIED TO BE IMPLEMENTED IN THE PROJECT:

Project Manager:

Signature:

HSE Project Manager:

Signature: