



Near miss – HiPo – 17/11/12

Brief description:

- 11 th of November / 11h30
- Oxy-acetylene torch has been used for cutting. Flashback in the torch, resulting in a burst hose
- No injuries to personnel



Near miss – HiPo – 17/11/12

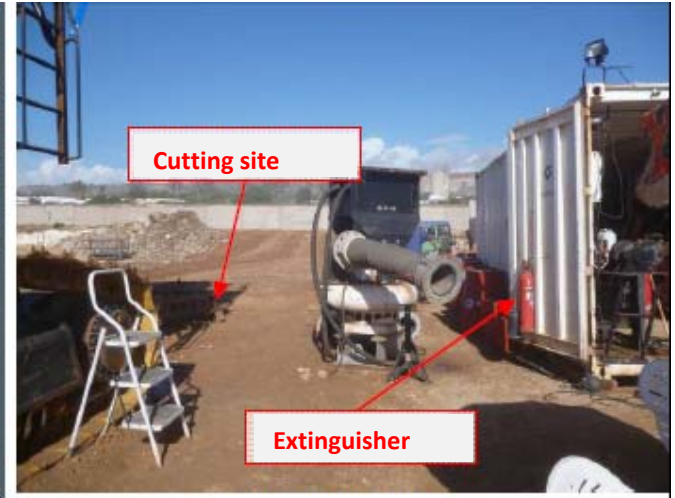
Event chronology:

- Working on the track shoe assembly
- Cutting using oxy-acetylene torch
- Flashback occurs
- Flashback stopped by valve at bottle side
- Burned flexible hose exploded
- Closing of the valve at acetylene bottle side
- Fire extinguished

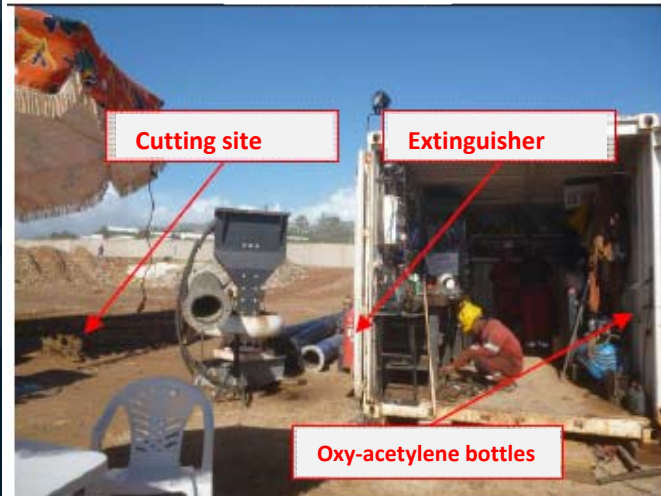
Near miss – HiPo – 17/11/12



Incident location



Incident location



Incident location



Storage location – Workshop location



Near miss – HiPo – 17/11/12

Potential consequences:

- Fire could have progressed through the hose into the cylinder, resulting in deadly cylinder explosion
- Inflammable products stored in the workshop location. Explosion of the workshop itself.



Near miss – HiPo – 17/11/12

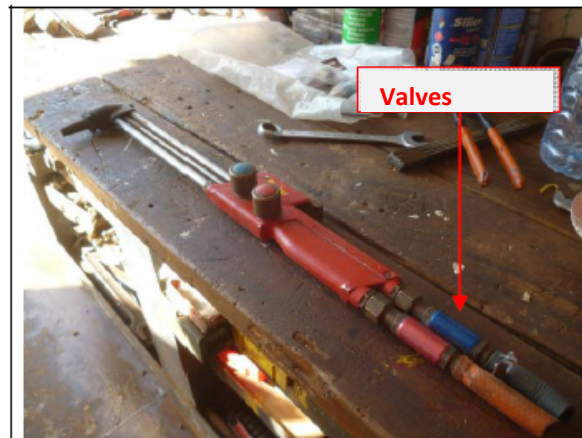
Immediate actions taken after the event:

- Closing of both cylinders: oxy-acetylene
- Disconnection of the hose & torch
- Cutting off the hose & torch
- Removal of all inflammable products from workshop location & organisation of the storage area away from the working area

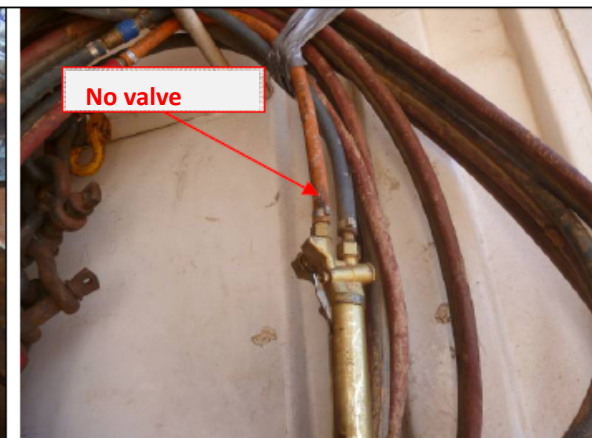
Near miss – HiPo – 17/11/12

Investigation findings:

- Torch was replaced during the operator's absence
- New torch was installed without any valves at torch side.



Old torch with valves



New torch without valves



Near miss – HiPo – 17/11/12

Investigation findings:

- No safety induction
- No toolbox talk performed
- No visual check / inspection of the equipment performed prior to the operation
- No specific training performed on torch use
- Fire extinguisher at proximity but not ready for use



Near miss – HiPo – 17/11/12

Corrective actions:

- Sensibilise & train personnel about risks using oxy acetylene torch & the need to use valves & about storage of inflammable products
- Fire extinguisher to be set ready for use
- Valves to be added on all hoses of all sites & workshops & projects
- Do not store dangerous product inside the workshop container but in a dedicated area
- Sensibilise people about the importance of visual inspection of the equipment prior use
- Add to the inspection check list of the periodic safety tour: « check valves are present on welding torchs & cylinders »