



Information – SANITARY MEASURES TO APPLY – MITRY-MORY

Important :

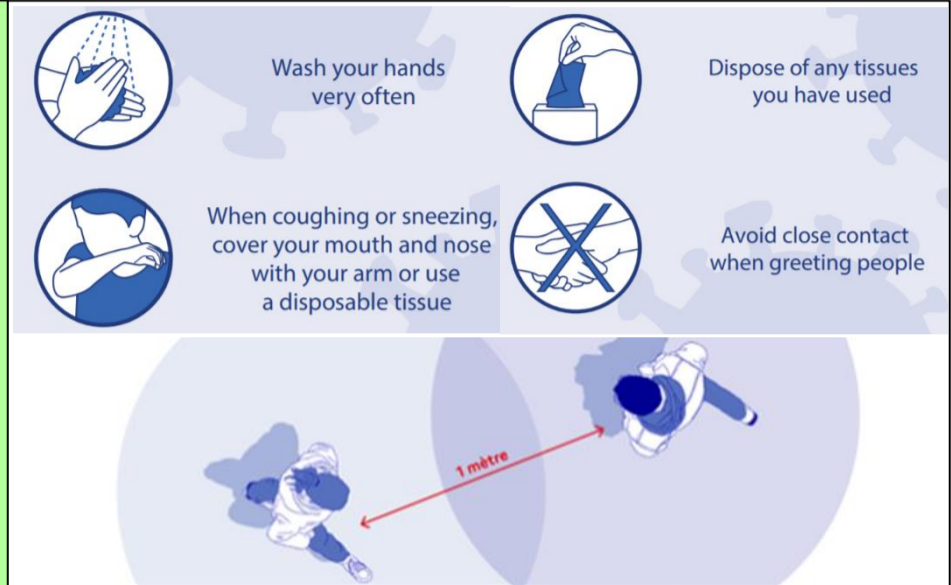
- Covid-19 virus is transmitted by inhalation of droplets emitted, by a person carrying the virus,
- It can also be transmitted by contact of contaminated hands to the mucous membranes (nose, mouth, eyes).
- Covid-19 virus can survive for several hours on a dry surface.

Sanitary measures to apply :

- Protection against postlets / droplets from any other person thanks to :
 - **1 M OF DISTANCE MINIMUM ON THE ENTIRE SITE**
 - **Wearing respiratory / eye protection**
- Washing your hands as often as possible.

Sanitary practices :

- No physical contact between people,
- Do not put your hands on your face without being washed (water + soap or hydroalcoholic gel)



Actions to be implemented :

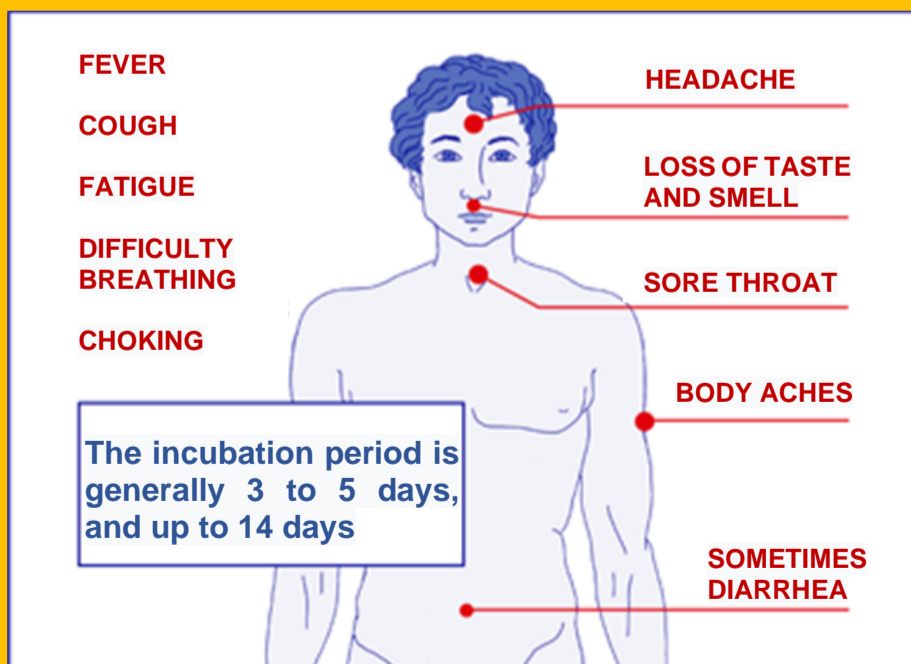
- **Use Teams when possible** rather than attending a meeting or traveling
- **Extension of times** to use Changing rooms / Refectory
- **Access doors kept open** if possible.
- **Regular cleaning of surfaces** by each employee
- **Limit exchanges of objects** (files, pens, etc.)
- **Use empty desks** if necessary
- **Temporary authorization to have lunch at his office**
- **Carpooling not recommended.** 1m distance if applied
- **Wash hands before and after contact with common surfaces.**

Available:

- **Wipes, hydro-alcoholic gels, sprays, masks and gloves:** ask your manager / Serimax contact



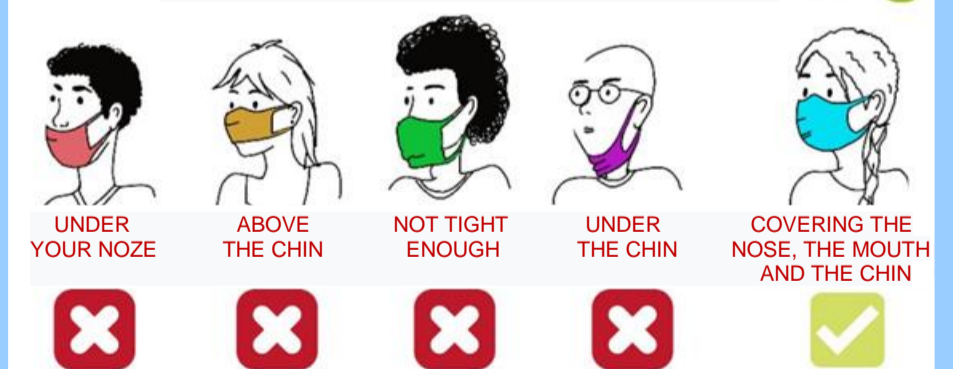
In case of symptoms:



- Meet at **office n°68 (Extension 1st floor)**
- **Contact a First Aider** or HSE department **by phone.**
- **Stay in this office.** A First Aider will take care of you.

COVID19

How to wear the textile mask ?



When should I change my mask?

Disposable masks (surgical / FFP2 / FFP3):

- Every 3 hours, if continual use
- In case of contamination, projection
- If it was touched / lowered at the neck
- As soon as it is wet.

Tissue Masks:

- Wash at minimum 60 °C / 30 min / No drying in the open air